

THROUGH THE CLOUDS

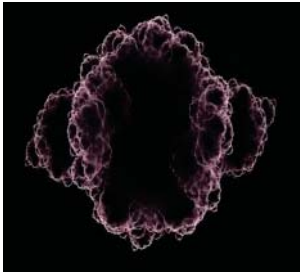
A space which explores the intersection of architecture, art, and public engagement through a multi-sensory experience



MODEL PHOTO

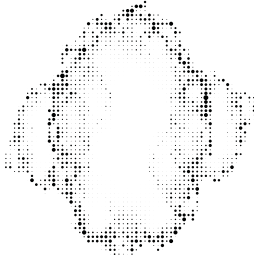
CONTENT BASED DESIGN_CLOUD

IMAGE CONTEXT

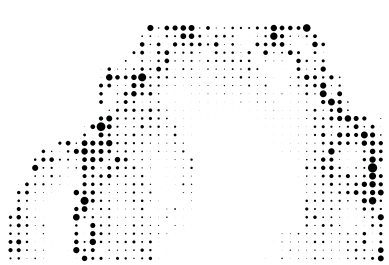


FRactal Cloud

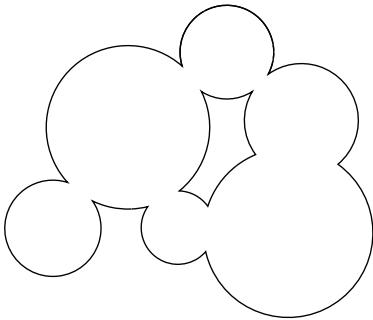
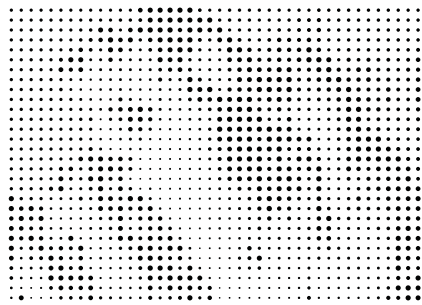
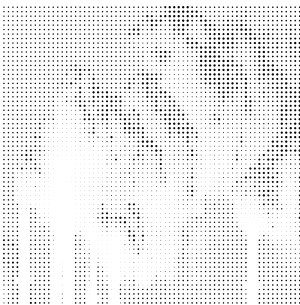
IMAGE ABSTRACT



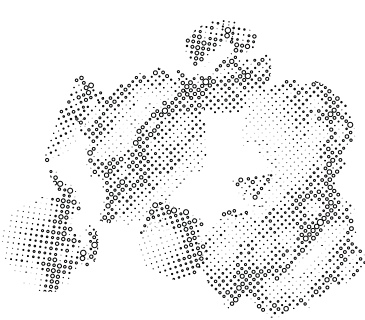
ABSTRACT ZOOM



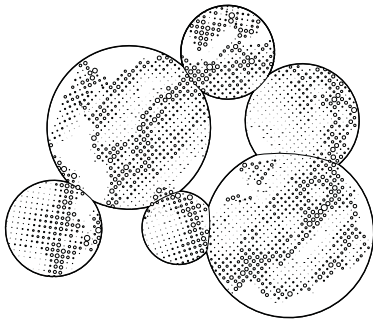
INDUSTRIAL CLOUD



CANOPY OUTLINE



ABSTRACTED PATTERN

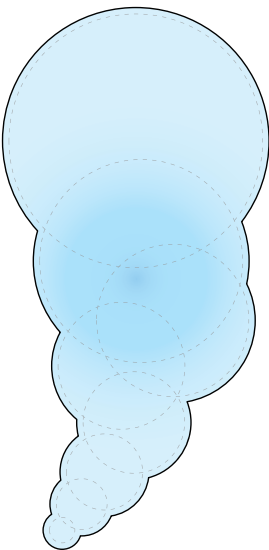


PATTERN IMPLEMENTED

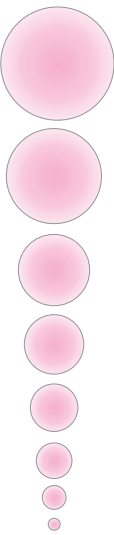


The complexity derives from the experiential quality and a formal language. The canopy above the park casts an ephemoral image that changes throughout the day creating a shadow theater.

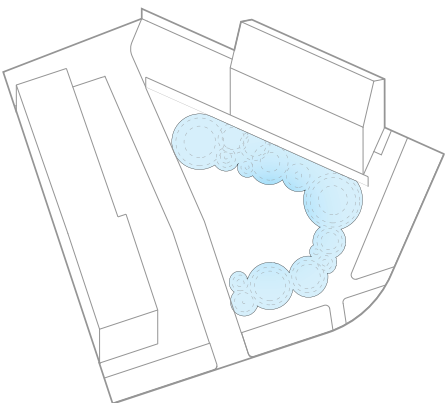
PROGRAM DIAGRAMS_CLOUD



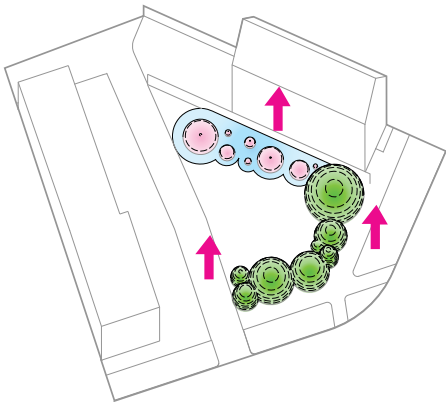
CLOUD GEOMETRY



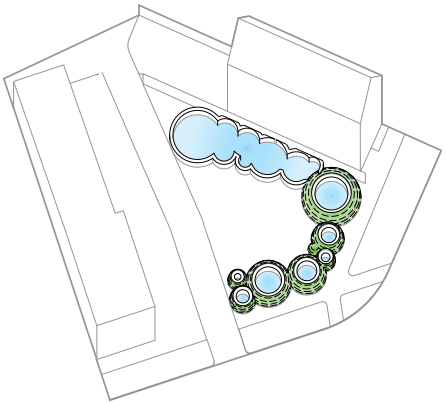
CIRCLE ZONES



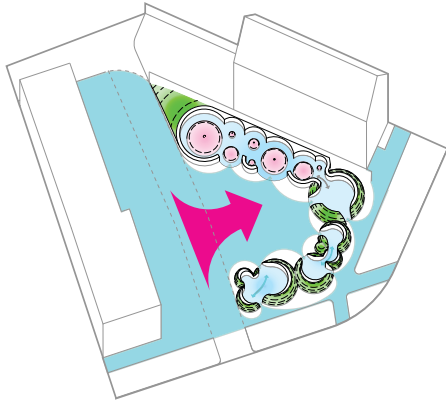
CLOUD IN SITE



EXTRUDE FORM



OFFSET INTERIOR



SUBTRACT



SEATING

PLAYSCAPE/TOPOGRAPHY

PLAZA/FREE ACTIVITY

GARDENSCAPE

CANOPY



PARK RENDERS



Responding to the history and the new developing context of the South Chicago neighborhood, Cloud Park aspires to be a rebranding model for the area. Attracting people of all ages and having the ability to evolve with the changing seasons and activities that will take place.



PARK RENDERS



LOOKING NORTH



LOOKING SOUTH

THROUGH THE CLOUDS

HENRY RINGLEVER & JONATHAN MEDINA



MODEL PHOTO