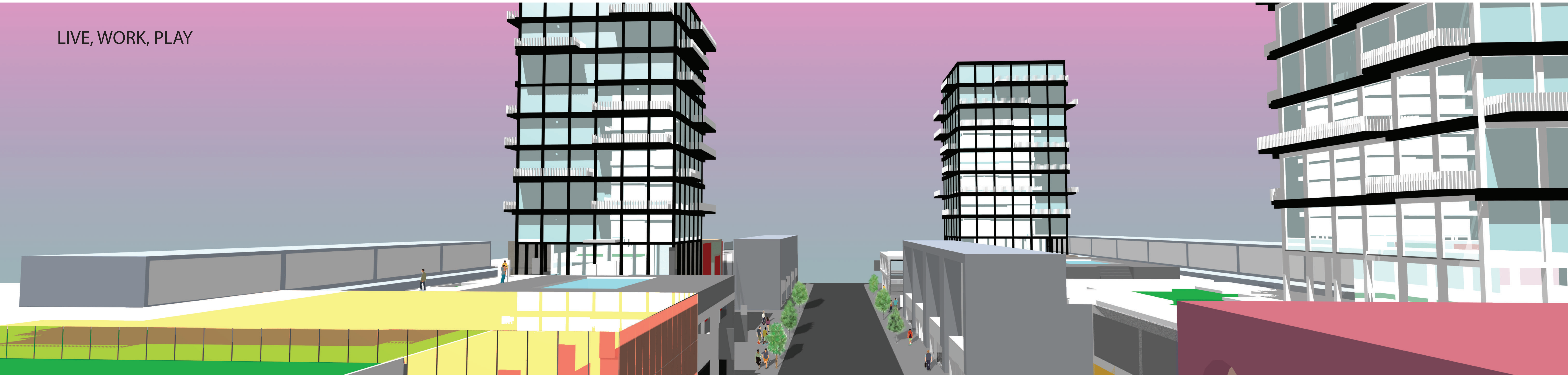
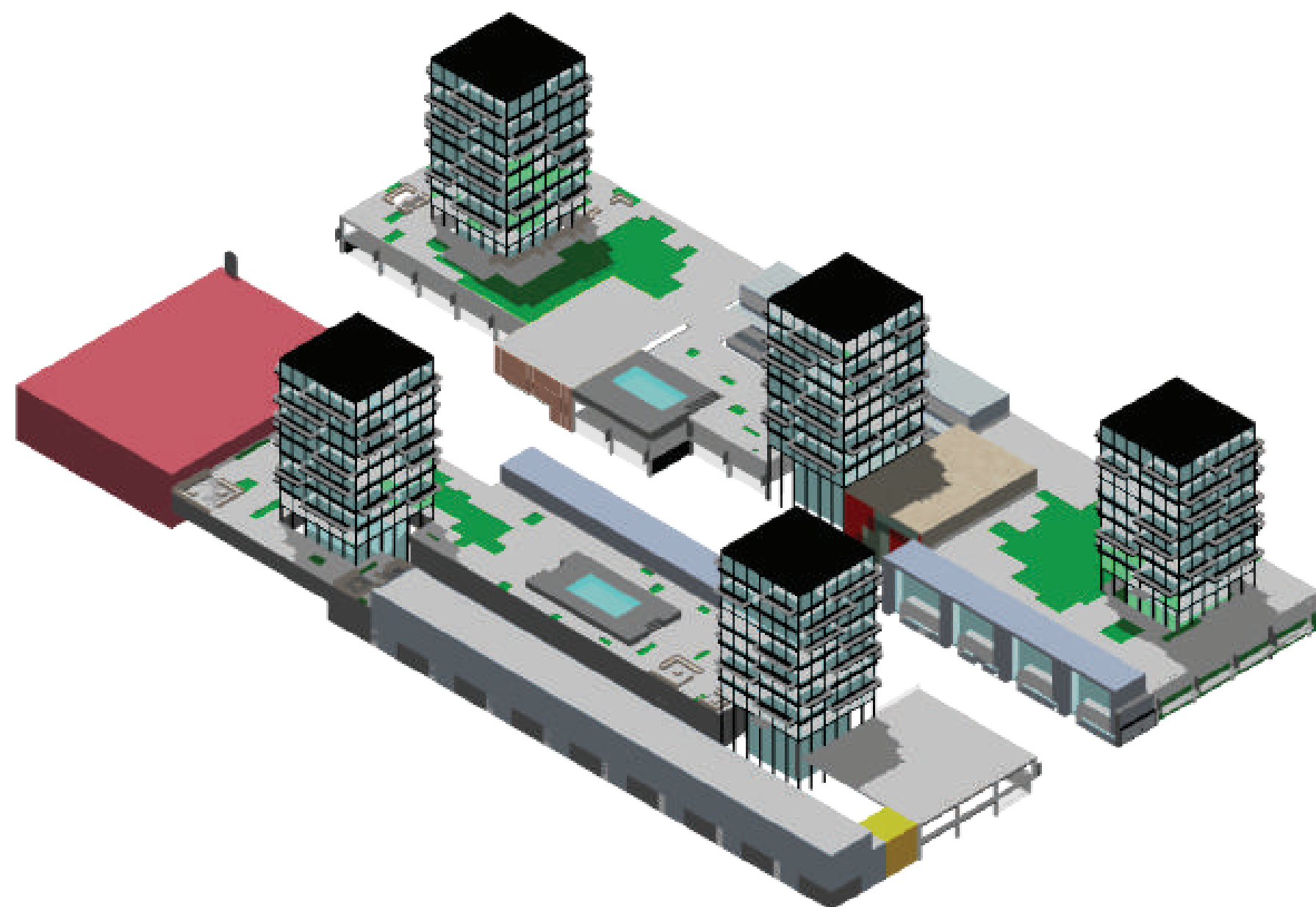
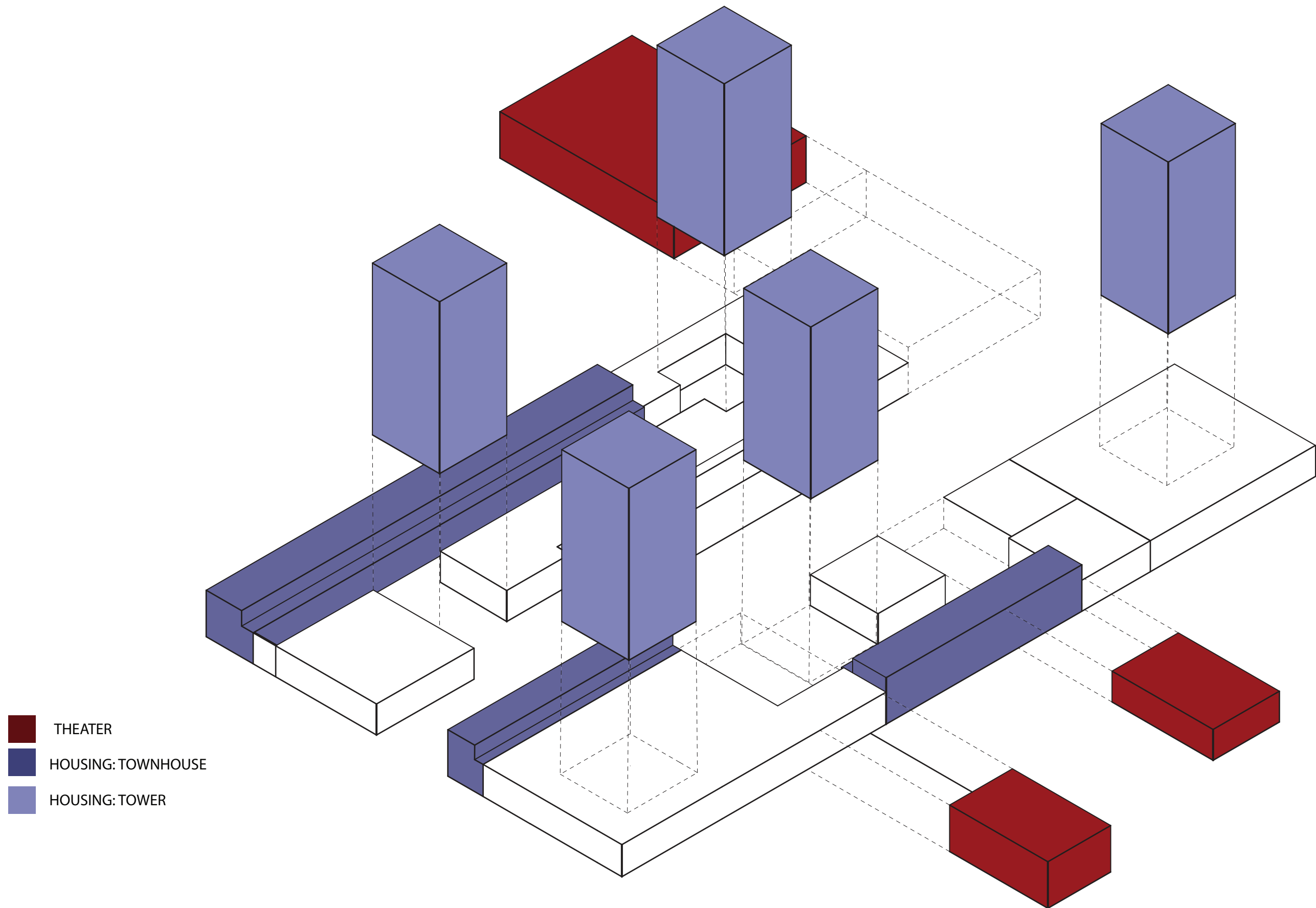
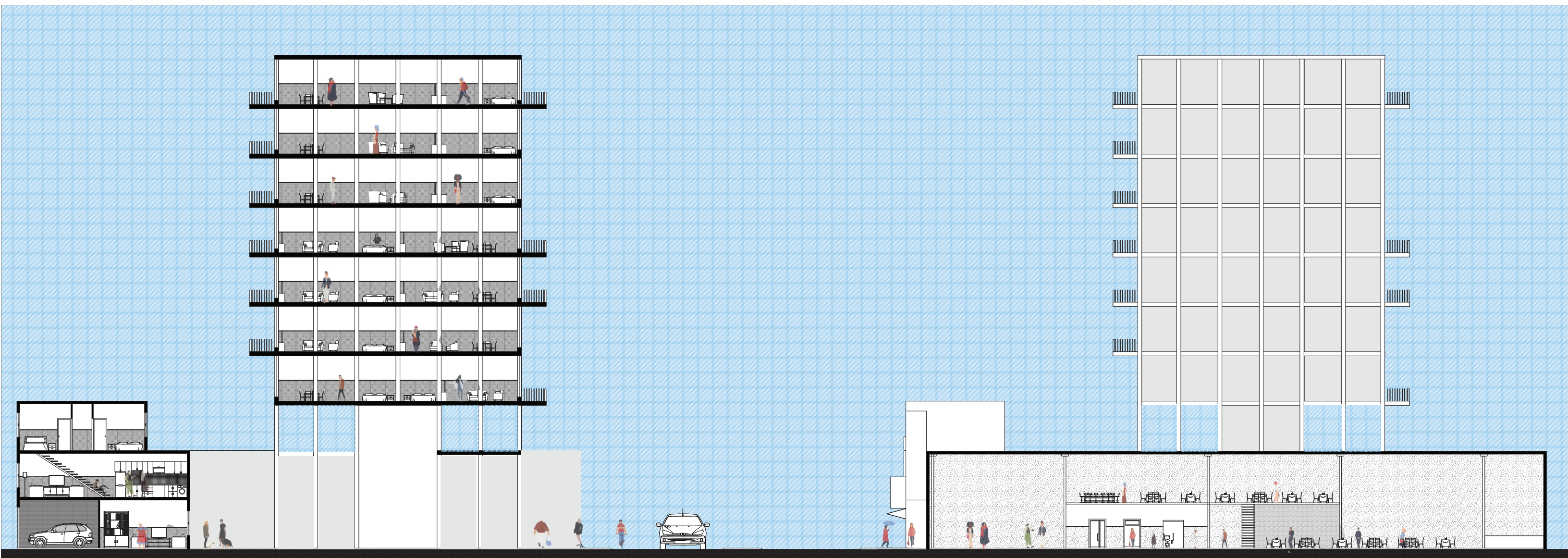


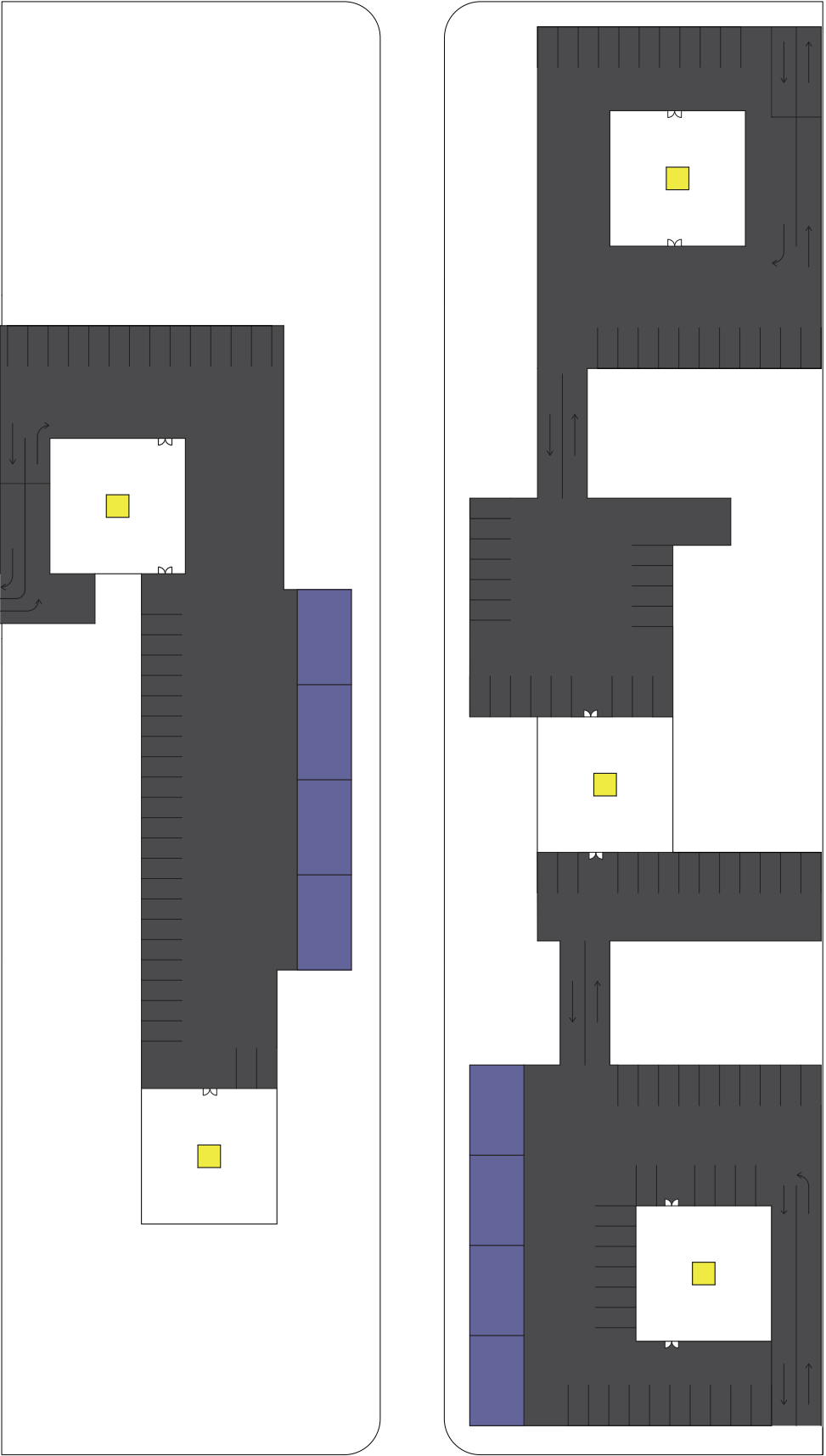
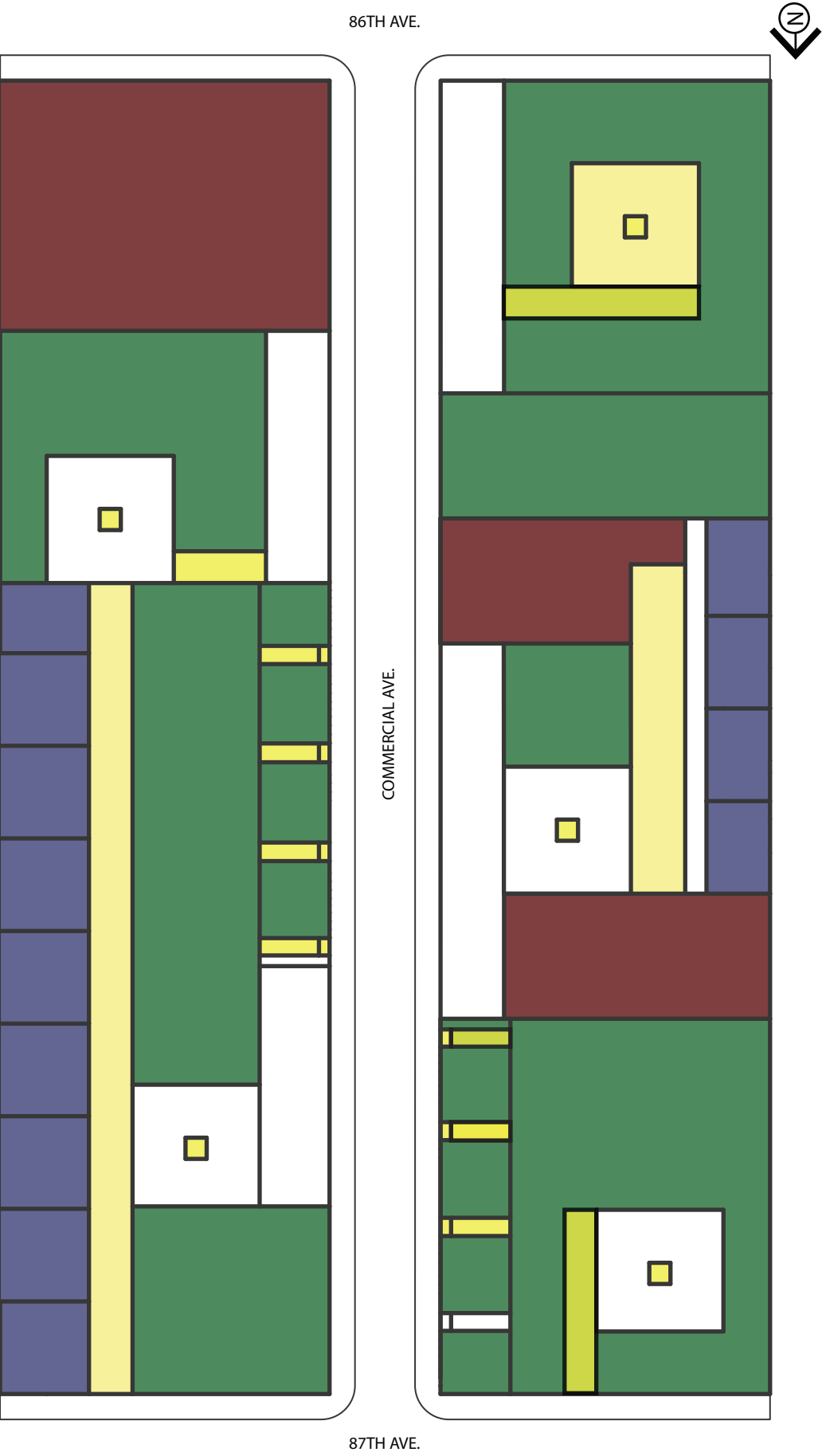
LIVE, WORK, PLAY



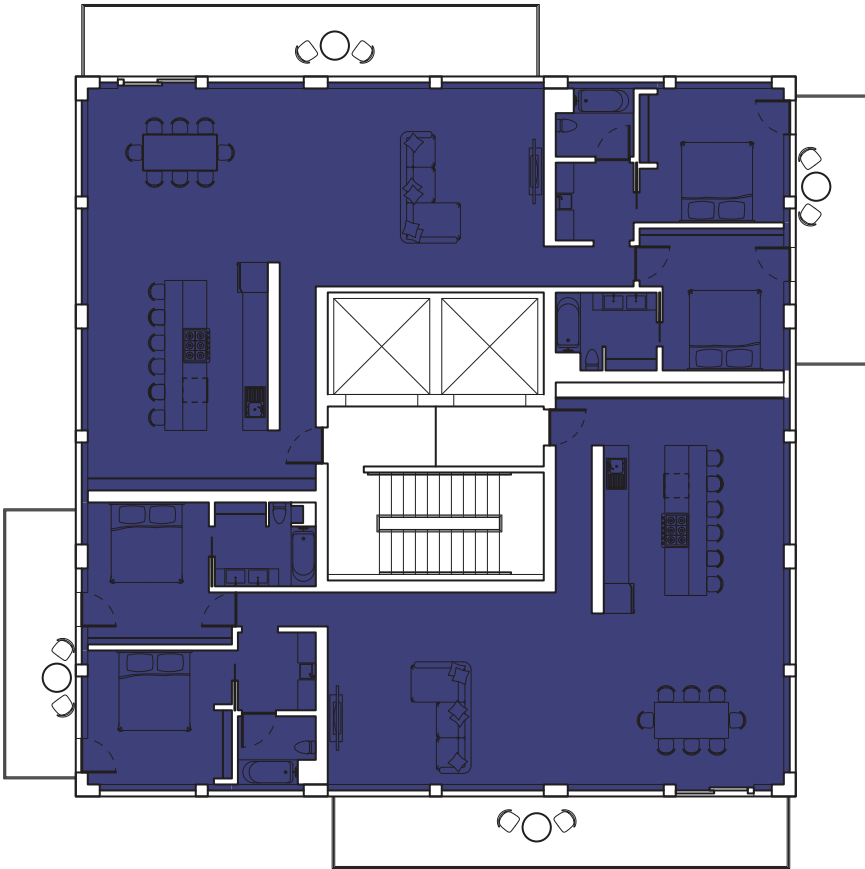
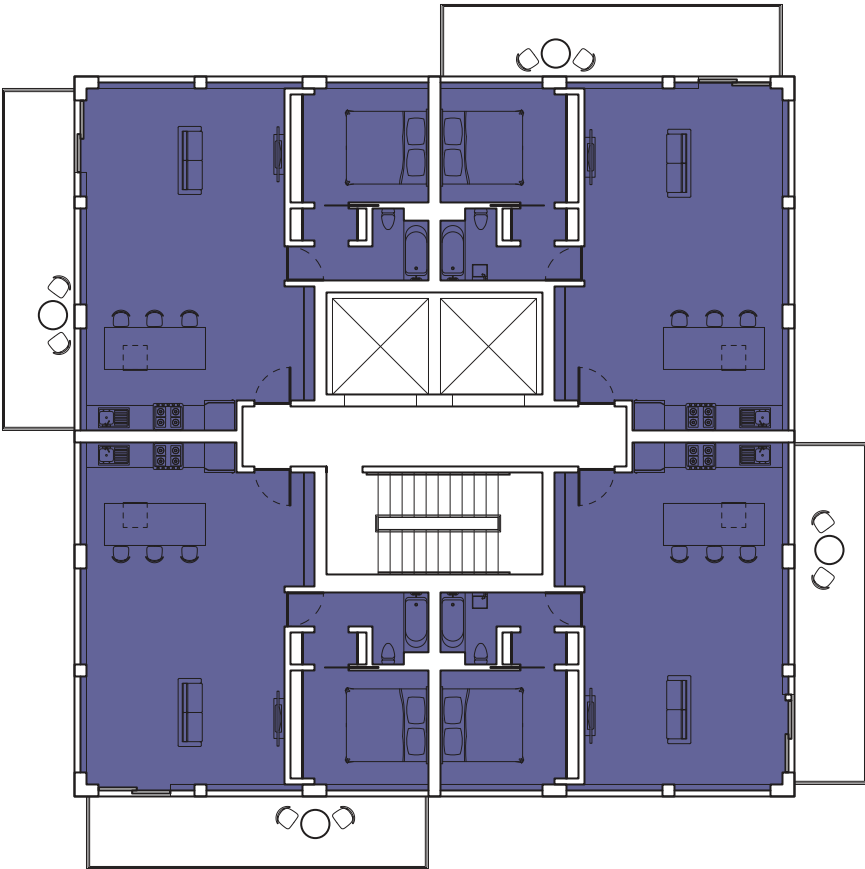
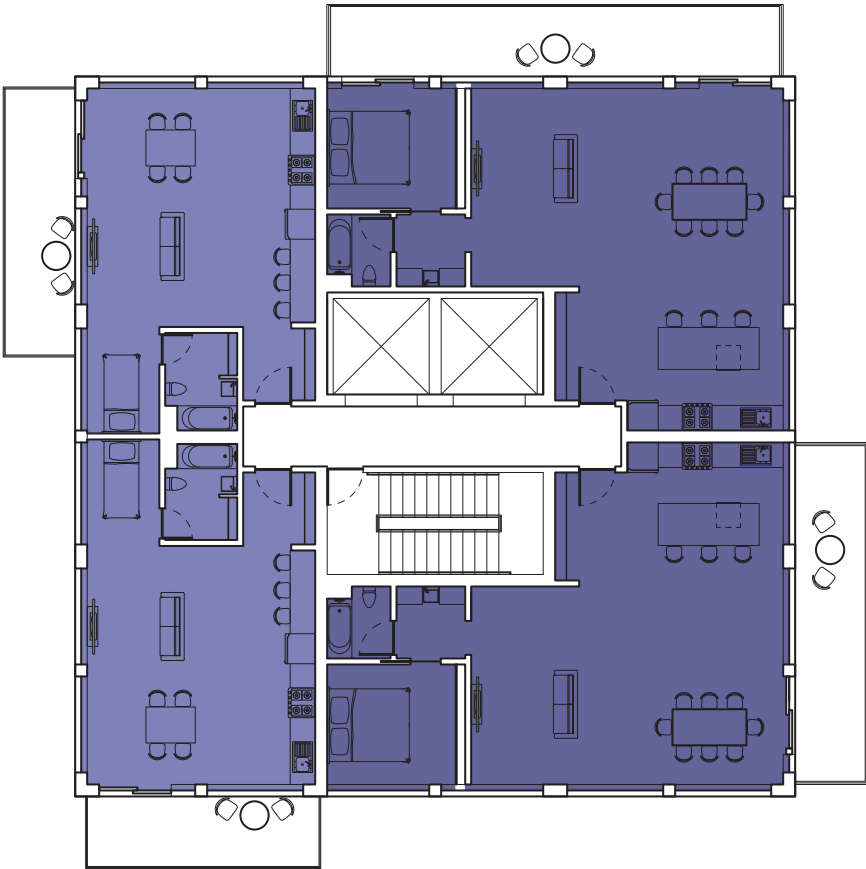
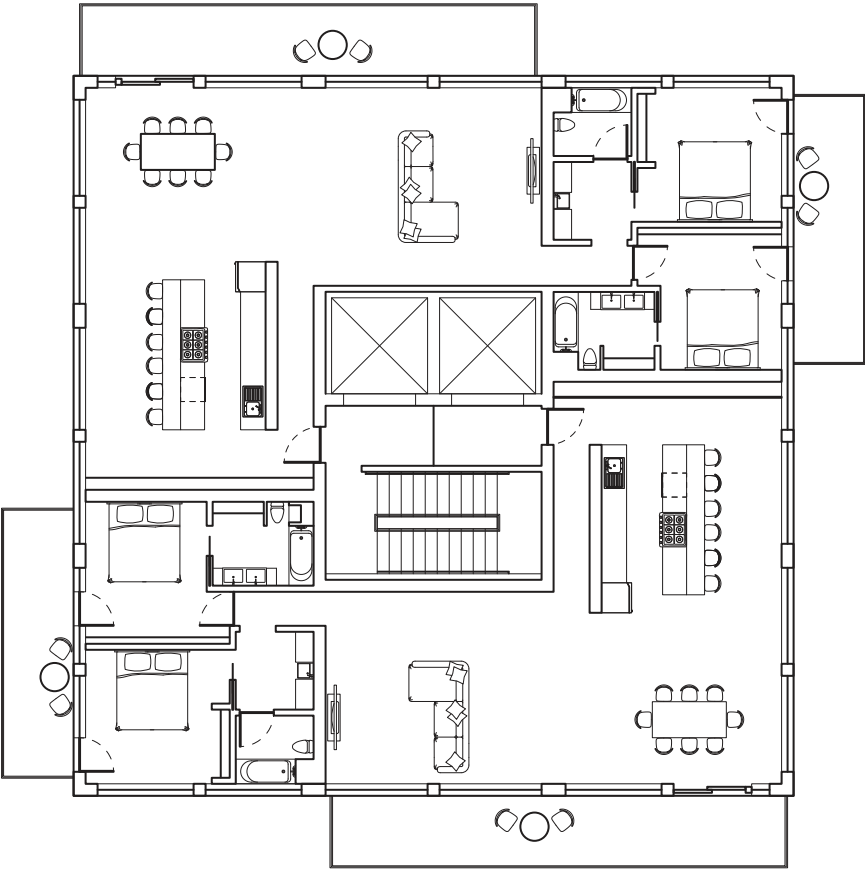
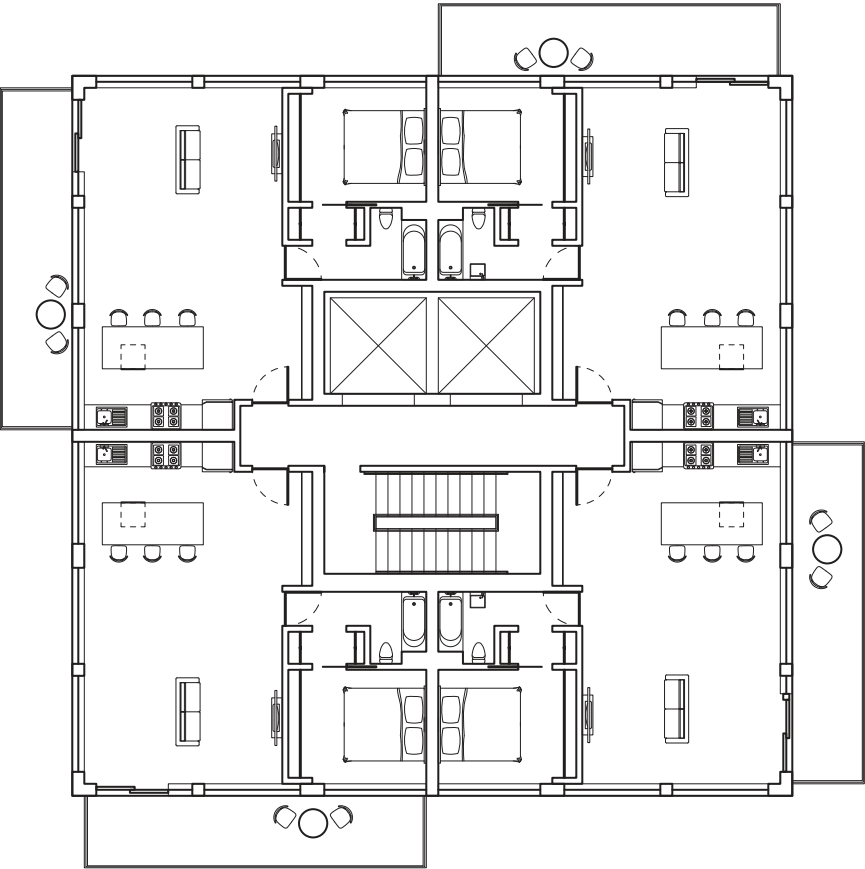
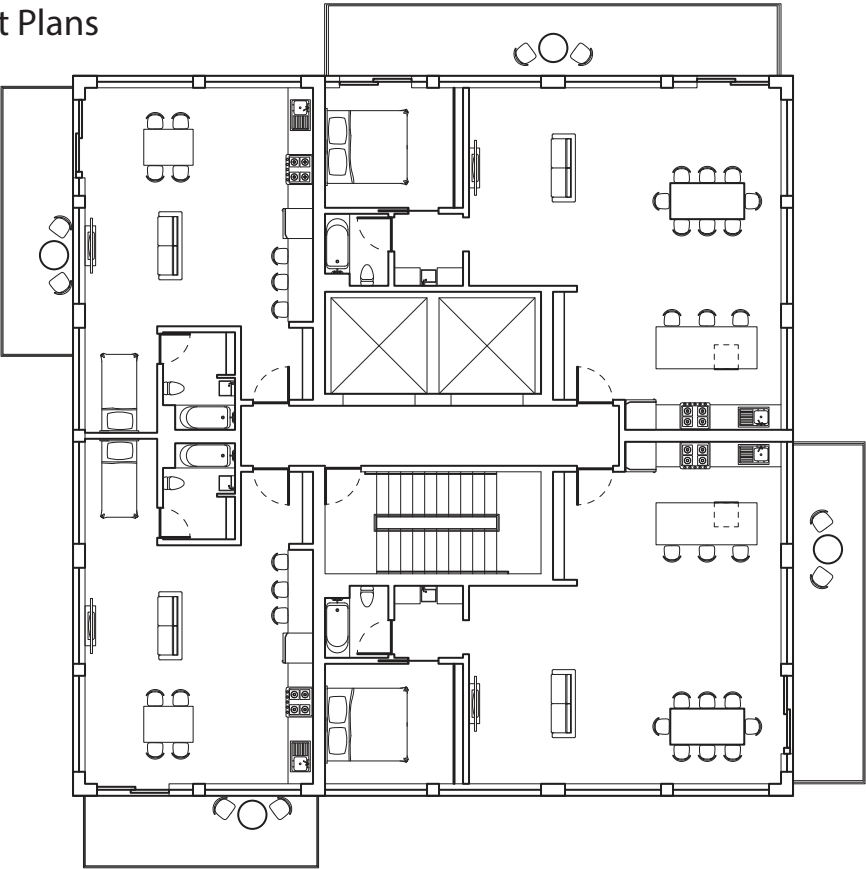






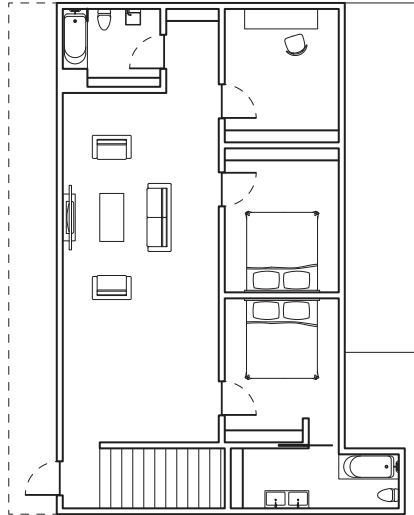


Tower Unit Plans

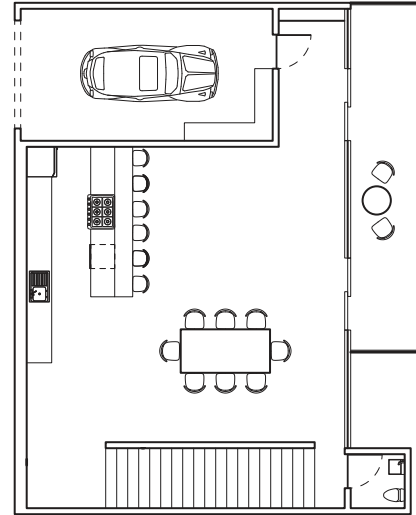


- Studio
- 1 bedroom
- 2 bedroom

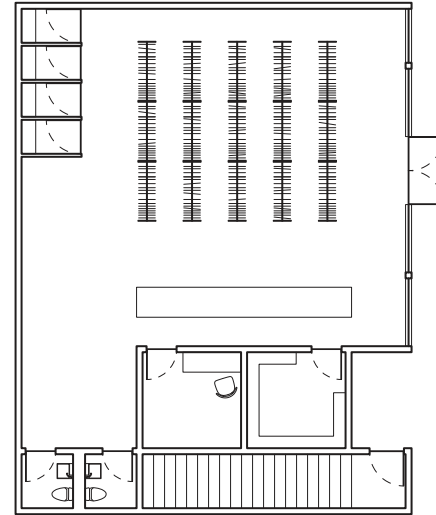
3rd Floor



2nd Floor

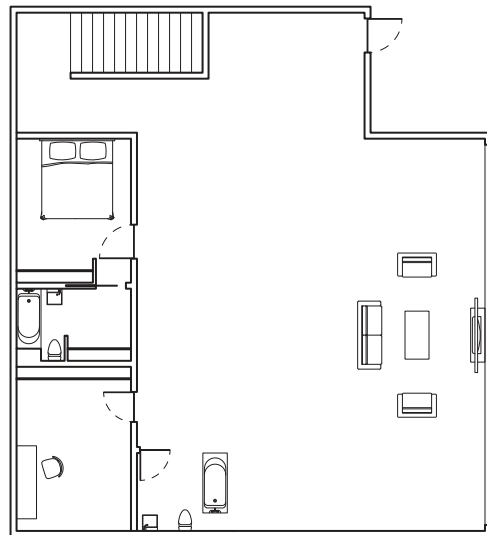


Ground Floor

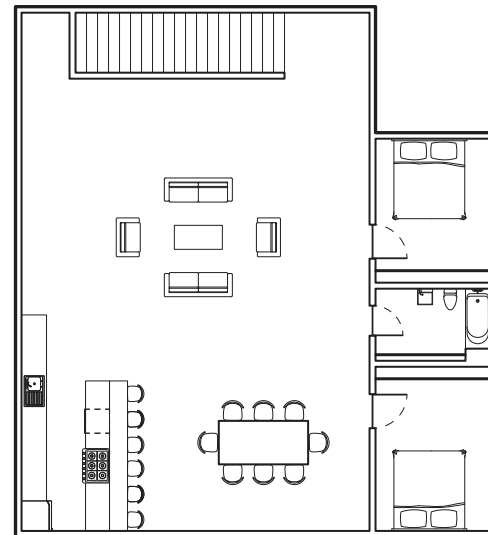


Live Work (Street side)

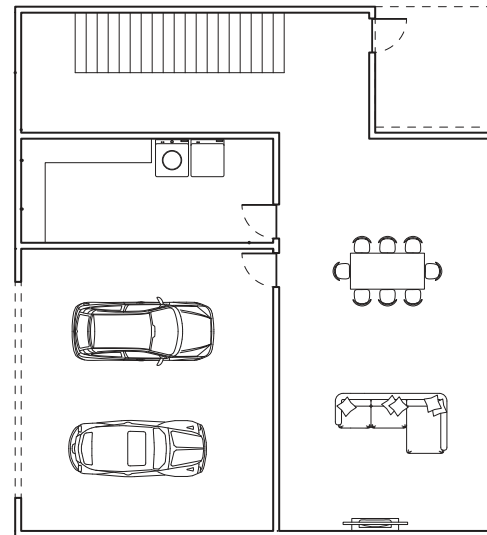
3rd Floor



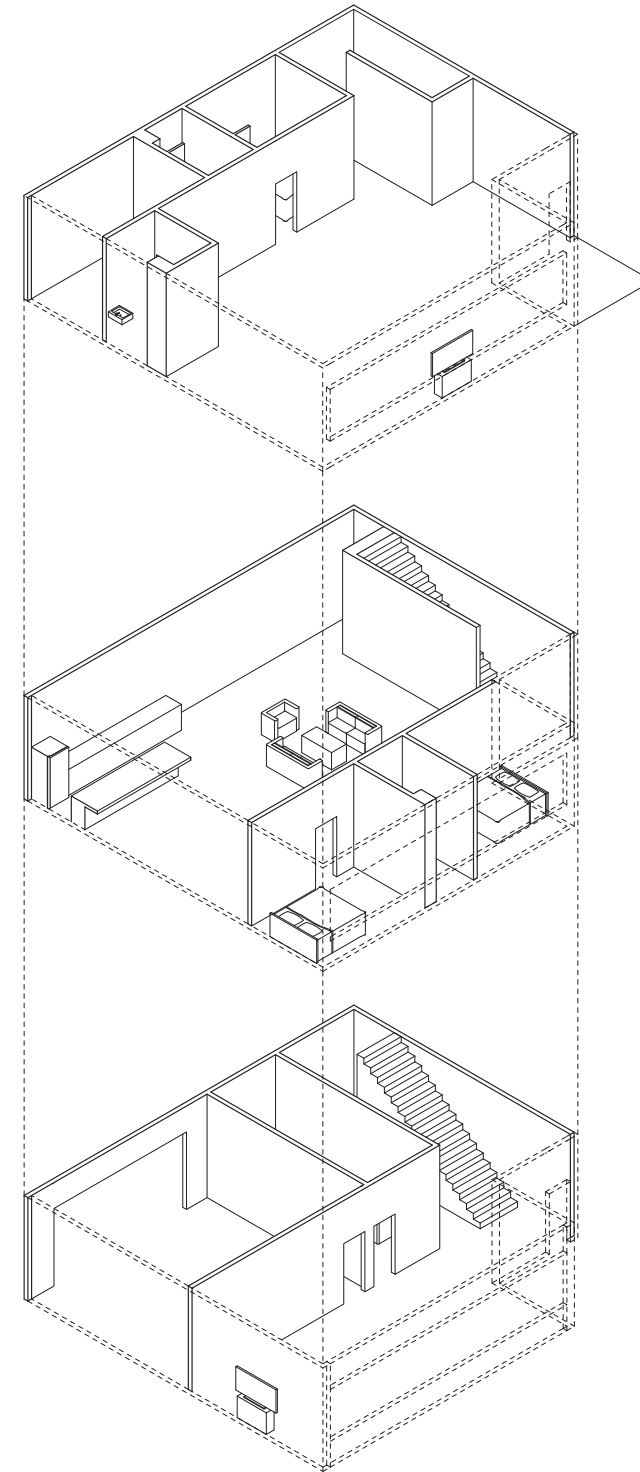
2nd Floor



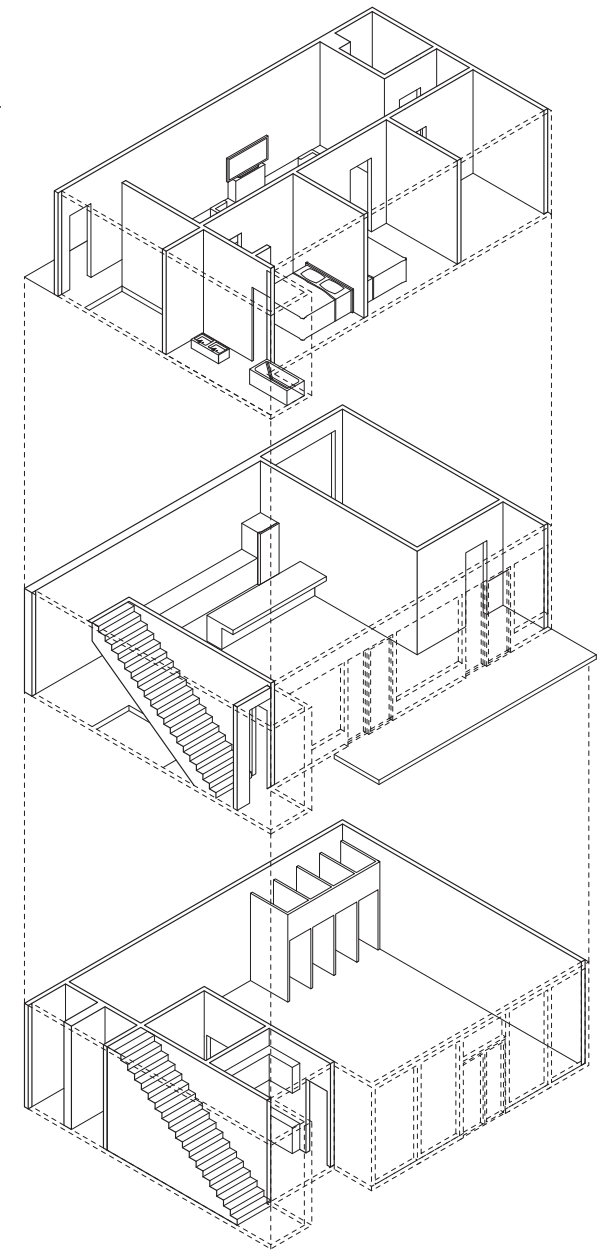
Ground Floor



Town Houses (Alley side)

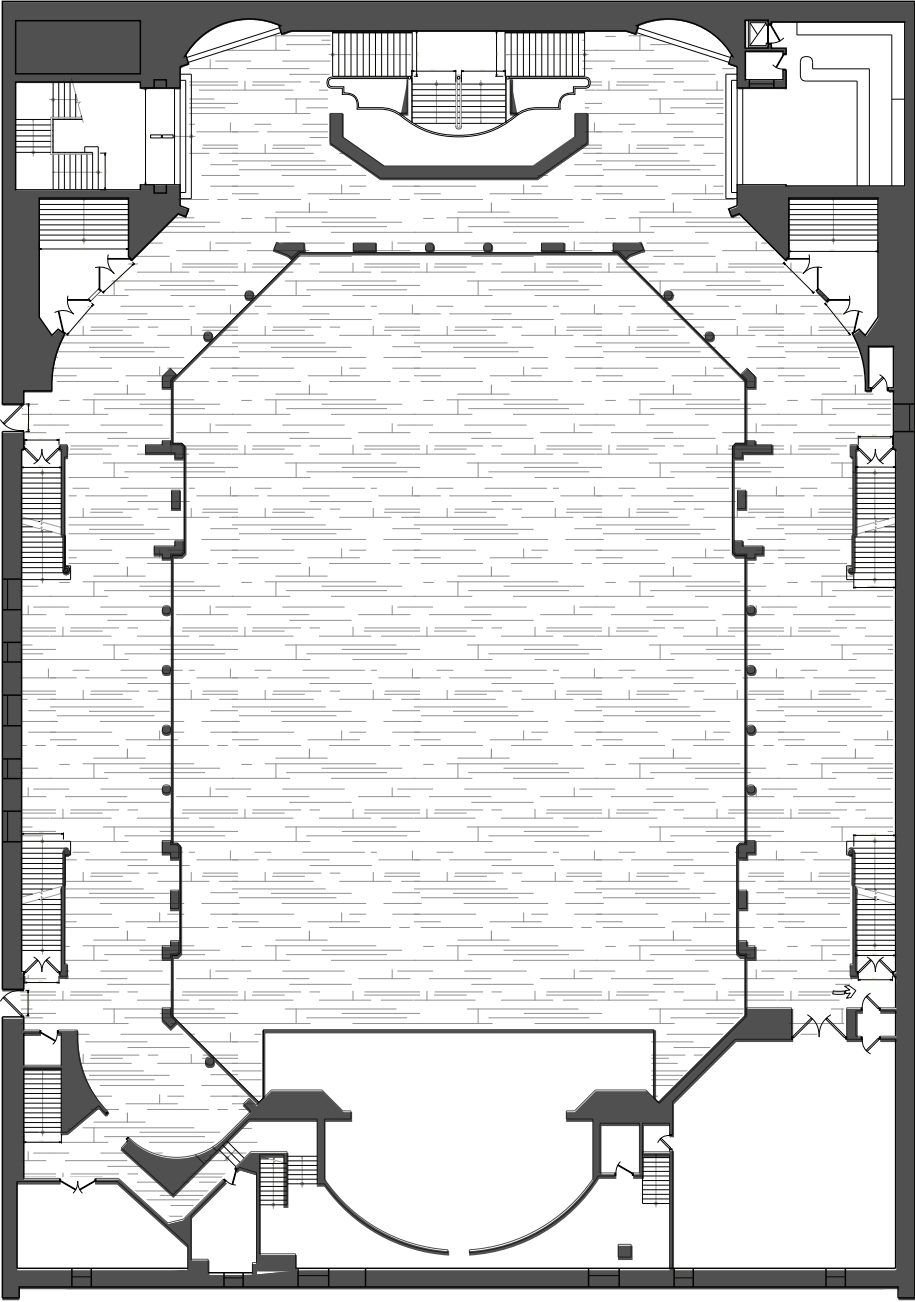


Town Houses (Alley side)



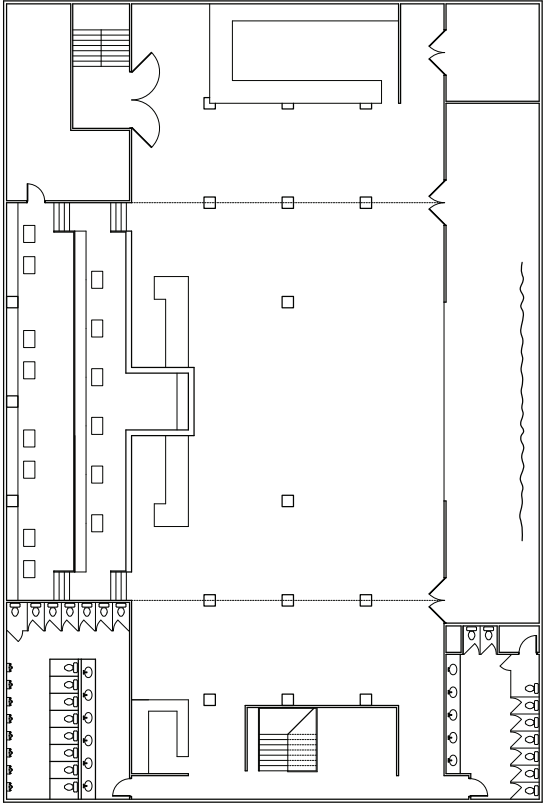
Live Work (Street side)

Theatre Comparisons



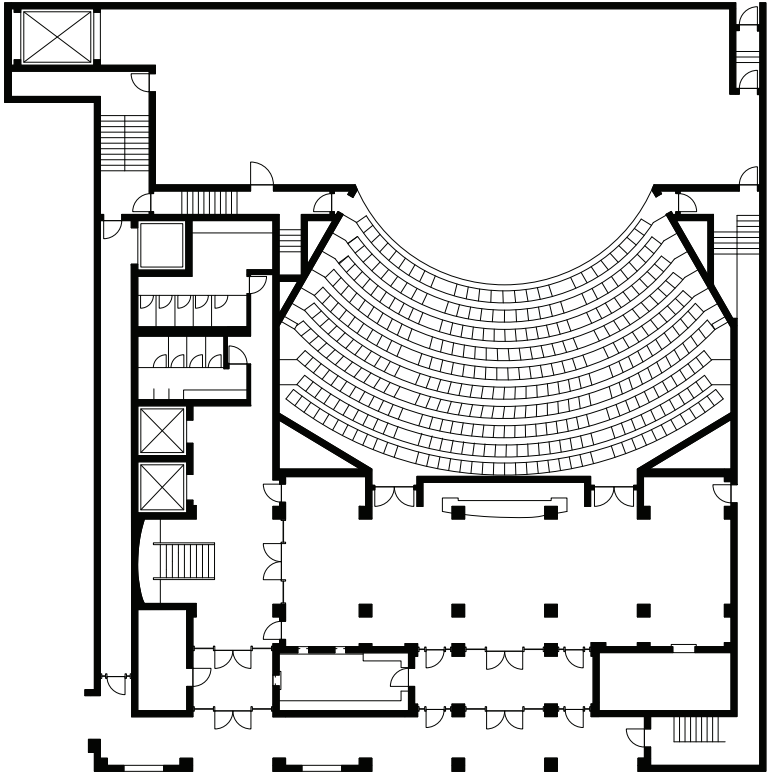
Aragon Ballroom

5,000 people capacity



Concord Music Hall

1,500 people capacity



Stephenwolf Theatre

800 people capacity





