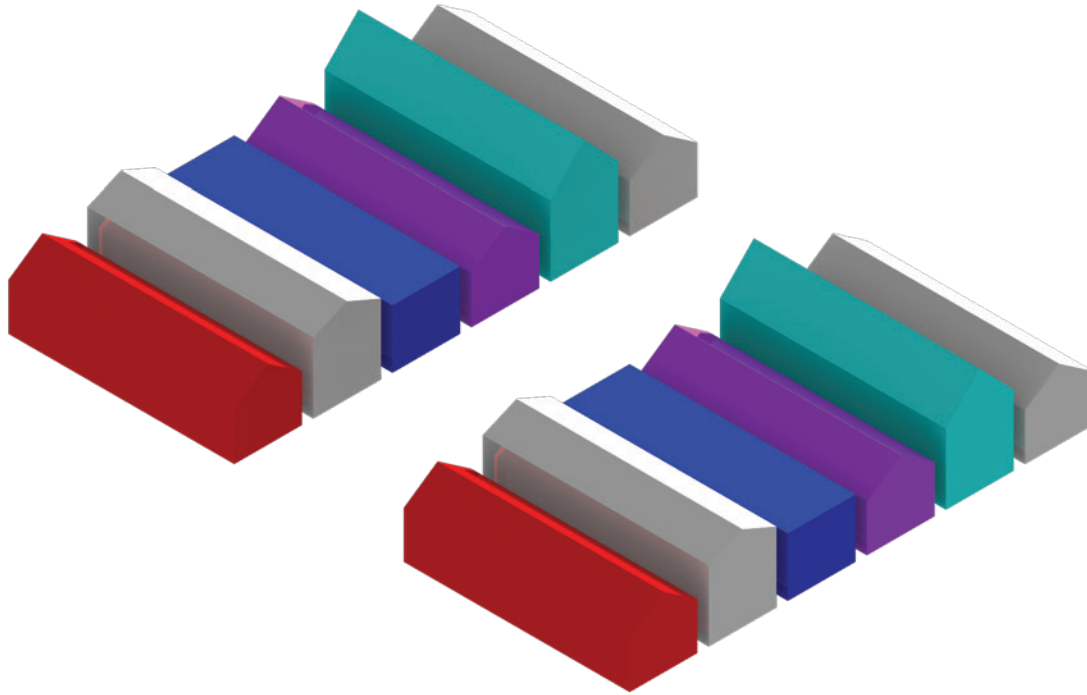


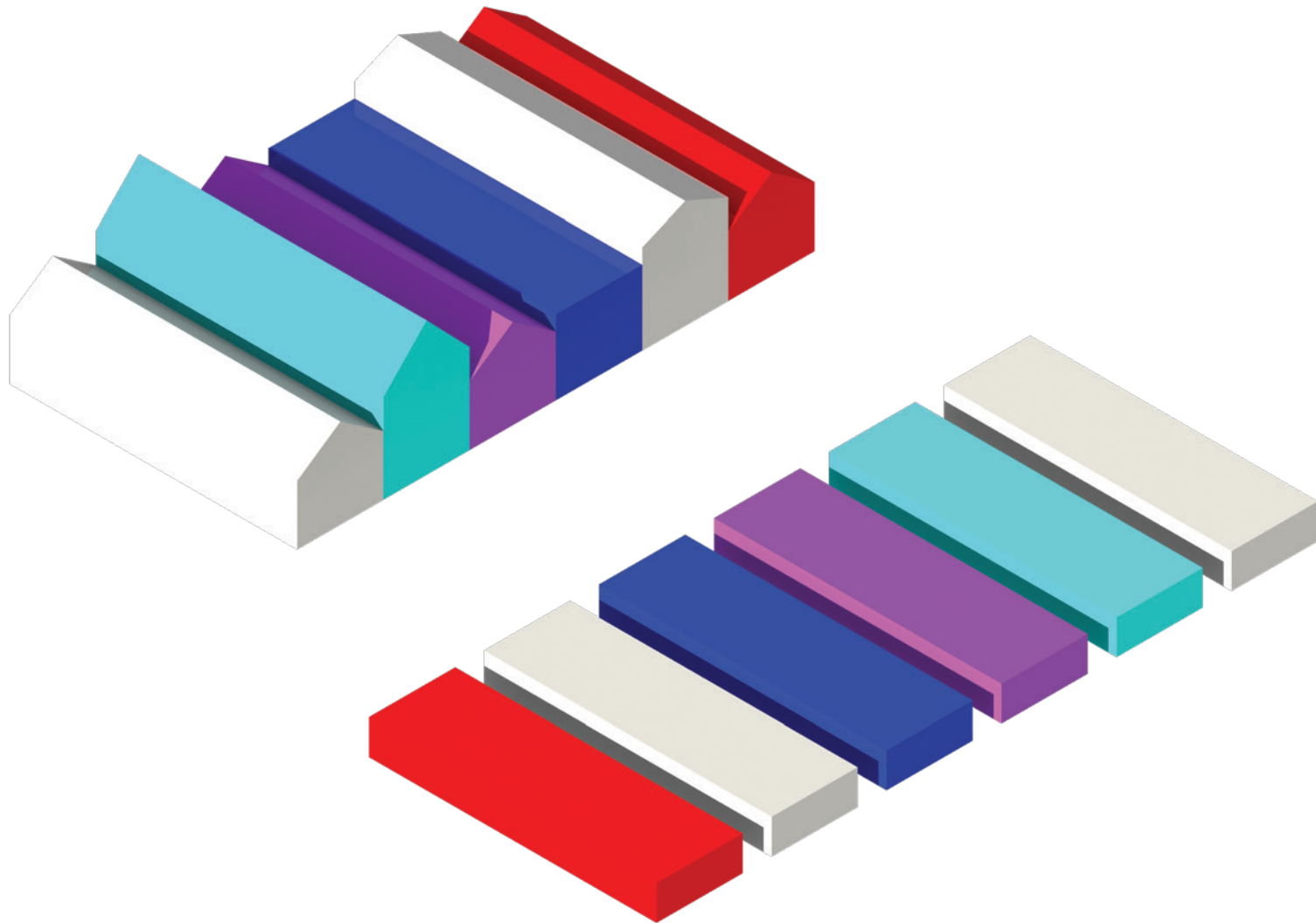
THE STEPPES

AT COMMERCIAL AVENUE

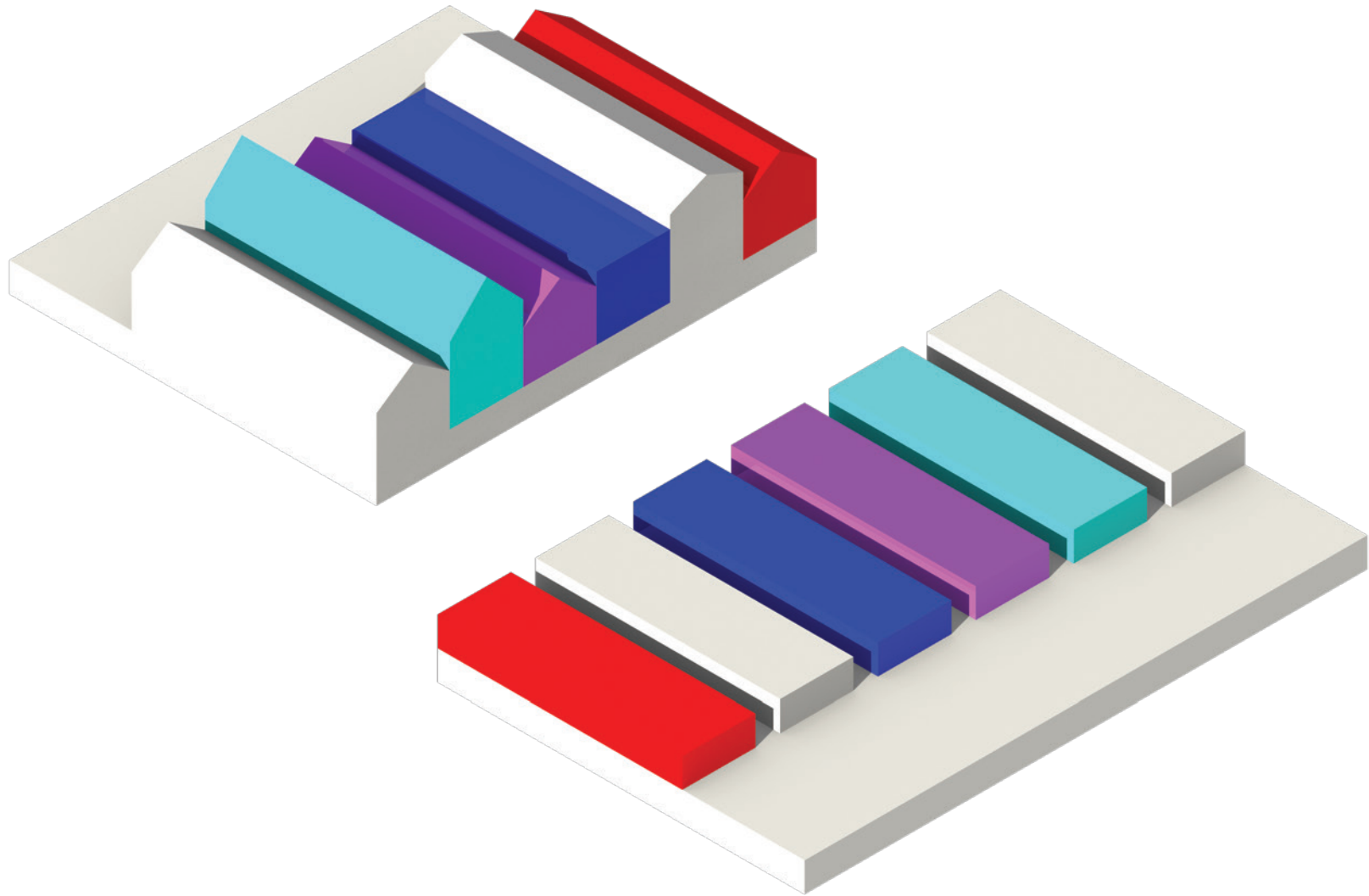
LUKE T. RUMAGE PATRYK A. KADZIOLA
JARYON S. D. BANKS RICARDO A. POGGI



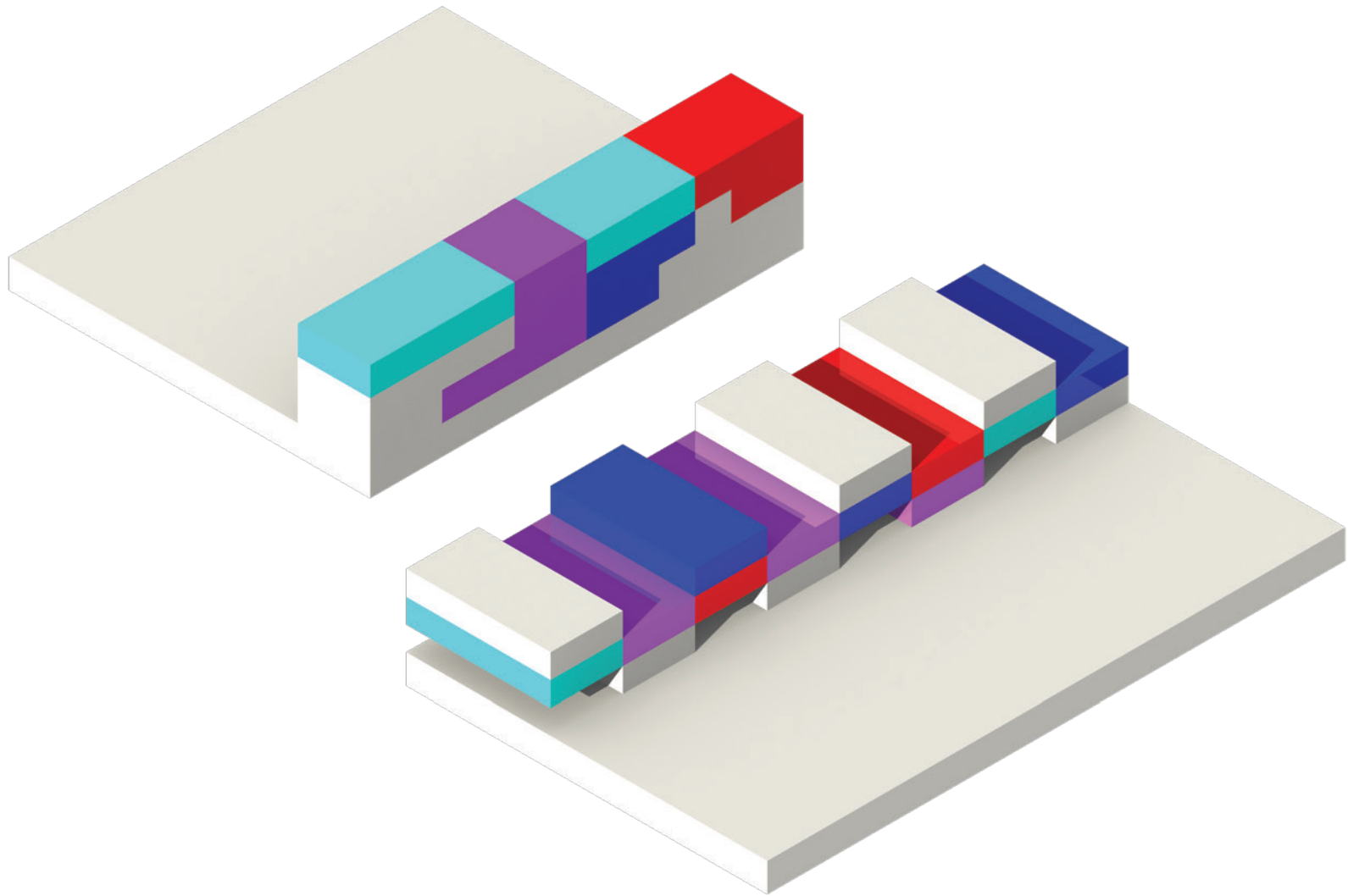
COMMUNITY



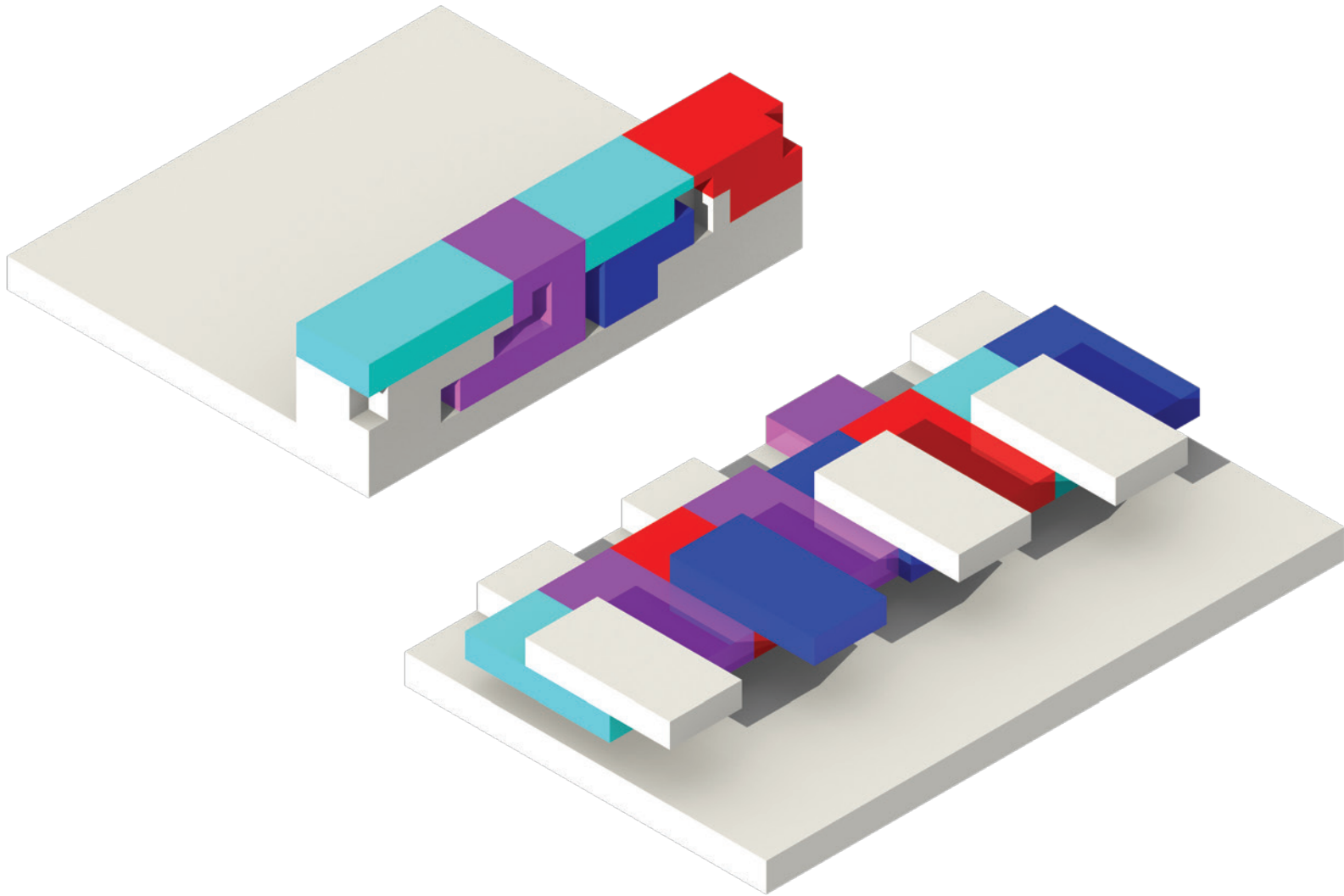
COMPRESS
- Densify the living space



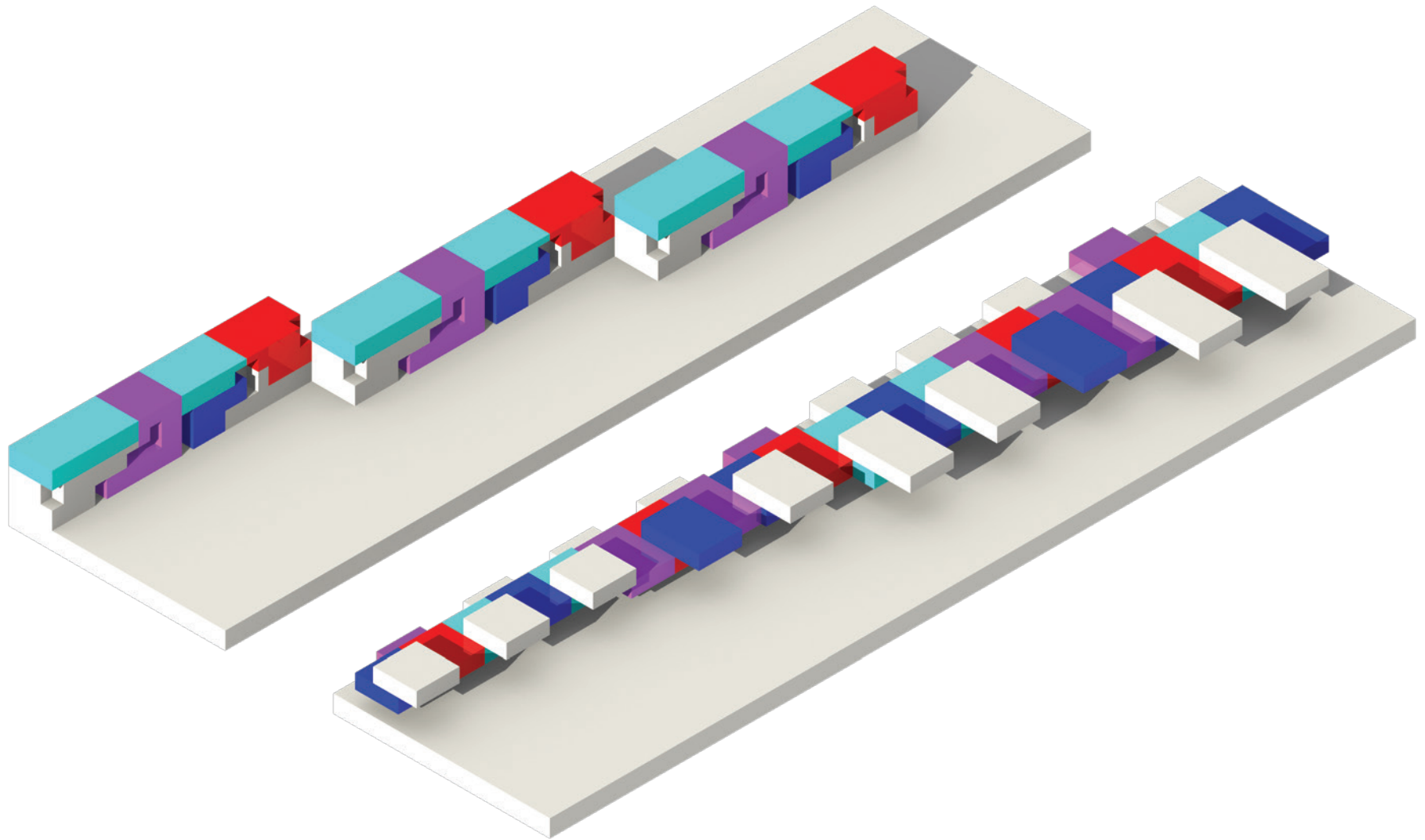
ELEVATE
housing by placing it above a retail plinth.



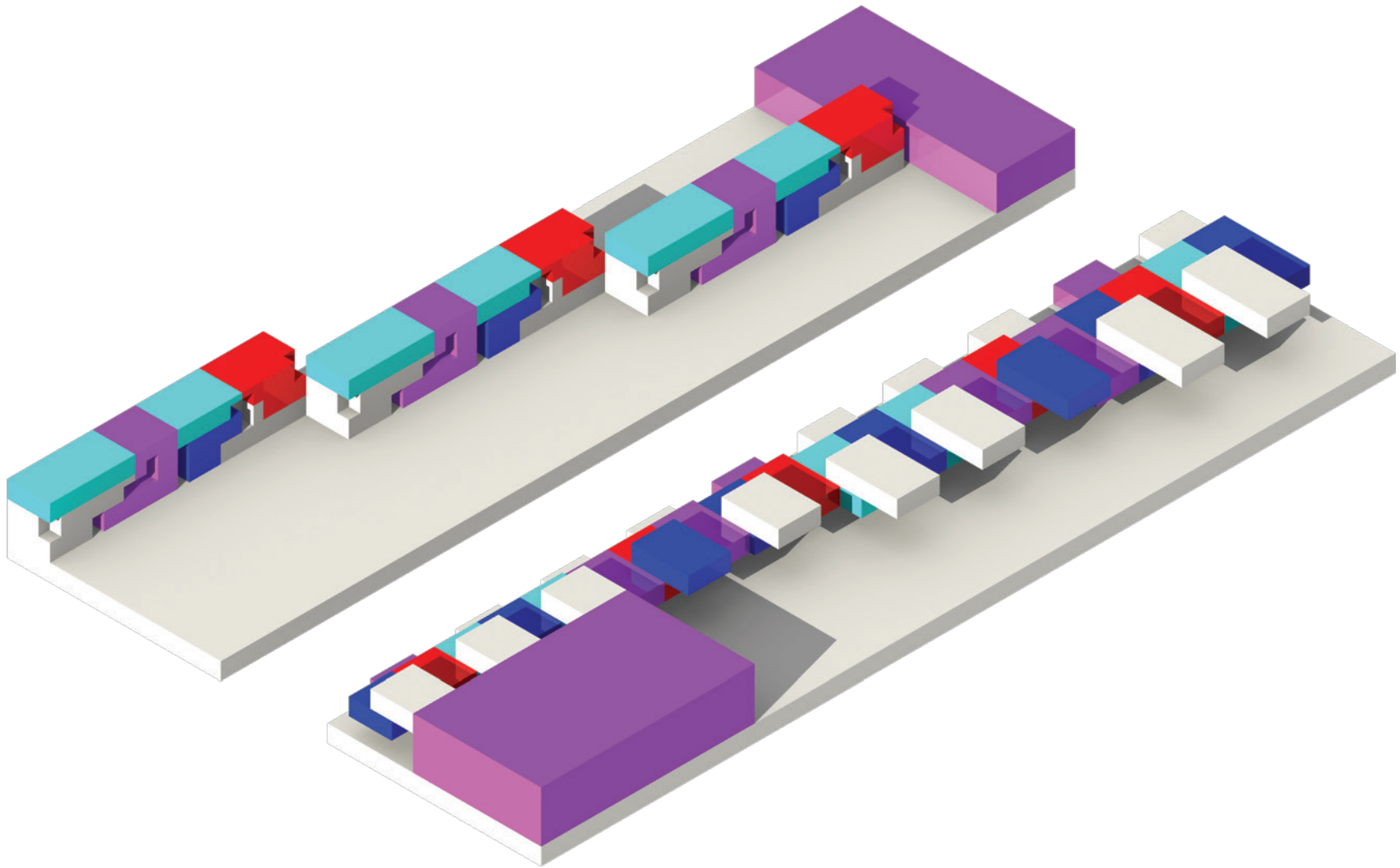
DISTORT
the units by manipulating their size and location.



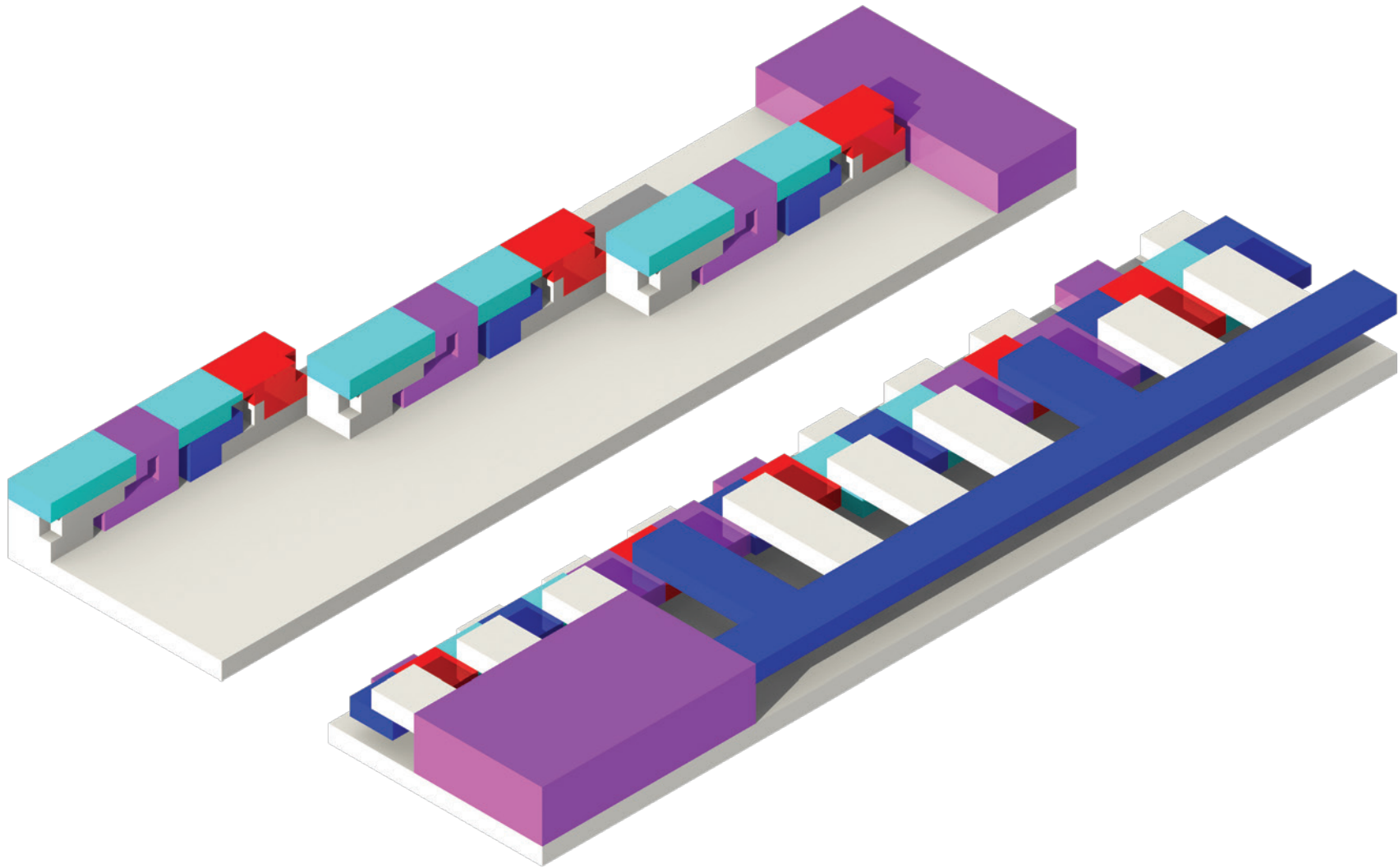
SHIFT
the units to create a unique street presence for each unit.



MARCH
the building down the street to create a streetwall.

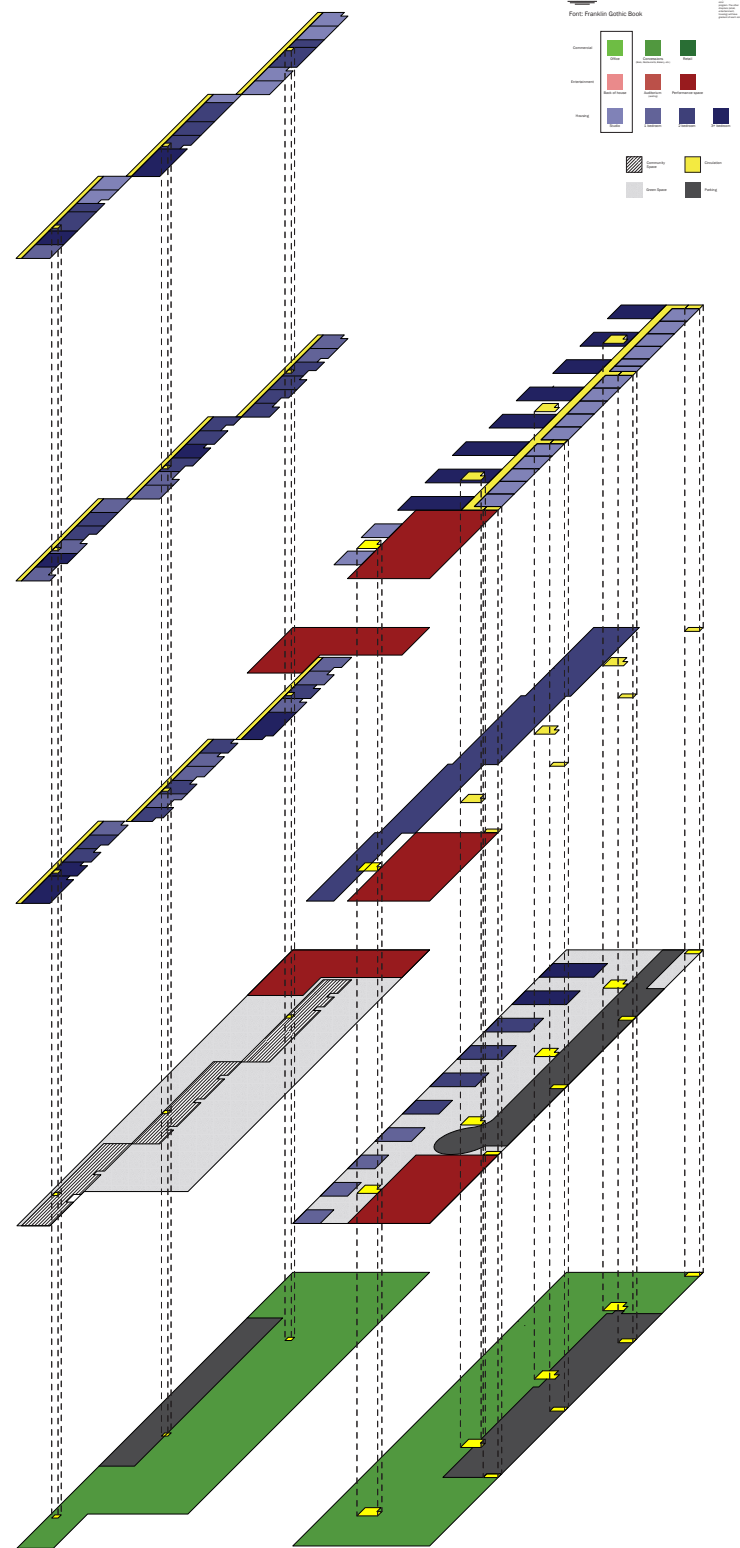
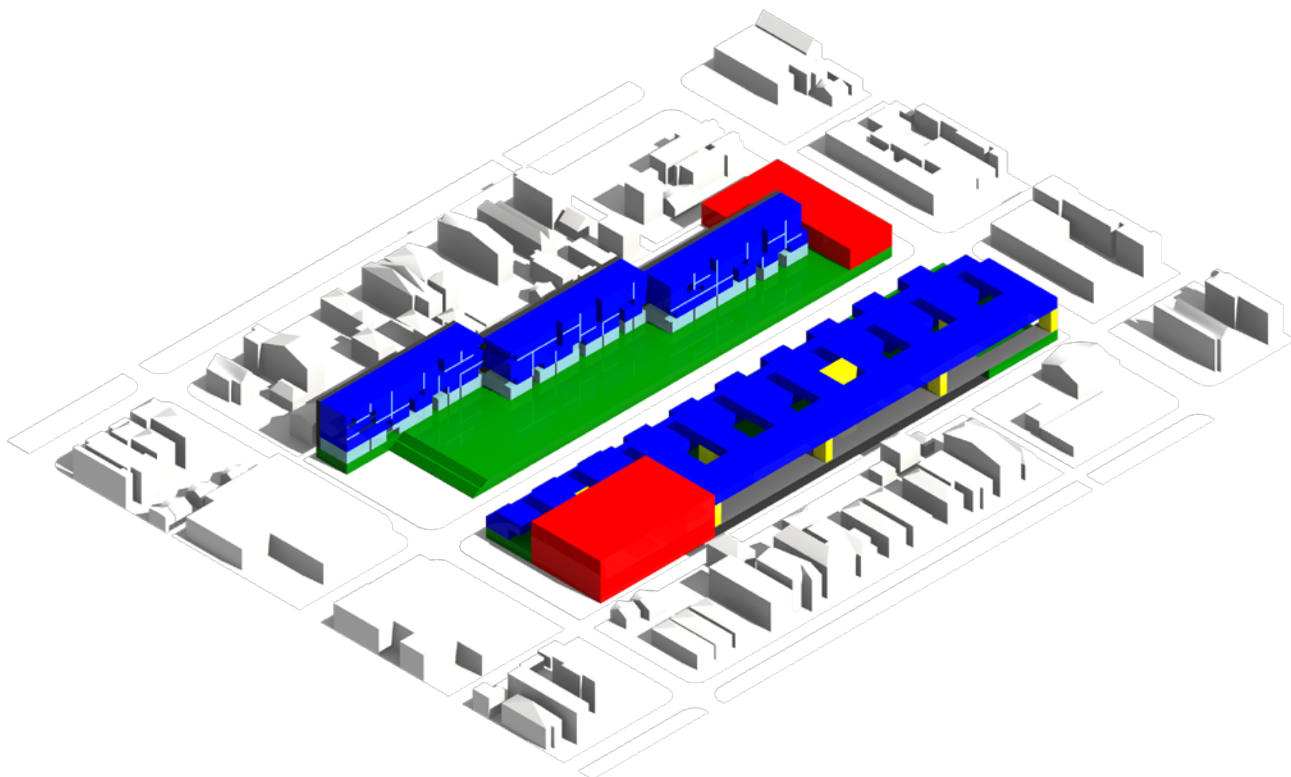


PLACE
entertainment as anchor points on either side of the city block.

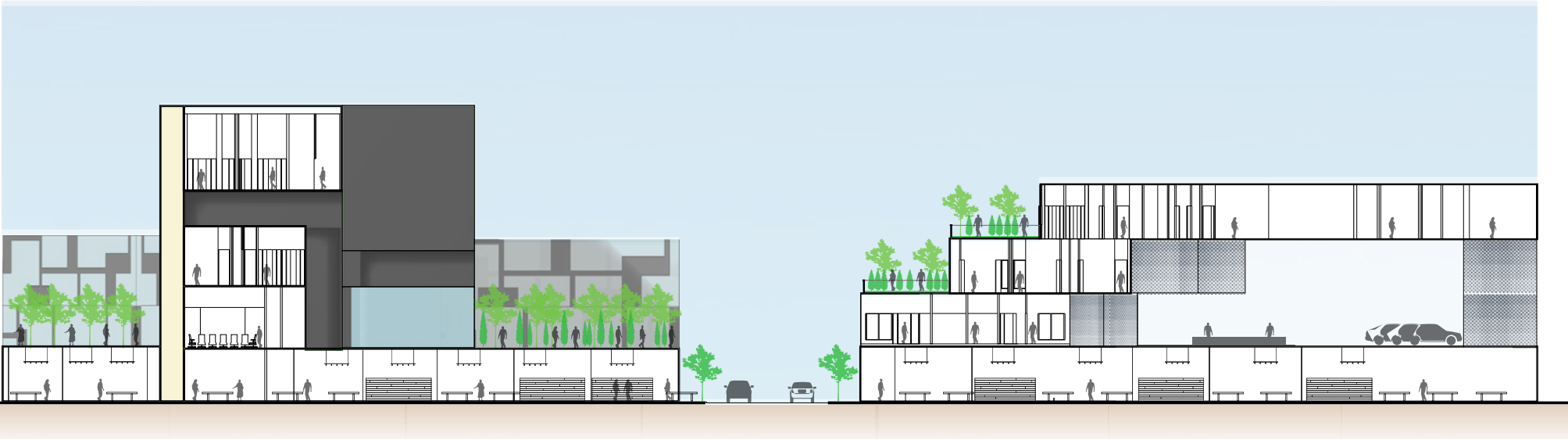


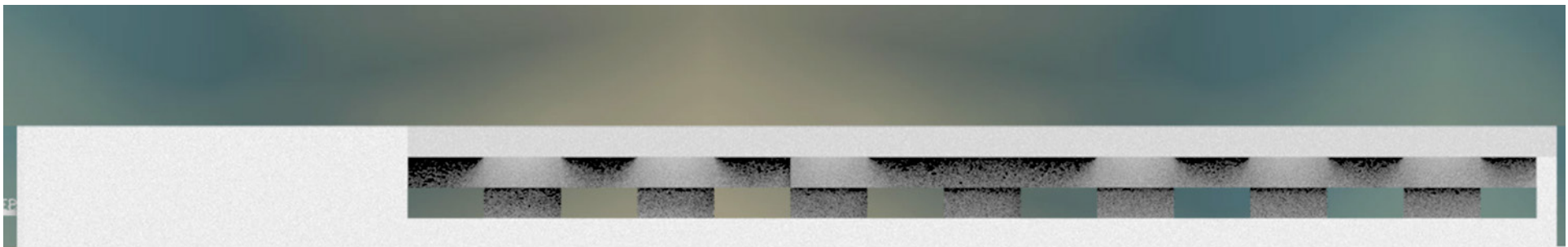
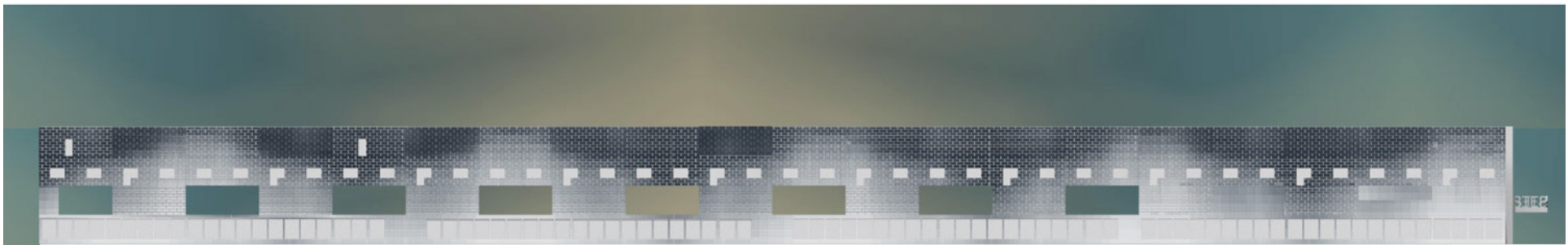
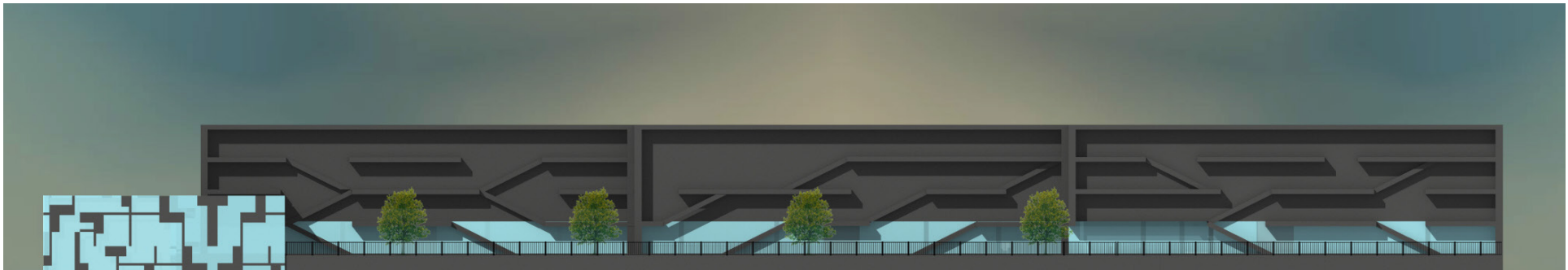
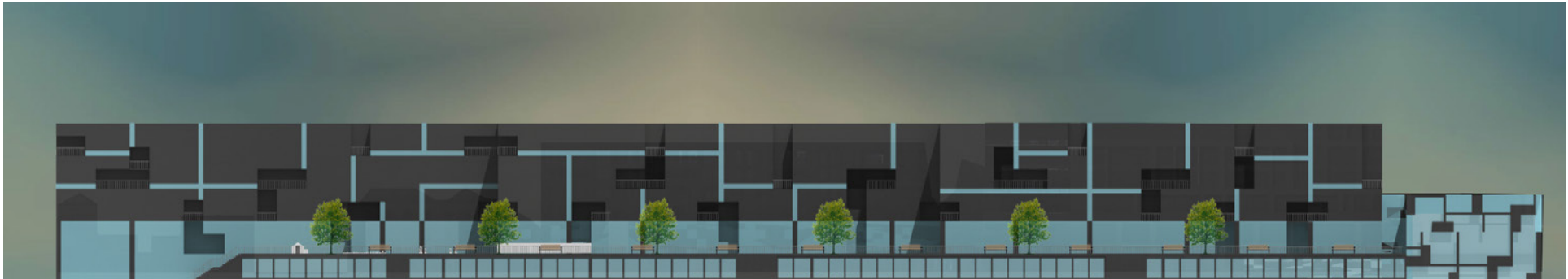
THE STEPPES

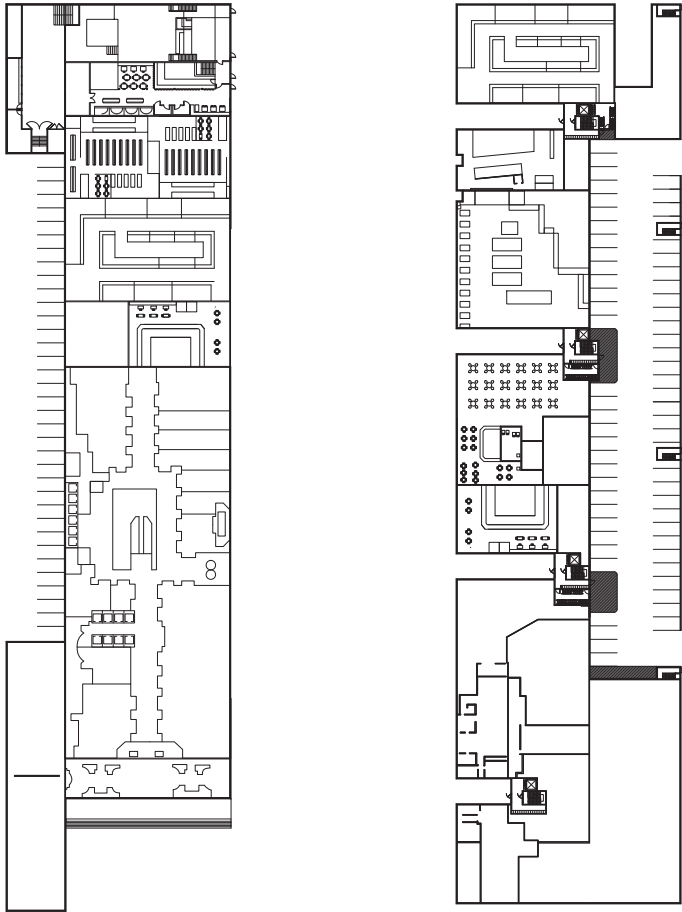
- The mixed-use building designed to revitalize the South Chicago neighborhood, bringing in a new way of interacting with each other and the built environment.



CROSS SECTION

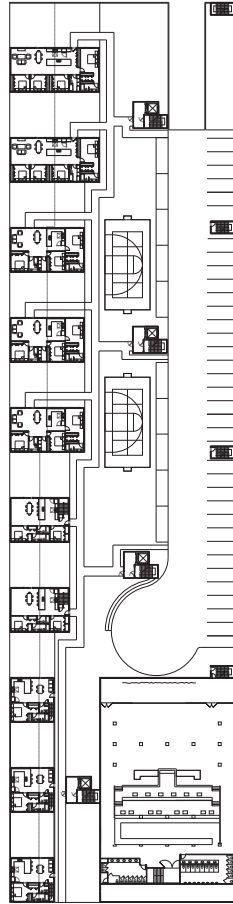
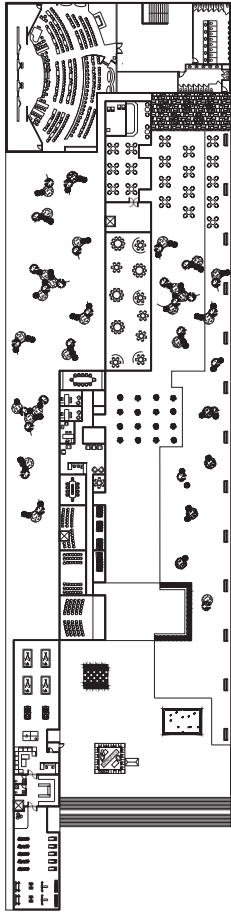




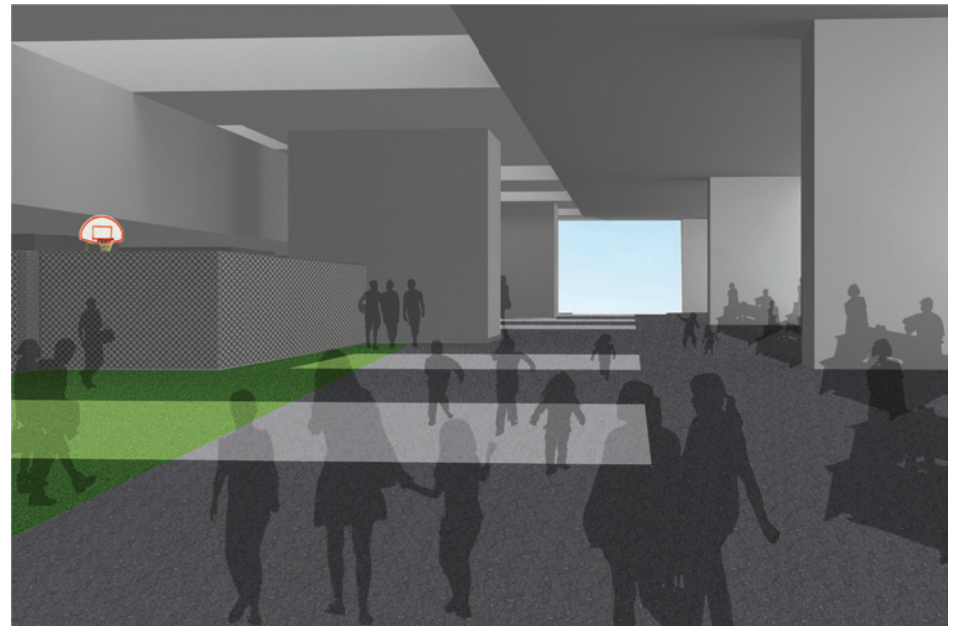


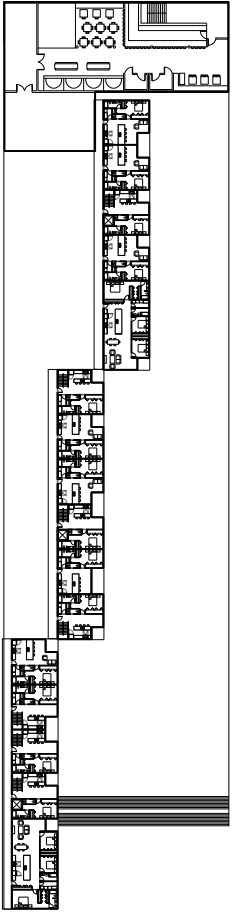
First Floor - Commercial



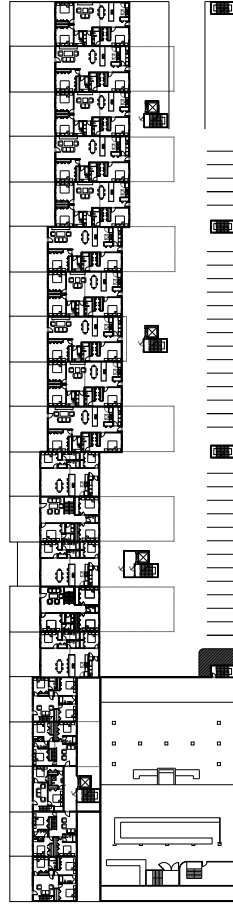


Second Floor - Community Space

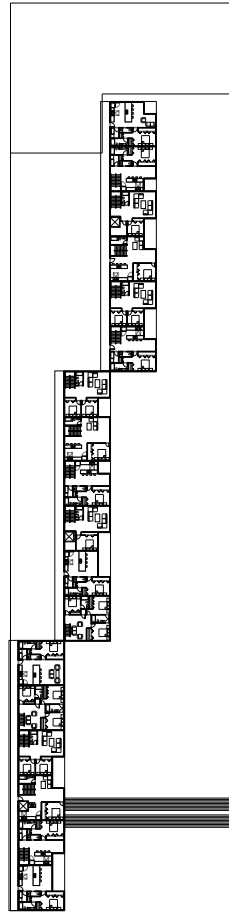




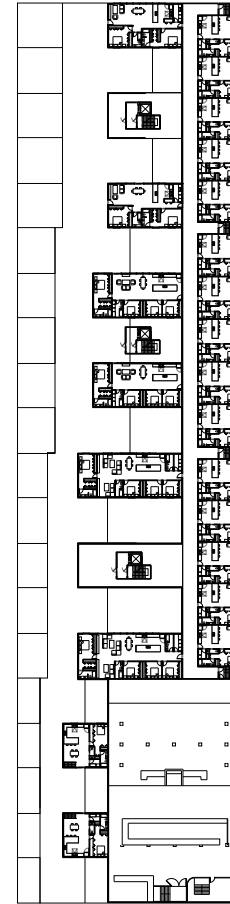
Third Floor - Housing

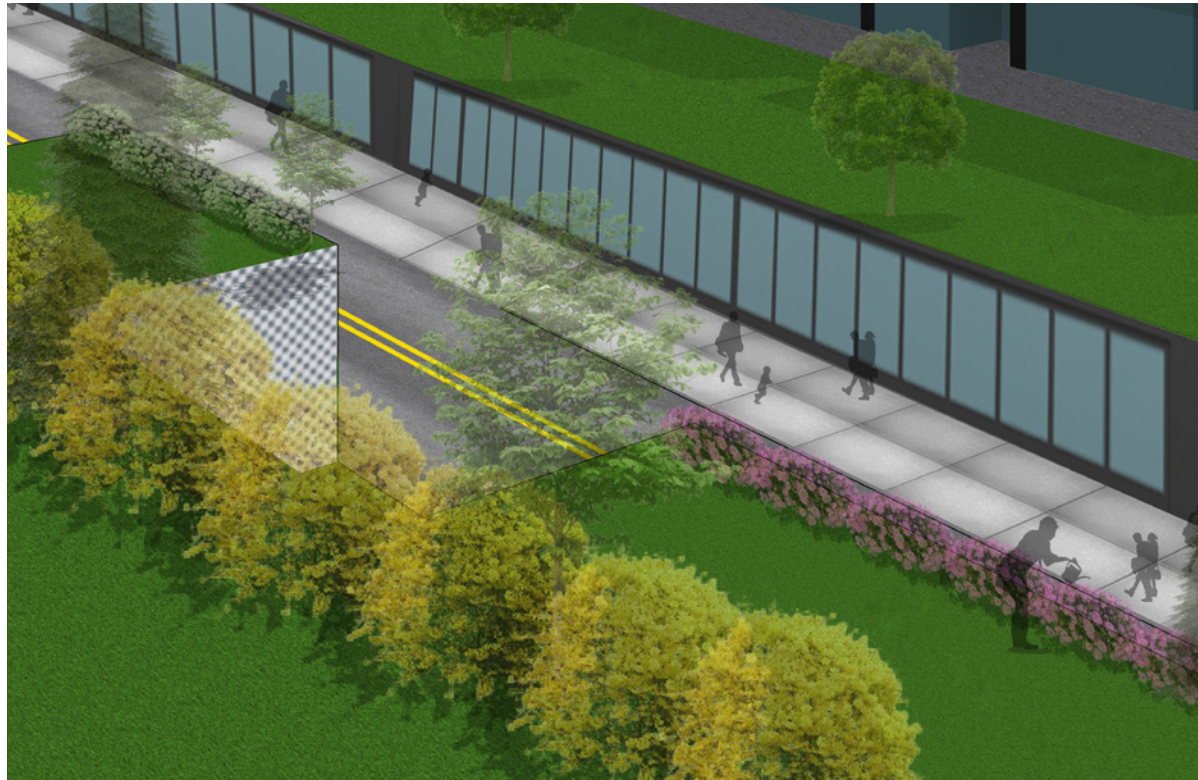
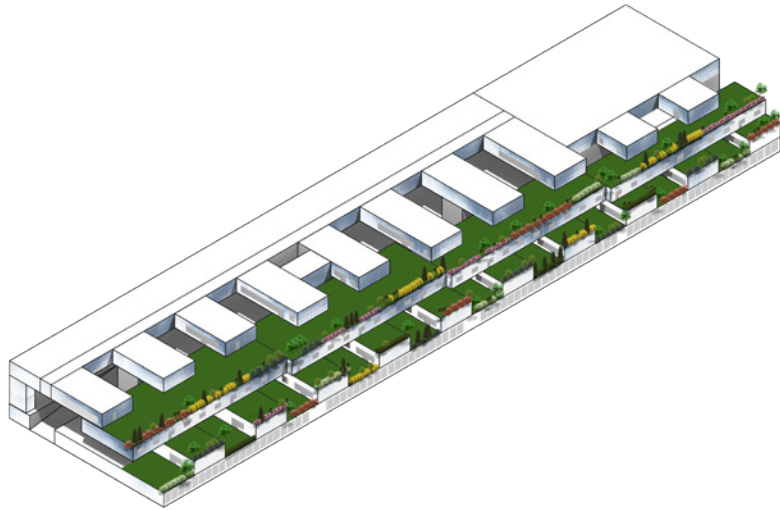
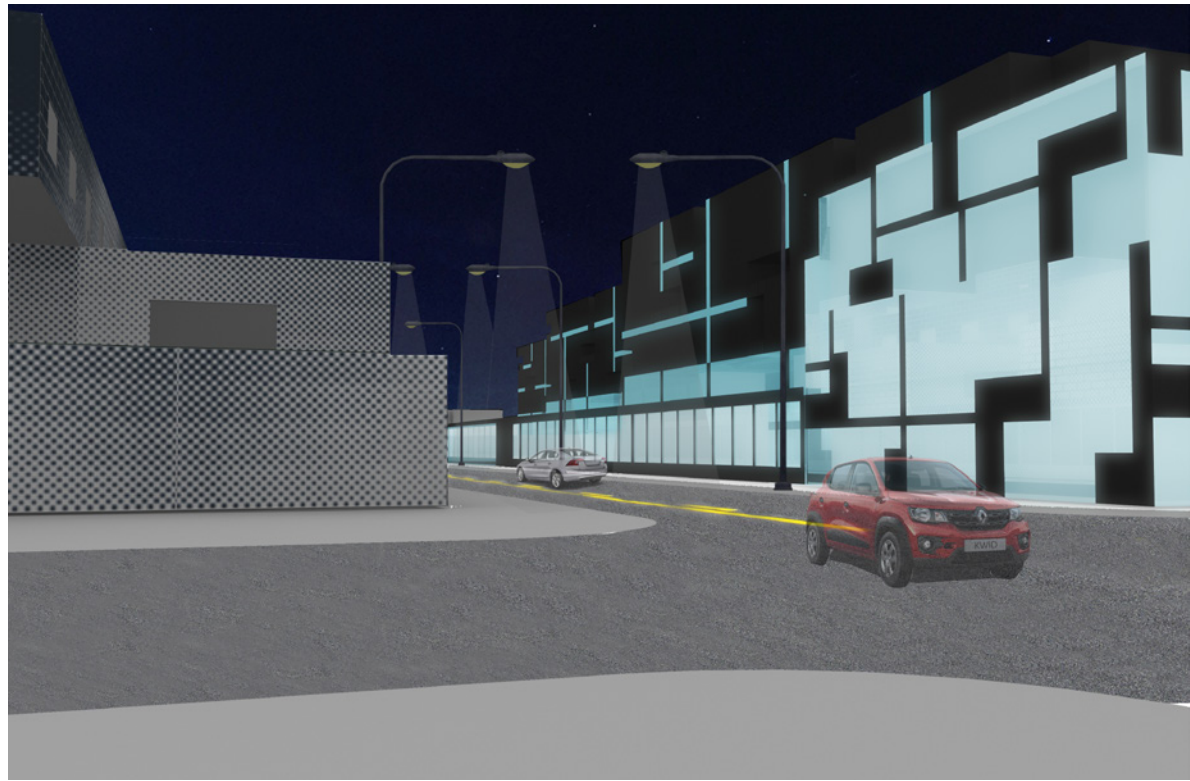
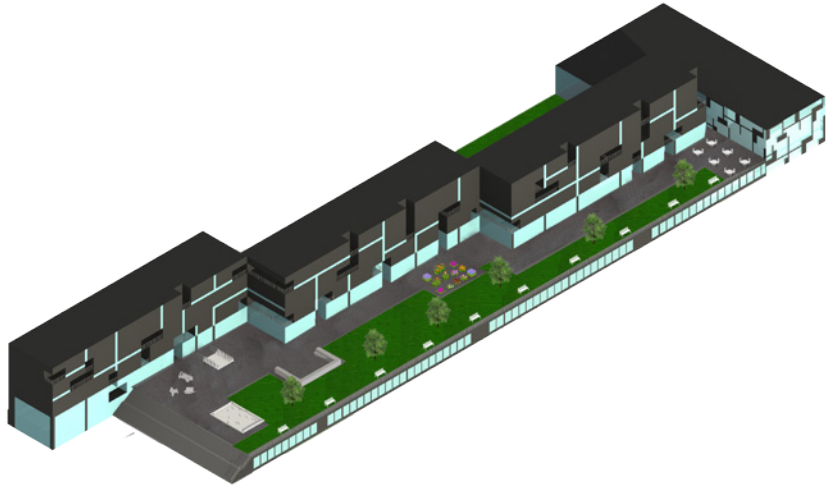


Fourth Floor - Housing

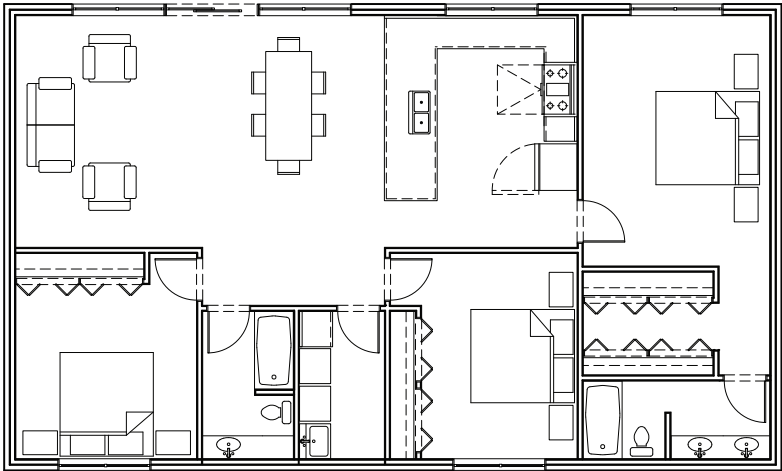


Fifth Floor - Housing





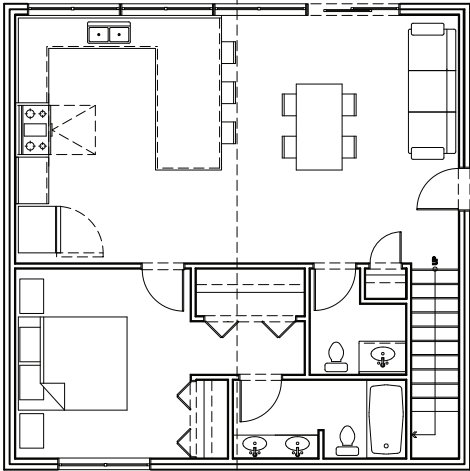
3 Bedroom Apartment



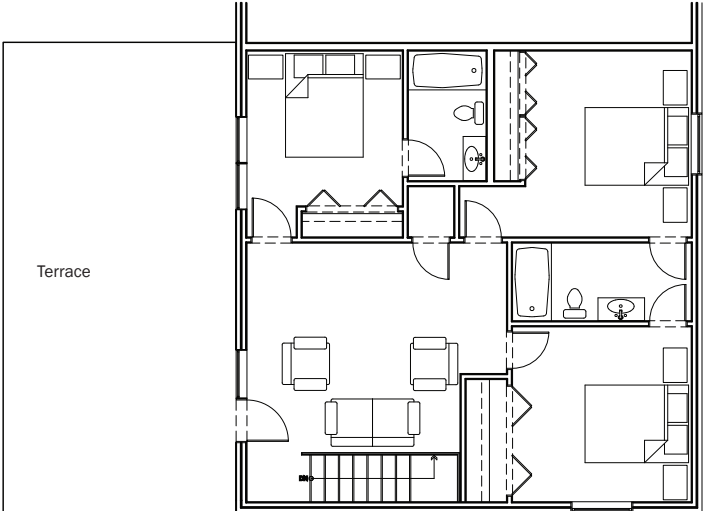
First Floor



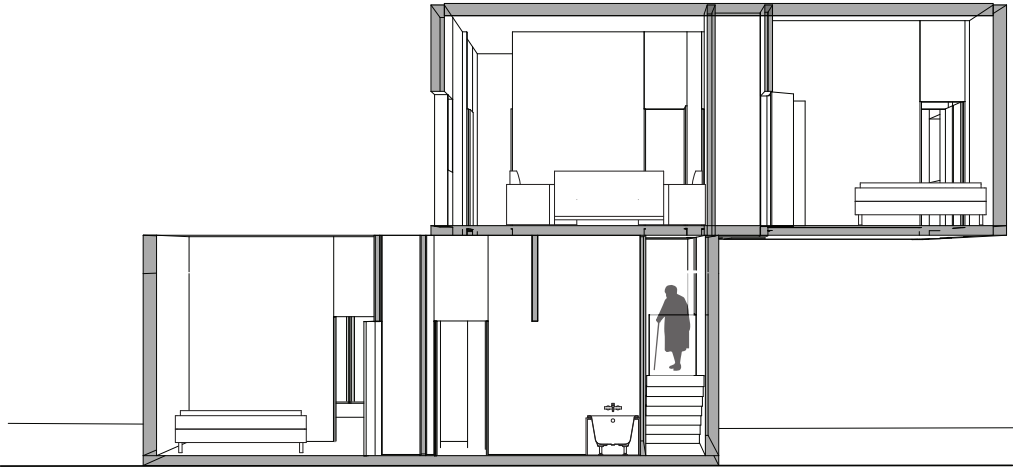
3 Bedroom Apartment



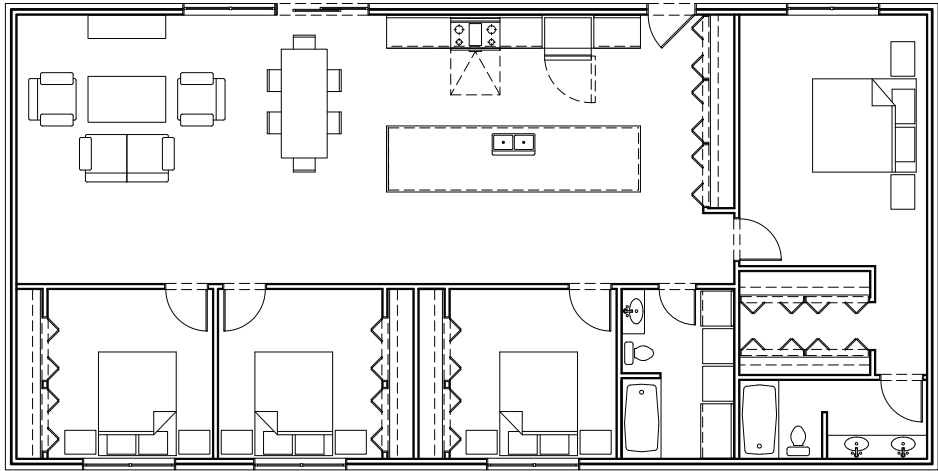
First Floor



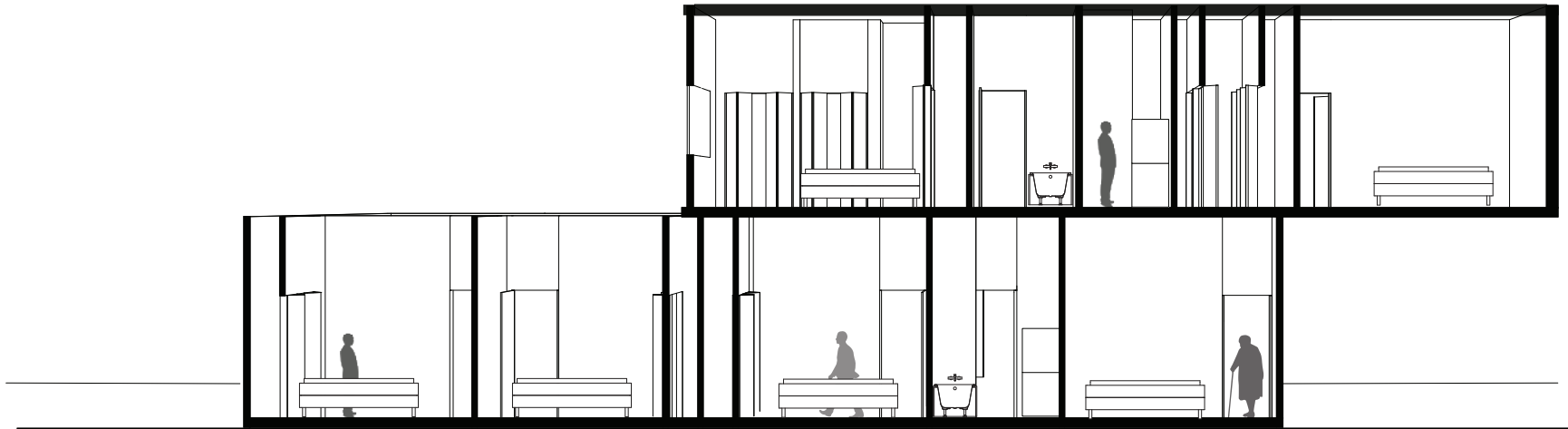
Second Floor



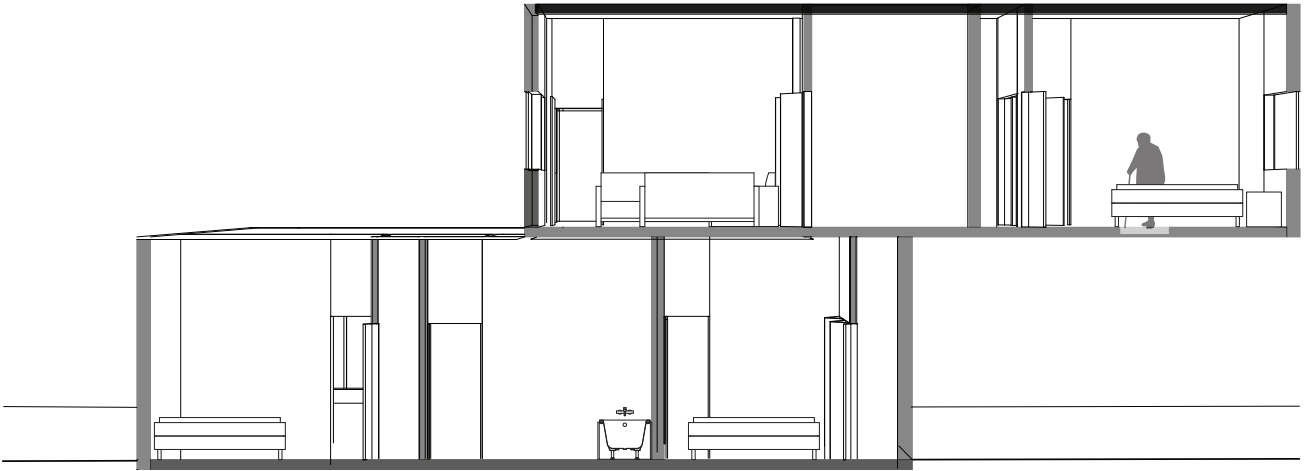
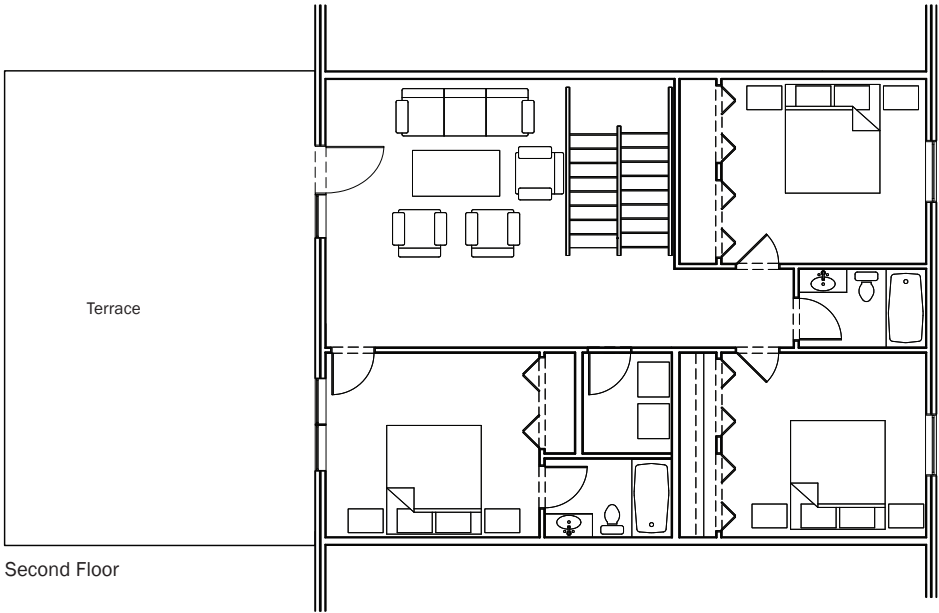
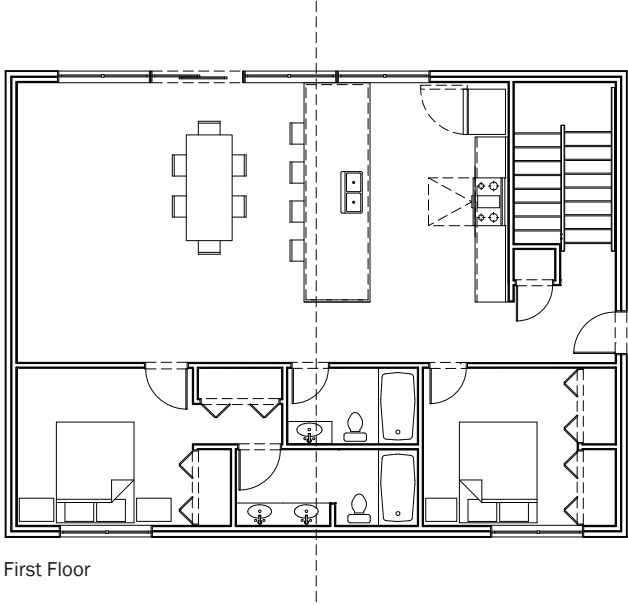
4 Bedroom Apartment



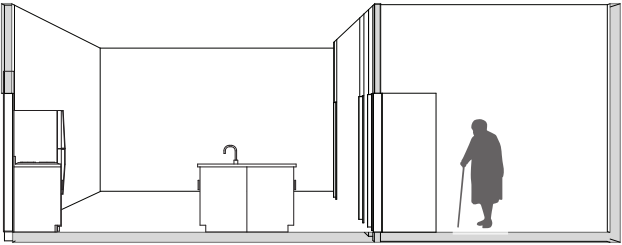
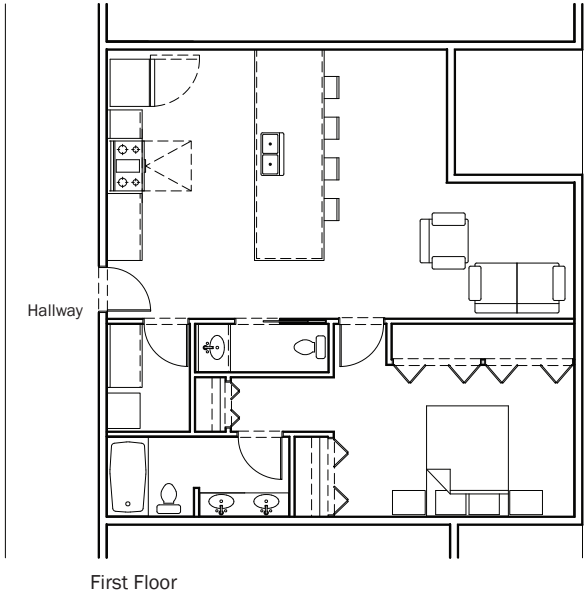
First Floor



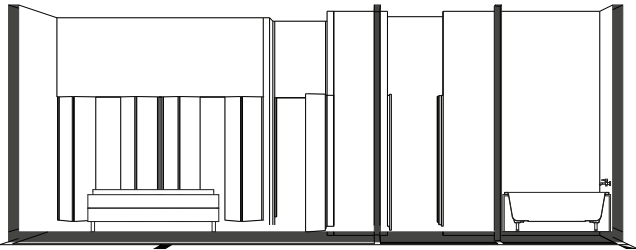
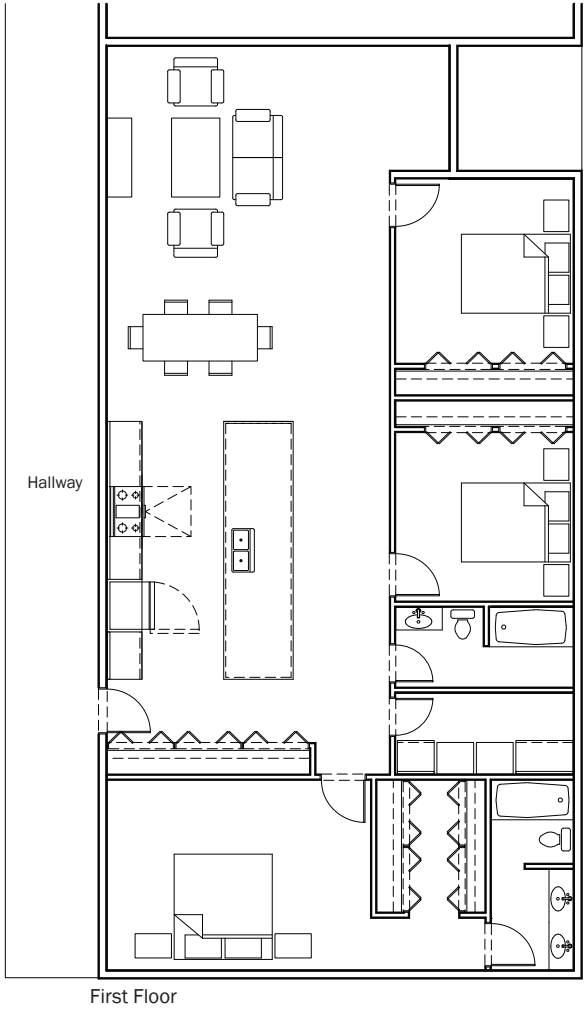
5 Bedroom Apartment



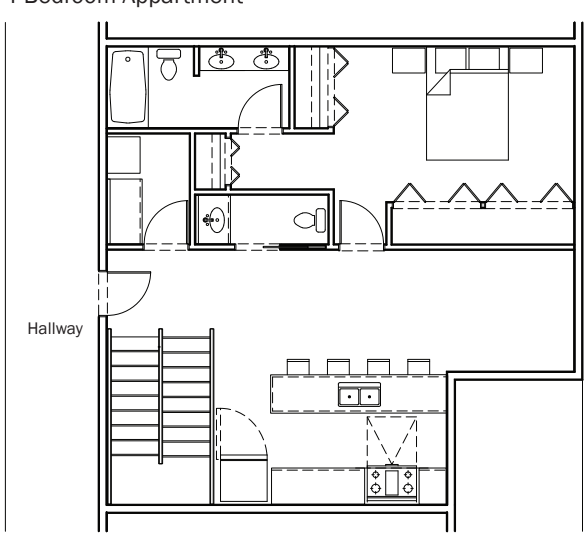
1 Bedroom Apartment



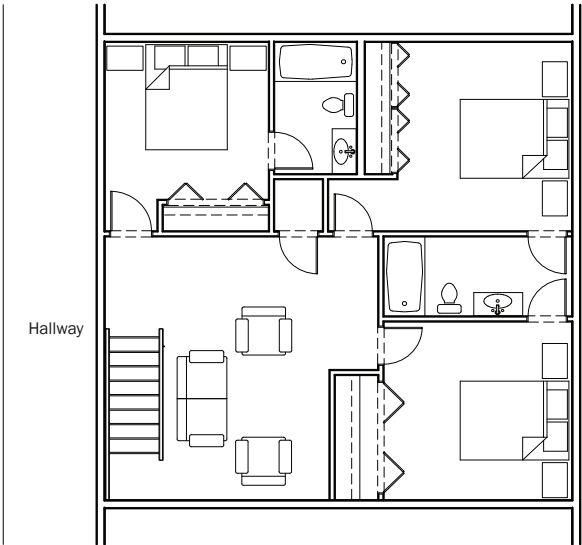
3 Bedroom Apartment



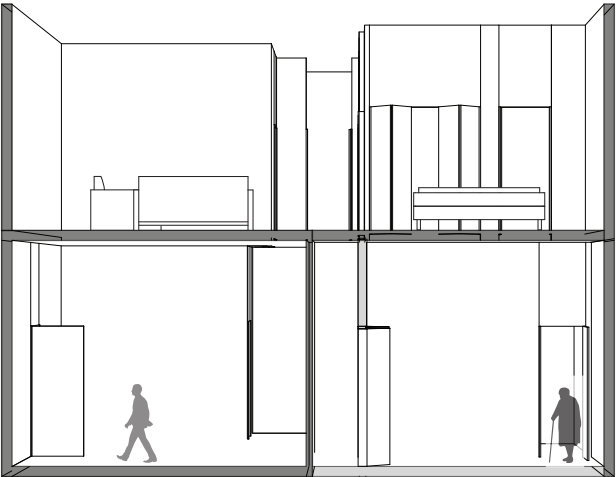
4 Bedroom Apartment



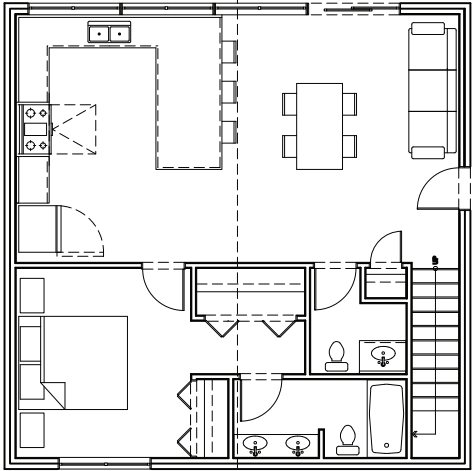
First Floor



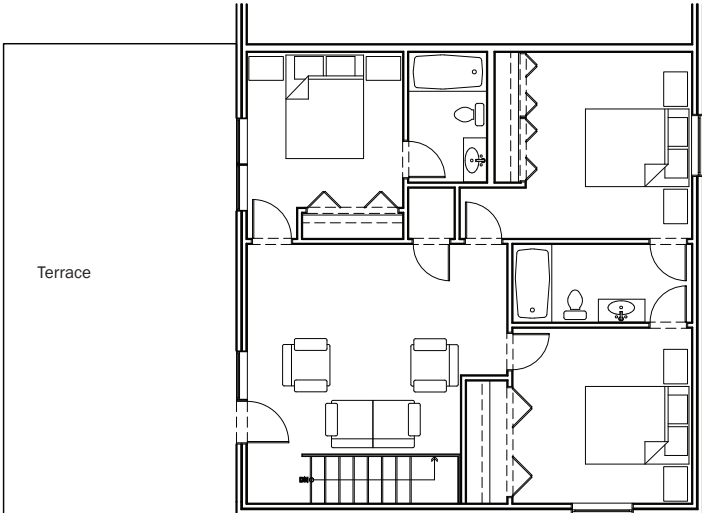
Second Floor



3 Bedroom Apartment



First Floor



Second Floor

