



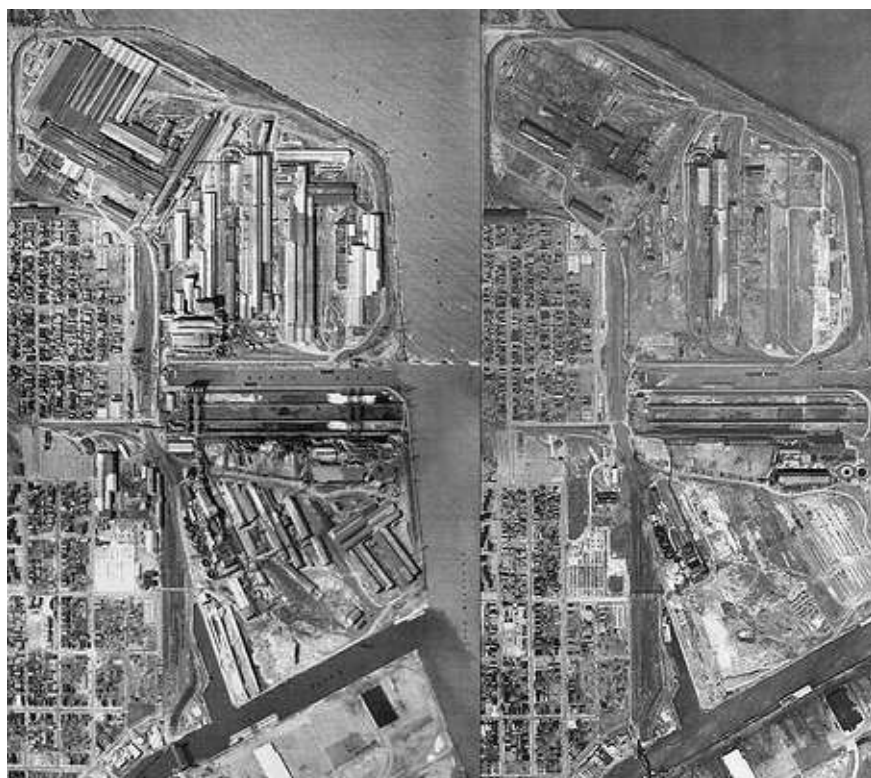


*The Walking Mural*

Gateway park for South Chicago

Instead of using walls to isolate and divide,  
The Walking Mural, engages the pedestrian life of South Chicago,  
and transforms a visual experience of reading a mural,  
into a physical discovery of space and art.

## Types of walls in South Chicago...



## Walls: (Industrial)



Parallel ore walls of the South Works steel mill



Gates of the Nickelson Industrial Services Inc.

## Walls: (Commercial)



Store front along Commercial Ave.



Store front along Commercial Ave.



## Walls: (Residential)



Empty lot framed by the walls of the adjacent buildings on Commercial Ave.



A fence dividing two lots on the corner of Commercial Ave. & Baltimore Ave.

## Walls: (Murals)



Mural: "Remebering Mireles"  
91st and Commercial Ave.



Mural: "Vietnam Veteran Memorial"  
91st and Brandon Ave.



# The Site



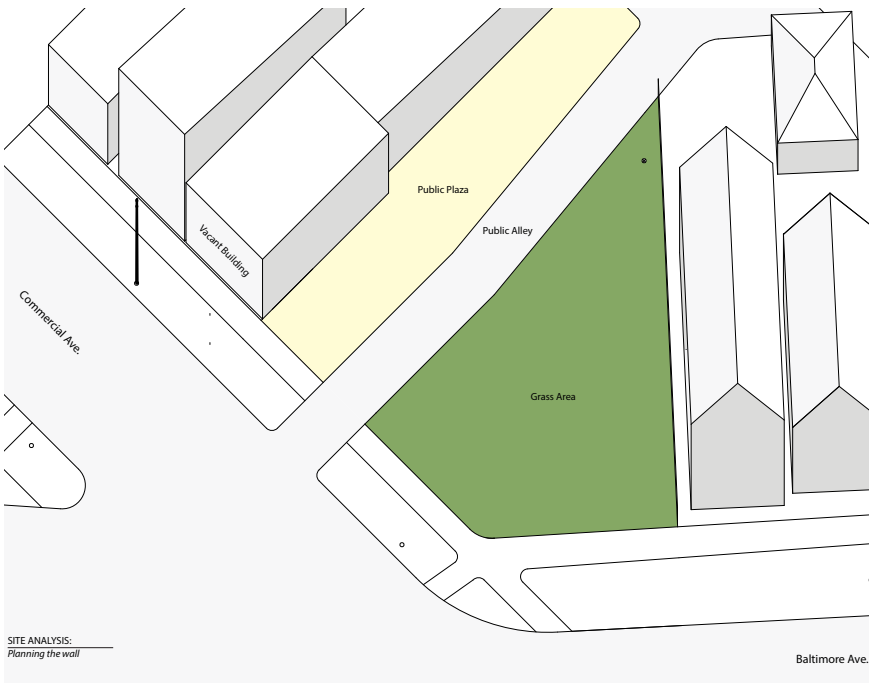
On Commercial Ave. looking south

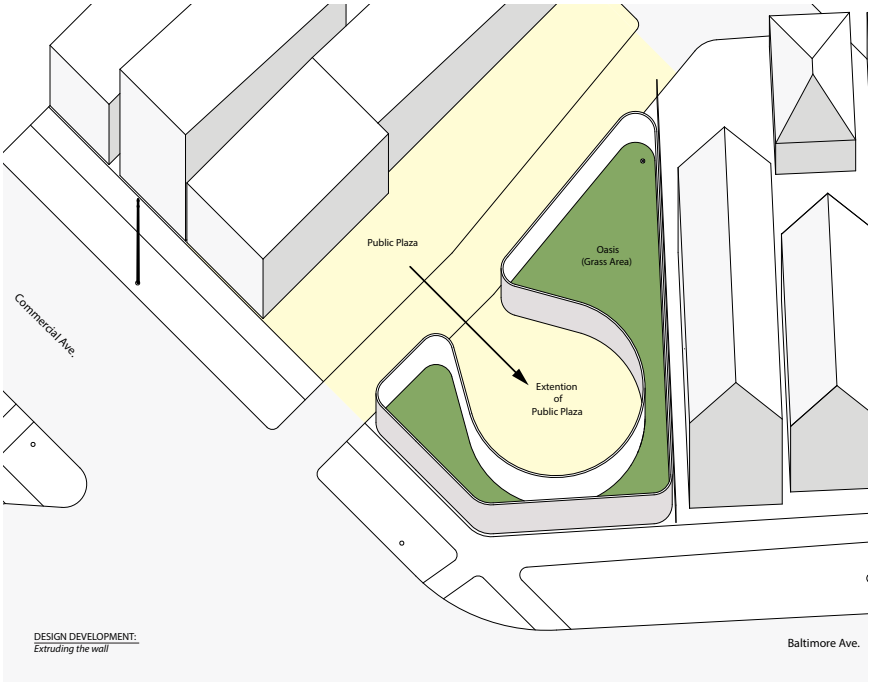
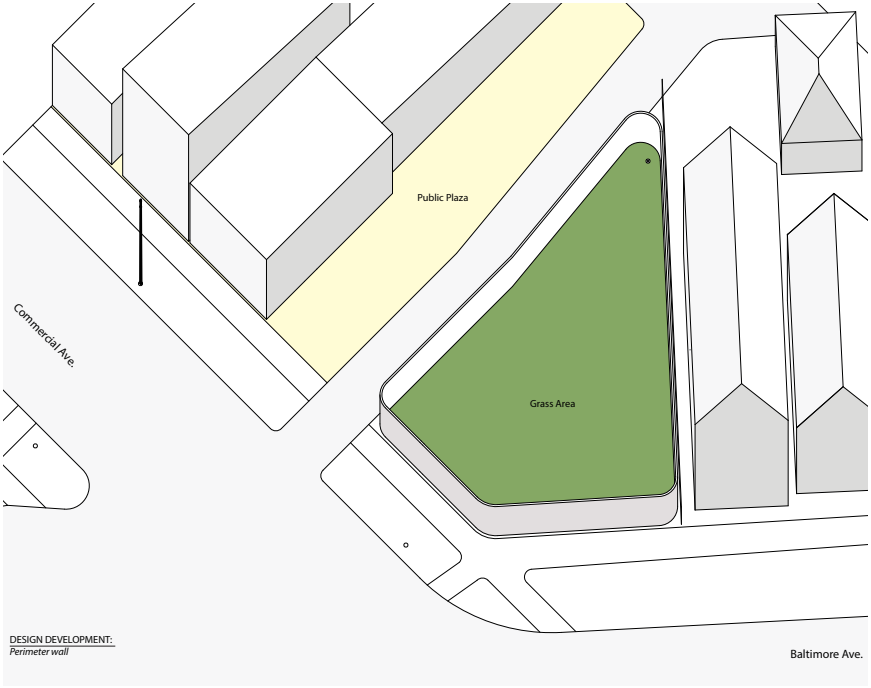


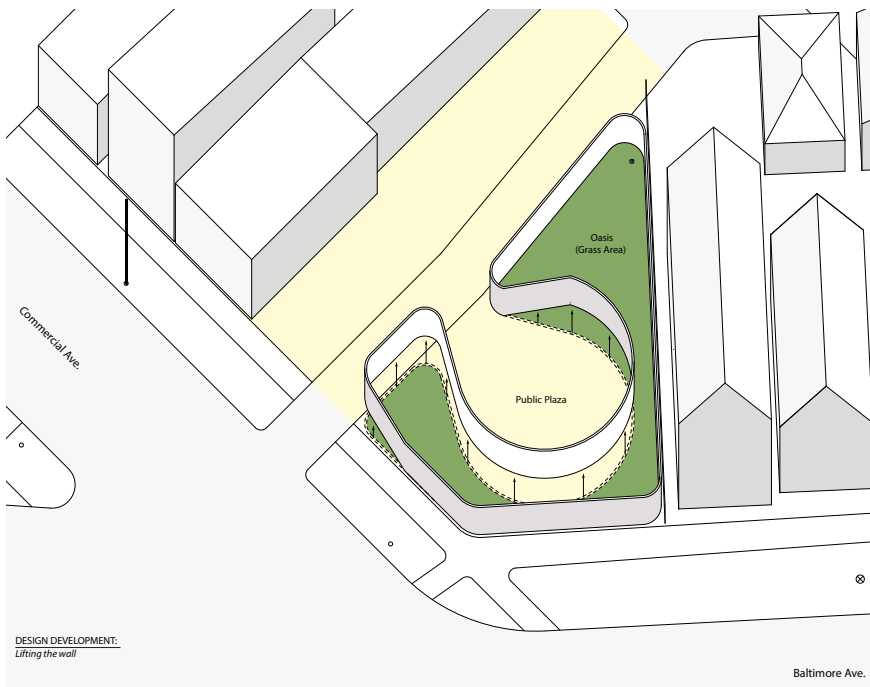
On Commercial Ave. looking north

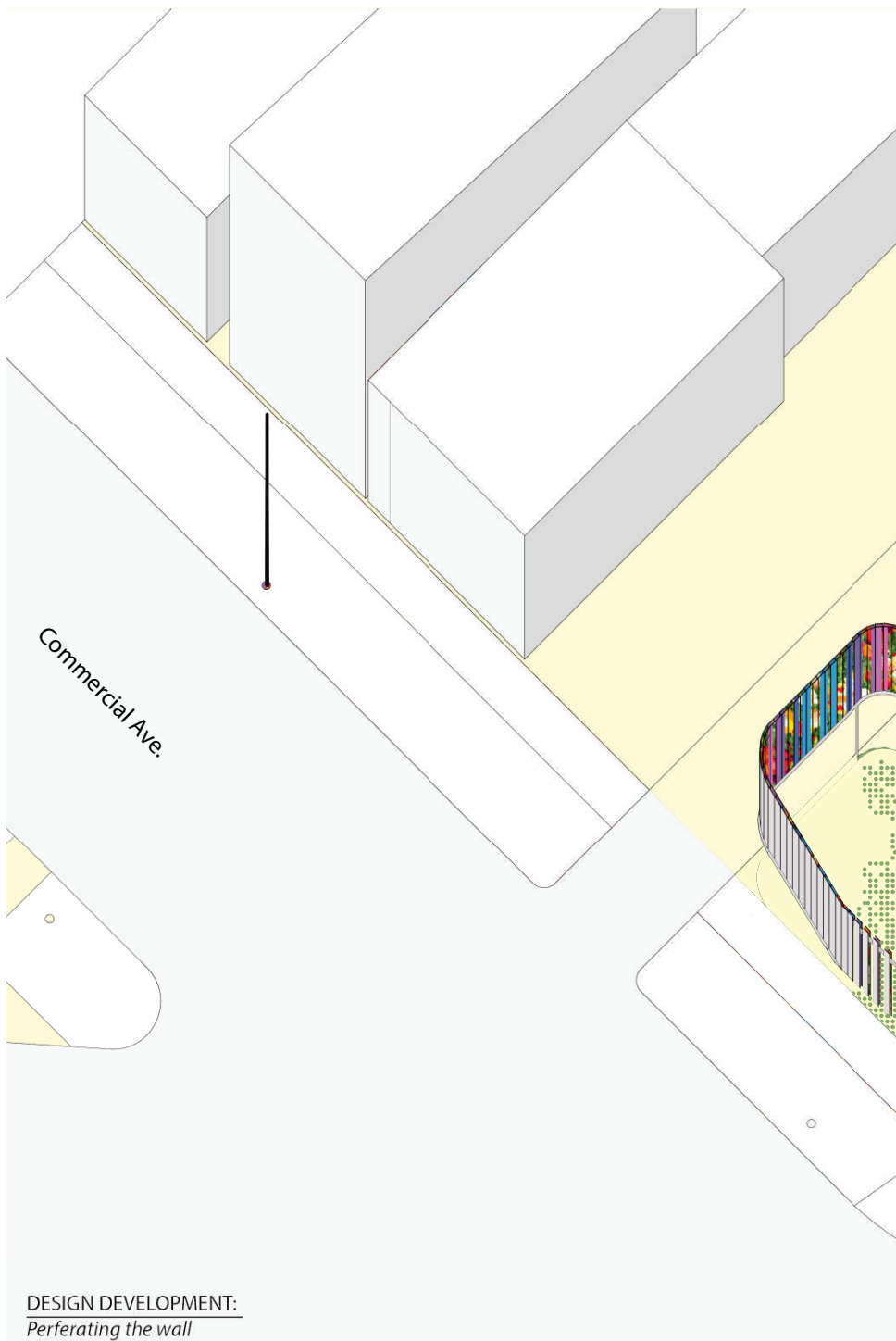


Existing Public Plaza



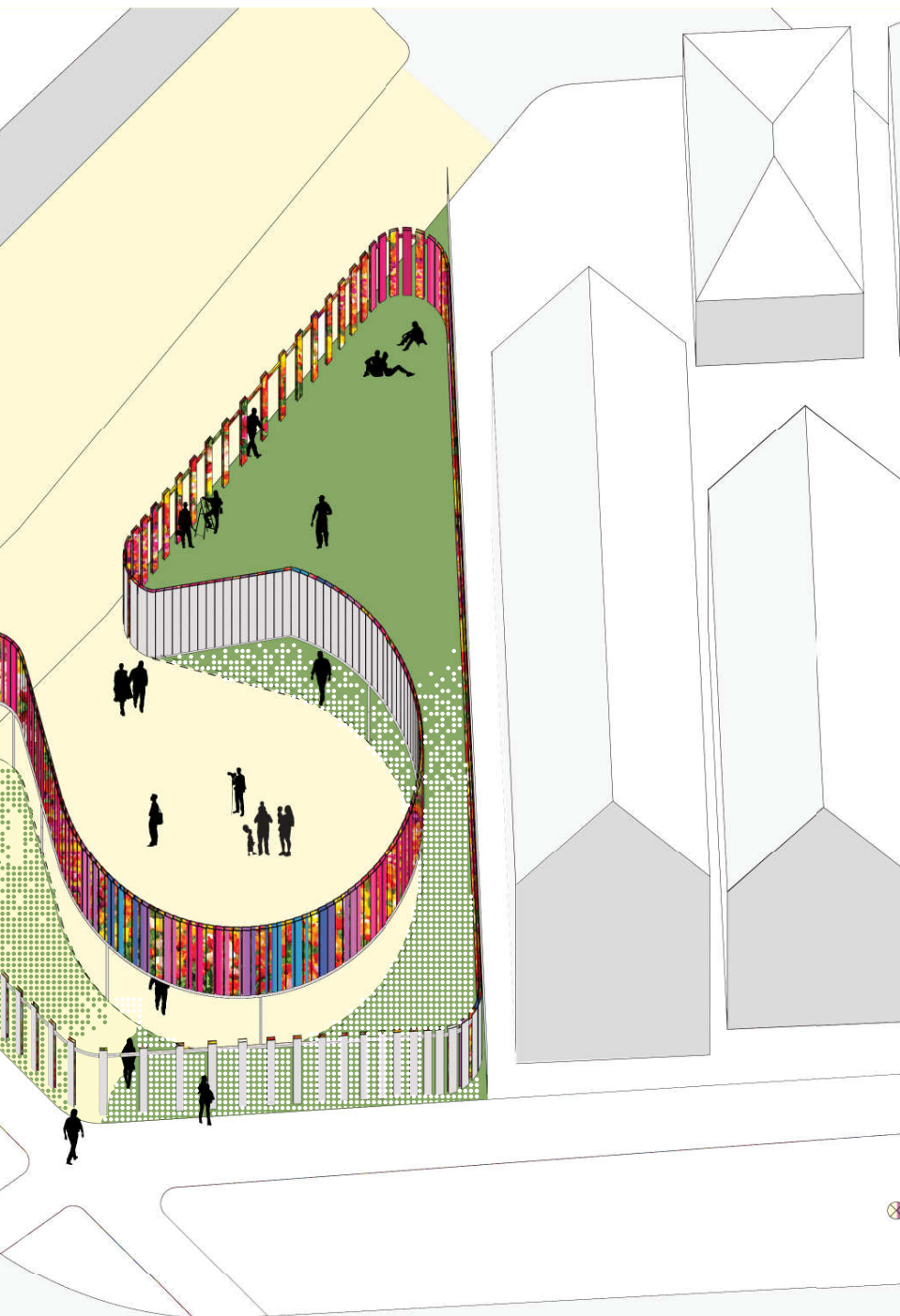






DESIGN DEVELOPMENT:  
*Perforating the wall*





Baltimore Ave.

