
Lawndale Service Area Databook

Produced for Lawndale Christian Development Corporation – August 2021



**Great Cities
Institute**

Lawndale Service Area Databook

August 2021

Produced for



Authors

Jackson Morsey, AICP
Urban Planner

Alex Linares
Economic Development Planner

Jack Rocha
Community Development Planner

Matthew D. Wilson
Senior Research Specialist

UIC Great Cities Institute

Teresa Córdova, Ph.D.
Director and Professor

Great Cities Institute (MC 107)
College of Urban Planning and Public Affairs
University of Illinois at Chicago
412 South Peoria Street, Suite 400
Chicago, Illinois 60607-7067

312.996.8700
gcities@uic.edu
greatcities.uic.edu

Lawndale Service Area Databook Highlights

Introduction

Like most communities, Lawndale residents desire nice homes, safe streets, good schools and dignified living-wage jobs. The well-being of residents is bolstered by the economic health of a neighborhood where conditions foster the building of community wealth. However, North Lawndale residents are losing wealth-building opportunities that make these quality of life conditions easier to attain.

Some indication that **community wealth is lost is when there is leakage**. Leakage occurs when wages from jobs within the community are distributed to people residing outside of the community or when residents within the community must spend money outside of the community to consume basic necessities.

Some major trends identified in the Lawndale Service Area Databook are that:

- **\$124 million in resident spending is leaving North Lawndale every year.** This leakage is mainly due to:
 - **Insufficient living wage jobs within North Lawndale for North Lawndale residents**
 - **Underdeveloped commercial corridors or centers, and**
 - **Minimal availability of goods and services within North Lawndale.**
- When economic development opportunities arose in North Lawndale, they tended not to benefit existing residents. **Jobs within the community grew by approximately 3,000 between 2010 and 2018; however, most of those jobs went to workers who live outside of the community.**
 - **In 2018, while more than three quarters of North Lawndale residents identify as Black, more than half of the jobs in the area were held by workers who identify as white (non-Hispanic), yet 2020 Census Data shows that the white (non-Hispanic) population of North Lawndale comprised just 2.3 percent of the total population.**

Jobs located within the community tend to pay higher than those held by residents who leave the community for work.

- Over half of jobs (51.9 percent) in North Lawndale paid more than \$3,333 per month in 2018, however most working residents (76.8 percent) were paid \$3,333 or less per month. In 1980, median household income was already much lower in North Lawndale when compared to more affluent neighborhoods. **Yet from 1980 to the period of 2015-2019, the inflation-adjusted median household income in North Lawndale decreased by an estimated \$4,000.**
- **There is a mismatch between jobs in the community that require a bachelor's or advanced degree and the percentage of residents that have a bachelor's degree or higher.**



- In 2018, **21.2 percent of jobs in the community required a bachelor’s or advanced degree** but **12.7 percent of working residents had a bachelor’s degree** or higher.
- In 2018, the **largest employing economic sector in North Lawndale was the Health Care and Social Assistance industry**, which consisted of **43.4 percent of the jobs in North Lawndale**. However, **only 20.1 percent of North Lawndale residents worked in the Health Care and Social Assistance industry**. The **second largest employing sector** in North Lawndale was in the Educational Services industry, in which **only 2.4 percent of North Lawndale’s residents worked**.

Historic patterns of population loss still persist, contributing to the challenges of building a vibrant local economy.

- From 2010 to 2020, North Lawndale’s *total population* decreased by 979 residents, from 44,434 to 43,455 residents.
- The Black (non-Hispanic) population of North Lawndale decreased by an estimated 3,981 residents from 2010 to 2020. This represents a 9.7 percent decrease in the Black population of North Lawndale.
- Black residents made up 84.9 percent (36,893) of the neighborhood’s population in 2020, a decrease from 92 percent (40,874) in the 2010 period.

These social-economic characteristics of North Lawndale set the stage for understanding trends in population shifts, jobs and employment, household income and educational attainment, housing, poverty and crime and health factors. This Databook, commissioned by the Lawndale Christian Development Corporation (LCDC), funded by the Polk Brothers Foundation and prepared by UIC’s Great Cities Institute (GCI), points to a number of these trends in North Lawndale. The purpose of this collaboration between the Lawndale Christian Development Corporation and the GCI is to create a North Lawndale Databook that LCDC and their partners can use to think about “who we are, anchor our strategy and adjust strategies going forward.” This Databook provides information to help inform strategic choices in shaping the future of North Lawndale.

Established in 1987, “LCDC’s work is done through the development and management of affordable mixed-use housing, providing homeownership for working families and creating cooperative businesses in pursuit of economic development.”

Lawndale Christian Development Corporation “organizes with the community, for power, to eliminate health and wealth disparities in North Lawndale and around the world.” It’s work is infused with the voices of the community. LCDC’s leadership and members have lived and worked in North Lawndale for more than 30 years and have a keen interest in the future health, well-being and development of the overall community. Simultaneously, LCDC is aware of market forces and forthcoming projects that have the potential to result in gentrification and recognizes the importance of empowering people to prevent the further displacement of long-time residents of North Lawndale.

The challenge is how to ensure that changes in North Lawndale benefit those who have continued to live there. LCDC's goal is to help transform the community for those who live in North Lawndale – i.e., transform the community without displacement and ensure that residents can thrive and be beneficiaries of changes.

Building from its past and current work – and the assets of North Lawndale – **LCDC is seeking to pursue a research-asset-based strategic approach towards those community goals.** The Lawndale Service Area Databook provides a basis to further identify community strengths as well as various threats, challenges and opportunities that inevitably impact policy decisions. This document provides data to inform and shape these policies and amplify the community's voice in public dialogue about the future development and growth of North Lawndale.

This Databook provides information on: demographics, educational attainment, educational assets, housing, ratio of income to poverty level, crime, zoning, streetscape conditions, transportation access, transportation mode and travel times, environmental conditions, parks and open space, cultural assets, non-profit organizations, health indicators, vacant land, and taxpayers.

Findings:

The information contained in this Databook makes it clear: diminished opportunities, both economic and educational, are having an adverse impact on the quality of life in North Lawndale and point to the need for substantial investments in the community. These investments should result in neighborhood improvements that insure to the benefit of current residents and to avert their displacement.

Two forces, historical income disparities among Chicago neighborhoods and the differing economic outcomes of those neighborhoods after the Great Recession, have further widened the gap in quality-of-life indicators between North Lawndale and more affluent neighborhoods such as Lakeview. These gaps and underlying socio-economic factors lead to increased rates of crime, and poorer health outcomes that create a racial-spatial divide within Chicago's neighborhoods.¹

Methodology

As a way to contextualize the profile of North Lawndale² in relation to other parts of Chicago, The Great Cities Institute (GCI) chose community areas to compare North Lawndale using its fact sheet "Chicago Community Area Economic Hardship Index" (2017). GCI selected three community areas for comparison: one that was in the highest tier of economic hardship (Englewood), a community area in the median of economic hardship (Kenwood), and a community area in the lowest tier of economic hardship (Lakeview). Among 77 community areas, North Lawndale ranks 13th in economic hardship, Englewood ranks 3rd in economic hardship, Kenwood ranks 55th, and Lakeview ranks 75th.

¹ Peterson, R. D., & Krivo, L. J. (2010). *Divergent Social Worlds: Neighborhood Crime and the Racial-Spatial Divide*. Russell Sage Foundation.

² The North Lawndale data was compiled from census tracts defined by the given project boundaries of the Lawndale Christian Development Corporation's service area: Cermak Road on the South extending to the Eisenhower expressway on the North, and Kostner Street on the West extending to California Street on the East. These boundaries differ slightly from Chicago's defined Community Area (number 29) of North Lawndale.

The information contained in this Databook makes it clear: diminished opportunities, both economic and educational, are having an adverse impact on the quality of life in North Lawndale and point to the need for substantial investments in the community. These investments should result in neighborhood improvements that insure to the benefit of current residents and to avert their displacement.

The data for this document was obtained from the 2005 - 2009 and 2015 - 2019 American Community Survey, 5-year estimates, U.S. Census Bureau;³ IPUMS National Historical Geographic Information System, version 16.0 (dataset)⁴; Chicago Data Portal, City of Chicago; Google Streetview, 2021; Chicago Health Atlas, Chicago Department of Public Health; Population Health Analytics Metrics Evaluation (PHAME) Center, UIC School of Public Health; Great Cities Institute Inventory; 2018 Guidestar Chicago MSA; Chicago Health Atlas, Chicago Department of Public Health; Population Health Analytics Metrics Evaluation (PHAME) Center, UIC School of Public Health; Cook County Assessor's Office 2021 Data; Chicago Data Portal, City of Chicago; Esri Business Analyst 2017 Retail Marketplace; Esri Business Analyst 2017; and U.S. Census Bureau, OnTheMap Application and LEHD Origin-Destination Employment Statistics (Beginning of Quarter Employment, 2nd Quarter of 2018). In all cases, as of this writing, the most recent available data was used, including that which was available from the 2020 Census data count via IPUMS NHGIS.

Highlights of Information from Lawndale Service Area Databook:

Population

Population changes are extremely important in examining community areas because it speaks to a community's desirability. **If people leave in large numbers, this generates a cascading series of effects:** vacant buildings due to less demand, a decreased tax base which drains a community of its economic base, decreased opportunities for business and thus business flight, and decreased allocation of public resources, such as public school funding, due to per capita budgeting models. As highlighted below, North Lawndale has experienced all those issues:

- **As of 2020, North Lawndale has an estimated 2,120 lots categorized as vacant land or minor improvement on vacant land.** This represents 7.8% of the total property in North Lawndale.
- There is an absence of nearly every category of retail goods and services available within North Lawndale, **leading to a leakage of an estimated \$124 million dollars from the community every year.** This lack of businesses leads to a large outflow of spending from the community, but also opportunities for new businesses that would be successful within the community.
- Much of this leakage is due to the **lack of an identifiable retail corridor or center** within the community. Residents largely have to leave the community to buy most goods and services.
- In 2017, North Lawndale's per capita **violent crime** was 30.9 incidents (per 1,000), which was **three times the rate of the city of Chicago** (10 per 1,000).

North Lawndale has experienced significant population loss, specifically within its Black population. **While the general trend in North Lawndale** has resulted in long-term losses in its Black population, it still remains a majority Black community. In 1980, North Lawndale had a Black population of 61,534 which dropped to 36,893 in 2020; a *loss of 24,641 residents* from that period.⁵

³ ACS data ranges are 5-year estimates of the average characteristics during the given time frame. They are not single year data points. For more information to understand ASC data, please see the following: https://www.psc.isr.umich.edu/dis/acs/handouts/Compass_Appendix.pdf

⁴ Steven Manson, Jonathan Schroeder, David Van Riper, Tracy Kugler, and Steven Ruggles. IPUMS National Historical Geographic Information System: Version 16.0 [dataset]. Minneapolis, MN: IPUMS. 2021. <http://doi.org/10.18128/D050.V16.0>

⁵ Wilson, Matt, & Linares, Alex. (2019). Fact Sheet: Black Population Loss in Chicago. The Great Cities Institute.

In the past decade, the white (non-Hispanic) and Hispanic or Latino population has increased in North Lawndale, especially among Latinos, but it has not been enough to offset the Black population loss that dates back to 1980. **This long-term trend of Black population loss affects the quality of life in North Lawndale as indicated by the long-term trend of increased vacant lots and business flight.** The recent 2020 decennial census shows that the trend of Black population is continuing, although at a slower rate. From 2010 to 2020:

- North Lawndale's *total population* decreased by 979 residents, from 44,434 to 43,455 residents.
- The Black (non-Hispanic) population of North Lawndale decreased by an estimated 3,981 residents. This represents a 9.7 percent decrease in the Black population of North Lawndale.
- The percentage of Black residents in the neighborhood decreased from 92 percent (40,874) to 84.9 percent (36,893).

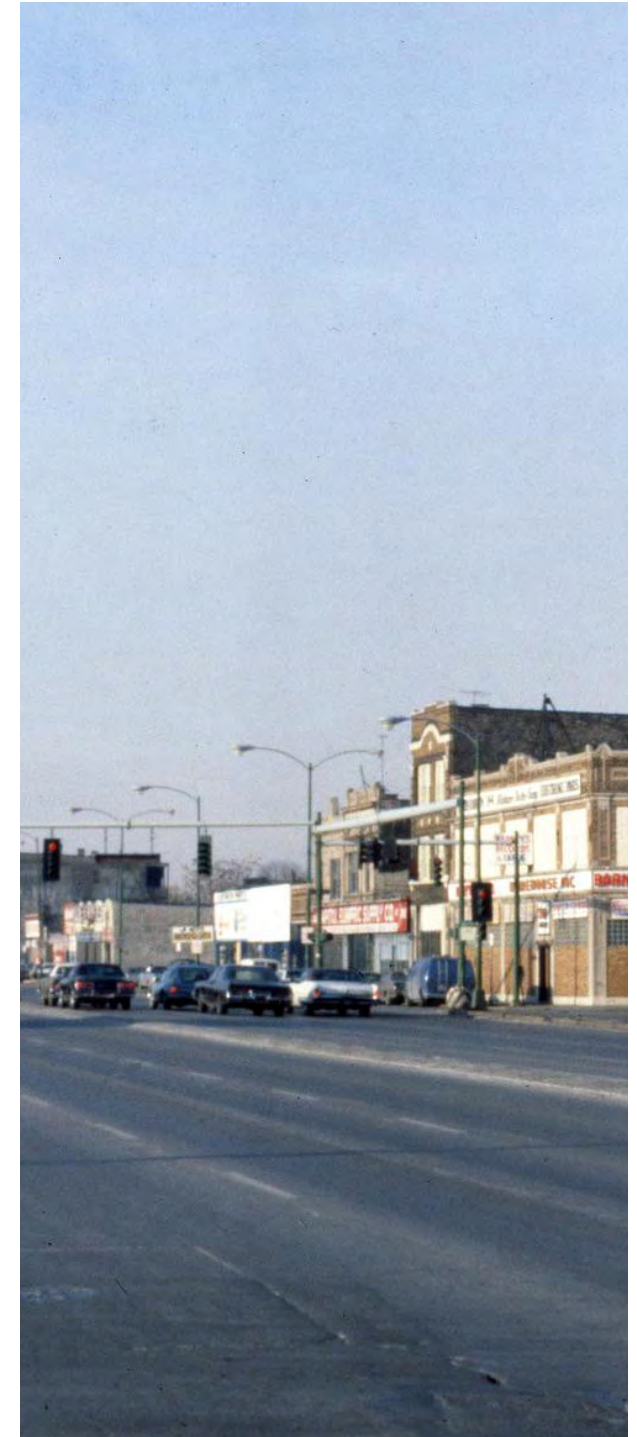
In the past 10 years, North Lawndale has seen an increase in Hispanic or Latino residents to about 10.6 percent of the population of North Lawndale. While the figure remains small when compared to the total population of Black residents, given that in 2010 the Hispanic Latino population was only 5.5 percent of the population, **this is evidence of a potential growing Latino enclave within North Lawndale.**

- From 2010 to 2020, the *overall population* in North Lawndale decreased by 2.2 percent. However, in that period, the population of Hispanic or Latino residents increased by an estimated 2,177 people in North Lawndale, an 89.8 percent increase.

The increase in the Latino population in North Lawndale is important due to two shared drivers between North and South Lawndale: the growing concerns of residential displacement due to new development initiatives and relatively similar economic hardship at the household level. The issue of displacement has been of concern for residents within both community areas as a result of the potential large-scale developments, such as the INVEST South/West initiative in North Lawndale and the El Paseo trail and St. Anthony Hospital campus in South Lawndale. Those developments may increase housing speculation in the area and displace current residents, instead of providing economic opportunities to existing residents. **Given these shared concerns, this presents an opportunity for collaboration on the need for large investments in affordable housing and municipal legislation that addresses housing speculation and increased property values due to development projects.**

Jobs and Employment

In North Lawndale, the data suggests that **high paying jobs are growing, but there is a local education mismatch that prevents North Lawndale residents from occupying the local higher paying jobs.** In a large and diverse regional economy such as Chicago, a case can be made that residents do not necessarily need to work in the same communities where they live. However, local jobs can be lucrative for residents because of shorter commute times. While it is often the case that local employers pitch their businesses as beneficial to the community since they serve as job providers for local residents, **most local residents of North Lawndale leave the community to work.**



- In 2018, only 492 residents both lived and worked within North Lawndale, **11,653 residents left the community to go to work.** An overwhelming number of **workers who lived in North Lawndale in 2018 identified as Black or African American (71.7 percent), yet the majority of jobs within the community were held by workers who identified as white (non-Hispanic) (55.3 percent).** In 2020, the white (non-Hispanic) population of North Lawndale was just 2.3 percent.

There are incentives for North Lawndale residents to work in North Lawndale as those job opportunities pay higher wages than the jobs held by local residents who are leaving the neighborhood to work. However, **there is an education mismatch between the high paying jobs in North Lawndale, and the adult educational levels in North Lawndale. In 2018:**

- **Those coming into the community to work tended to be paid more** (53.3 percent earn more than \$3,333 per month) than those leaving the community to work (23 percent earn more than \$3,333 per month).
- 9,002 people come from outside of North Lawndale to work at jobs within the community.
- 21.2 percent of jobs in North Lawndale were held by someone with a Bachelor's degree or advanced degree, however **just 12.7 percent of working residents had a bachelor's degree or advanced degree**, indicating an education mismatch between residents and the jobs that exist in the community.
- **The largest employing economic sector in North Lawndale was the Health Care and Social Assistance industry**, which provided 43.4 percent of the jobs in North Lawndale. However, **only 20.1 percent of North Lawndale residents worked in the Health Care and Social Assistance industry.**
- The second largest employing sector in North Lawndale was the **Educational Services industry**, in which **only 2.4 percent of North Lawndale's residents worked.**

The above figures point to an education mismatch between North Lawndale residents and the Healthcare and Social Assistance and Educational Services industries. There are some opportunities in North Lawndale to close this gap. Programs that target North Lawndale's population that have completed some college can be an opportunity to advance post-secondary education in North Lawndale. This could provide a path to completing their college education and access higher paying industries in North Lawndale for the 23.1 percent of North Lawndale's adult population who have completed some college.

It is important that these two industries with high-wage potential - health care and education - are sources of jobs for residents. If college completion programs are modeled to also allow for **vocational aspects** in these two industries, where residents are given internships in North Lawndale in healthcare and education, that can provide a high incentive for residents to boost their earnings potential long-term and develop a sense of community building.

North Lawndale has a sizable portion of its adult population work in industries with low-wage jobs. Given that 14 percent of adults in North Lawndale have not finished high school (in 2018), programs need to be developed to not only improve the high school completion rate, but to then have those residents also obtain vocational training to further improve their employment prospects.

- In 2018, 12.3 percent of North Lawndale’s residents worked in the Retail Trade industry and 11.6 percent worked in the Accommodation and Food Services industry.
- At the same time, 6.5 percent of jobs within North Lawndale were in construction, however only 1.8 percent of the residents of North Lawndale worked in that industry.

For working adults in the low wage sector, programs that target high school completion and transitions into vocational skill development is one strategy for increasing earnings potential. **The local mismatch of construction jobs in North Lawndale to that of residents that work in the construction industry can be an opportunity to push for programs within construction and other skilled trades.** However, a long-term strategy can decrease the chances that students will drop out of high school in the first place and instead obtain a post-secondary education. Given the significant rates of poverty, exposure to violent crime, and public health issues in North Lawndale, **one area of potential high impact is heavy investment in early child and elementary school education.** This is especially important given the large number of school closures in North Lawndale. That investment can include expansion of mental health services for at-risk youth, and wraparound services for those families that are below the poverty level, which lead to poorer health outcomes.

Household Income and Educational Attainment

Attainment of a high school diploma does not have the same value today as it did in the past. In a knowledge economy, if a community area makes gains in closing the high school graduation gap, **that does not necessarily translate into increases in median household income.** North Lawndale’s adult educational attainment, particularly in the rates of high school completion, has increased steadily but did not lead to an increase in median household income for residents. Since 1980, North Lawndale’s inflation-adjusted median household income is estimated to have *decreased by \$4,059.*

This points to the increased importance of post-secondary education in the global economy.

For example, in more affluent neighborhoods such as Kenwood and Lakeview, the adult population with a bachelor’s degree or more has increased since 1990 with corresponding increases in median household income.

- From 1980 to 2015-2019, the estimated median **household income in Lakeview has more than doubled** (from \$49,745 to \$105,687). In **Kenwood, the estimated median household income increased** from \$38,615 in 1980 to \$53,603 in 2015-2019. During that same period, **North Lawndale’s median household income is estimated to have decreased** from \$31,273 to \$27,214, a 13 percent decrease representing a loss of \$4,059.
- From 1990 to 2015-2019, **Lakeview’s population of age 25 and over with a bachelor’s**



degree or higher, increased from 53.1 percent to 81.5 percent. From 1990 to 2015-2019, **Kenwood's adult population with a bachelor's degree or higher increased from 38.2 percent to 58.9 percent.** In contrast, **North Lawndale's adult population with a bachelor's degree or higher increased from 3.9 percent in 1990 to 11.9 percent.**

- From 2015-2019, the proportion of **North Lawndale's adult population with a bachelor's degree is an estimated 8 percent, three times below Kenwood (27.3 percent), six times below Lakeview (47.4 percent), and three times below the city of Chicago (23.3 percent).**

While there have been gains in the number of adults with a bachelor's degree or higher in North Lawndale, it does not match that of a community area with median economic hardship such as Kenwood and was far behind a low economic hardship community area such as Lakeview. Further, **North Lawndale still has a much higher proportion of its adult population without completion of a high school degree when compared to other areas.** This is then reflected in differences in median income levels.

- In the period 2015-2019, **North Lawndale had a higher percentage of its population, age 25 and over with less than a high school degree (23.2%)** compared to Lakeview (2.1%), Kenwood (5.8%), and the City of Chicago (14.9%).
- From 2015-2019, **North Lawndale's median income (\$27,214) was 46.7% that of the city of Chicago's** median household income (\$58,247) representing a difference of \$31,033.
- In the same period, **North Lawndale's median household income (\$27,214) was nearly half that of Kenwood (\$53,603),** a community area that is in the median of economic hardship. This represents a difference in median household income of \$26,389 between North Lawndale and Kenwood.
- From 2015-2019, **Lakeview**, a community area that ranked 3rd lowest in economic hardship, had a median household income (\$105,687) from 2015-2019, an amount **approximately four times the median income of North Lawndale (\$27,214).**

From 2005-2009, various community areas saw a decrease in median household income, mostly due to the Great Recession. However, **while middle-income community areas such as Kenwood were able to bounce back to pre-recession levels, and more affluent areas were able to exceed the levels prior to the recession, North Lawndale and similar community areas with historic disadvantages such as Englewood, never recovered from the recession and actually fell behind pre-recession levels of median household income.** The increased percentages of adults with a bachelor's degree or higher in Kenwood and Lakeview can be a factor that leads those community areas to be more resilient to large economic changes. **The varying levels of educational attainment and income then tie into the potential for quality job opportunities and home ownership for North Lawndale residents.**

Housing

Rents in North Lawndale are relatively on par with that of the city of Chicago and most households within the neighborhood are renters. This is important since **the median household income of North Lawndale is about half that of the city of Chicago, which leads to higher rates of household renters experiencing housing cost burdens** in North Lawndale.

- In 2015-2019, North Lawndale's average median gross rent was \$985 which was only \$80 less than in Kenwood and \$127 less than in the city of Chicago.
- From 2005-2009 to 2015-2019, renter-occupied households who experienced a high housing burden (paying 50 percent or more of their income on rent) increased by 12.6 percent.

Home ownership in North Lawndale has continued to decline in the past 10 years.

- In 2015-2019, **75.8 percent of households in North Lawndale were renters**, higher than Kenwood (65.4 percent), Lakeview (61.8 percent), and the city of Chicago (55 percent).
- From 2005-2009 to 2015-2019, there were approximately **771 less owner-occupied housing units (with a mortgage) representing a decrease of 20.2 percent**. This is higher than the city of Chicago's decline of owner-occupied housing units of 15.9 percent.
- From 2005-2009 to 2015-2019, there were approximately 603 fewer household owners in North Lawndale paying 50 percent or more of their income on housing costs, a decrease of 57.5 percent. This decrease may reflect that those homeowners experiencing very high housing burden in the 2005-2009, may no longer own their homes in the 2015-2019 period.
- In 2015-2019, **North Lawndale's households with a mortgage paying 50 percent or more of their income on housing costs was 23.8 percent**, higher than Kenwood (10 percent), Lakeview (9.8 percent), and the city of Chicago (13.6 percent).
- In 2015-2019, North Lawndale's **households with a mortgage paying 30 to 49.9 percent of their income on housing costs was (26.4 percent)**, higher than Kenwood (16.1 percent), Lakeview (12.6 percent), and Englewood (20 percent).

The consistently higher rates of homeowners who experience a high housing burden in North Lawndale is problematic since the recent pandemic could prove to be a similar economic shock, such as the Great Recession, that would mostly affect community areas such as North Lawndale that are already experiencing high economic hardship. **Sustained building vacancy is correlated with higher rates of violent crime which points to making affordable housing a vital strategy for neighborhood vitality that also prevents social disorganization and thus crime.**

Poverty and Crime

Academics have studied how racial and ethnic segregation at the city level, along with concentrated neighborhood level disadvantages such as residential instability, poverty, and joblessness are causal to increased violent-crime rates at the neighborhood level.⁶ Others have emphasized crime within a broken windows framework, that vacant lots and other indicators of disorder send signals to potential criminals that there is a lack of collective efficacy in an area.⁷

- In 2015-2019, **North Lawndale had 38.8 percent of its households below the poverty rate, more than 4 times that of Lakeview (8.0 percent), and double the rate of the city of**



⁶ Peterson, R. D., & Krivo, L. J. (2010). Divergent Social Worlds: Neighborhood Crime and the Racial-Spatial Divide. Russell Sage Foundation. p. 73.

⁷ Kondo, M. C., Andreyeva, E., South, E. C., MacDonald, J. M., & Branas, C. C. (2018). Neighborhood Interventions to Reduce Violence. Annual Review of Public Health, 39(1), 253–271. <https://doi.org/10.1146/annurev-publhealth-040617-014600>

Chicago (18.4 percent).

- In 2017, North Lawndale had **an estimated 2,120 lots categorized as vacant land or minor improvement on vacant land** which represents 7.8% of the total property in North Lawndale.

Given North Lawndale's higher rates of housing burden, poverty, and the area's large number of vacant lots and buildings, **the violent crime rates in North Lawndale follow those same patterns of increased violent crime rates.** In 2017 North Lawndale had a:

- **Per capita violent crime rate 3 times the rate of the city of Chicago.**
- Per capita violent crime of 30.9 incidents per 1,000, which was **three times the rate of Kenwood** (10.8 per 1,000). Per capita violent crime **more than eight times the per capita violent crime of Lakeview** (3.8 per 1,000).
- Per capita **violent crime comparable to that of Englewood** (30.7 per 1,000), **a community area that ranked third highest in economic hardship.**

The issue of violent crime can be viewed as an outcome of the various socioeconomic issues described in North Lawndale so far. **Potential solutions then need to be addressed holistically versus attempting to adopt a single policy issue in an attempt to decrease violent crime.** Addressing the issue of crime can begin by investing more resources to improve educational attainment and employment opportunities in an area with high economic burden. Over time, those investments can have the consequence of alleviating the concentrated poverty that exists in North Lawndale. Long-term change means viewing violent crime from a preventative perspective where large investments are made in early childhood education. Those investments can close the school readiness gaps that already begin to accelerate across class lines, an issue given North Lawndale's higher poverty rate, as children first enter school. Those educational investments can also mean greater access to mental health services for youth.

Another issue specific to North Lawndale is its large number of vacant lots. Operationalizing vacant lots to decrease building vacancy via home ownership can have a significant impact in decreasing signals for social disorganization. Since North Lawndale's renters and owners experience higher housing burden compared to other community areas, increasing the building stock can also have the effect of improving affordability. Large investments in physical infrastructure, such as street lighting and parks, around high risk areas of violent crime can also act as possible deterrents. **Since the issue of violent crime is a complex issue, the policy solutions, from investment in adult and early childhood education to development of vacant lots and infrastructure, would need to be thought of via an integrated approach of investing in both people and place.**

Health Factors

There has been a growing trend among academics in the field of Public Health to examine health issues beyond an individual person's health but to also examine health disparities across neighborhoods. This is due to **renewed interest in viewing individual health issues in the context of social inequalities**

that exist among places. This has led researchers to examine **how public health outcomes are related to policy issues that have an effect on an individual's health outcomes.**

Examples include how a physical environment has an effect on access to high-quality foods. There have also been studies that have examined the relationship between the physical environment and its effects on the increased likelihood of obesity.

- As of 2018, **North Lawndale has much lower access to fruits and vegetables** (49.8 percent of adults) compared to Lake View (82.9 percent) and Chicago as a whole (67.8 percent). From 2015-2019, North Lawndale had a much higher percentage of households receiving SNAP benefits (44.6 percent of households) than Lake View (3.19 percent), Kenwood (17.59 percent), and the city (18.26 percent), indicating disparities in access to adequate and healthy food sources.
- In 2018, 9 percent of North Lawndale adults were diabetic while just 4.9 percent in Kenwood and 6.6 percent in Lake View were, however in 2017, **North Lawndale residents were nearly three times more likely to die from diabetes-related causes than (88.8 deaths per 100,000 residents) Lake View residents (26.5 deaths per 100,000 residents).**
- In 2018, 29.7 percent of North Lawndale adults suffered from hypertension, slightly more than the citywide average of 27.7 percent, however in 2017, **North Lawndale residents were much more likely to die from hypertension related diseases such as heart disease** (251.7 deaths per 100,000) than residents in Lake View (97.7 deaths per 100,000).
- In the period of 2013-2017, **North Lawndale had slightly less cancer diagnoses** (601 cases per 100,000 residents) than Lake View (620 cases per 100,000 residents), however in 2017, **the mortality rate from cancer in North Lawndale was much higher** (254 deaths per 100,000 residents) than in Lake View (94.6 deaths per 100,000 residents) in 2017.

The data on diabetes, hypertension, cancer diagnoses, are concerning in that while the diagnoses of those conditions in North Lawndale are not substantially higher, the mortality rates are, when compared to a more affluent community area such as Lakeview. **This points to large discrepancies in access to quality healthcare.**

- From 2015-2019, the **uninsured rate in North Lawndale (10.52 percent) is nearly three times higher than in Lake View (3.93 percent)** and nearly twice that of Kenwood (6.35 percent).

Another concern within the field of public health is the differing proximity to potential environmental hazards. In 2020, Air particulate matter was slightly higher (9.567 ppm) compared to the citywide average (9.429), however **air pollution levels were significantly higher in North Lawndale compared to wealthier areas like Lake View** (9.195) due to the surrounding industrial areas.

Prior sections covered the issues of concentrated poverty and its relationship to other health concerns such as violent crime. An interrelated issue is that of **drug-induced deaths, which is a**



glaring issue in North Lawndale.

- In 2017, **North Lawndale had a much higher rate of drug-induced deaths** (62.8 deaths per 100,000 residents) **and drug-overdose deaths** (60.8 deaths per 100,000 residents), nearly twice that of Englewood (33.4 and 32.7 respectively), nearly six times that of Kenwood (11.4 and 11.4), and nearly **twelve times that of Lake View** (5.4 and 5.4)

The much higher rates of drug-induced and drug-overdose deaths in North Lawndale, even when compared to Englewood that has ranked higher on economic hardship, points to the potential that those deaths may be partially attributed to individuals that go into North Lawndale to purchase illegal drugs.

Other Promising Practices for Consideration:

There are two policy frameworks to utilize for creating recommendations: 1) place-based policy that aims to alleviate physical issues and create spaces of greater investment, and 2) people-centric policy that aims to provide support directly to people to reduce neighborhood disadvantages. Given the needs for North Lawndale as seen in the data, a holistic approach using both frameworks (people and place) is recommended.

- **Alleviating physical disorder;**
 - Investing heavily in investment in public infrastructure projects, which are correlated as protective factors against violent crime such as street lighting, illuminated walk/don't walk signs, painted crosswalks, public transportation, and maintaining vacant lots, which are correlated as protective factors against violent crime.⁸
 - Adding parks and tree- canopy cover in high- risk, violent areas.⁹
 - Incentivizing large-scale development to operationalize vacant lots and decrease building vacancy via home ownership.¹⁰
 - Developing community institutions and neighborhoods.
 - Strategies include reducing economic segregation via land trusts and mixed-income housing via vouchers plus counseling,
 - Using local-anchor institutions and workforce development to support low-income residents,
 - Increasing the role of local religious institutions,
 - Reconnecting disconnected youth through more mentoring programs, and
 - Creating programs that work to give residents agency in affecting local policy.
- **Investing in early childhood;**
 - Early childhood education holds potential for high long-term impact. A study found

8 Culyba, A. J., Jacoby, S. F., Richmond, T. S., Fein, J. A., Hohl, B. C., & Branas, C. C. (2016). Modifiable Neighborhood Features Associated With Adolescent Homicide. *JAMA Pediatrics*, 170(5), 473–480. <https://doi.org/10.1001/jamapediatrics.2015.4697>

9 Kondo, M. C., South, E. C., Branas, C. C., Richmond, T. S., & Wiebe, D. J. (2017). The Association Between Urban Tree Cover and Gun Assault: A Case-Control and Case-Crossover Study. *American Journal of Epidemiology*, 186(3), 289–296. <https://doi.org/10.1093/aje/kwx096>

10 Branas, C. C., Rubin, D., & Guo, W. (2012). Vacant Properties and Violence in Neighborhoods. *ISRN Public Health*, 2012, 1–9. <https://doi.org/10.5402/2012/246142>

evidence for long-term gains, such as higher educational attainment and income, and lower rates of incarceration for adults who did attend preschool.¹¹

- Strategies for early childhood education include increasing access to high- quality early childhood education with instructional and emotional support. High quality can mean access to highly educated teachers and favorable child-to-staff ratios.¹²
- **Promoting Economic security for families;**
 - Low-income and poverty can affect the educational outcomes of children of poorer families that then increase income gaps into adulthood.¹³ Additionally, low-income families are exposed to more food insecurity and harmful stress, which particularly affects children.
 - Strategies include programs for decreasing food insecurity for low-income children, programs that improve economic outcomes of working families and improve education across the board, working with community colleges to specifically target disconnected youth.
- **Targeting elementary school students from kindergarten to 8th grade.**
 - Strategies include increasing teacher quality in low-income schools, offering school choice to low-income households to high quality schools, wrap-around services, tutoring, supplementing with extracurriculars, and improved school-to- work programs.¹⁴

The following pages of this Databook provide detailed information on the North Lawndale services area regarding demographics, educational attainment, educational assets, housing, ratio of income to poverty level, crime, zoning, streetscape conditions, transportation access, transportation mode and travel times, environmental conditions, parks and open space, cultural assets, non-profit organizations, health indicators, vacant land, and taxpayers.



11 AJ Reynolds et al., "School-Based Early Childhood Education and Age-28 Well-Being: Effects by Timing, Dosage, and Subgroups," *Science* 333(6040):360–364 (2011)

12 WT Gormley, Jr., D Phillips and T Gayer, "Preschool Programs Can Boost School Readiness," *Science* 320:1723-24 (2008).

13 RD Putnam, *Our Kids* (NY: Simon & Schuster, 2015).

14 Closing the Opportunity Gap: A Project of the Saguaro Seminar. (2016). Harvard Kennedy School, the Saguaro Seminar

Contents

1	Introduction	38	Zoning
2	Demographics	39	Streetscape Conditions
4	Employment - All Primary Jobs	40	Transportation Access
8	Employment - Goods Producing Jobs	41	Transportation Mode and Travel Times
12	Employment - Trade, Transportation, and Warehousing Jobs	42	Environmental Conditions
16	Employment - Inflow/Outflow Statistics	43	Parks and Open Space
18	Top 25 ZIP Codes where North Lawndale Residents Work	44	Vacant Land
19	Top 25 ZIP Codes where North Lawndale Workers Live	45	Taxpayer Analysis
20	Employment Distance-Direction Analysis	46	Cultural Assets
21	Household Income	47	Non-Profit Organizations
23	Educational Attainment	50	Retail Marketplace Profile
25	Educational Assets	52	Types of Businesses by NAICS Codes
26	Housing	53	Business Inventory
30	Ratio of Income to Poverty Level		
31	Crime		
32	Health Indicators		

Introduction

The Lawndale Service Area Databook provides a basis to identify community strengths as well as various threats, challenges and opportunities that inevitably impacts policy decisions. This document provides data to inform and shape these policies and amplify the community's voice in public dialogue about the future development and growth of North Lawndale.

This Databook provides information on demographics, educational attainment, educational assets, housing, ration of income to poverty level, crime, zoning, streetscape conditions, transportation access, transportation mode and travel times, environmental conditions, parks and open space, cultural assets, non-profit organizations, health indicators, vacant land, and taxpayers.

Data Boundaries

The data on the following pages has been assembled from the latest available sources to document the current state of the North Lawndale service area of the Lawndale Christian Development Corporation (LCDC). A comparison has been made where data is available to other Chicago community areas and the city as a whole to put the data in perspective and show where there are differences and disparities between the communities.

Unless otherwise noted, this data is for the Lawndale Christian Development Corporation (LCDC) service area boundaries, compiled from census tracts defined by the given project boundaries: Cermak Road on the south to the Eisenhower on the north and Kostner Street on the west to California Avenue on the east.

These boundaries differ slightly from the defined Community Area 29 of North Lawndale.

Comparison Communities

In 2017, the Great Cities Institute released the Economic Hardship Index that ranked Chicago Community Areas based on highest to lowest economic hardship. In that report, North Lawndale ranked 13th highest in economic hardship.

The Economic Hardship Index was used to compare North Lawndale's study area to other community areas in Chicago that ranked low, medium, and high in economic hardship. North Lawndale was compared to Englewood (ranked 3rd highest in economic hardship), Kenwood (ranked 55th in economic hardship), Lakeview (ranked 75th in economic hardship), and the City of Chicago as a whole.

Demographics

Total Population by Race and Ethnicity in North Lawndale and Comparison Communities, 2010 to 2020 Decennial Census								
	North Lawndale		Englewood		Kenwood		Lakeview	
	2010	2020	2010	2020	2010	2020	2010	2020
Total Population	44,434	43,455	30,654	24,369	17,841	19,116	94,368	103,050
Black or African American not Hispanic	40,874	36,893	29,847	21,941	12,821	12,965	3,651	3,917
Hispanic or Latino	2,423	4,600	325	1,605	542	763	7,198	9,340
White not Hispanic or Latino	634	993	105	179	2,942	3,121	75,845	77,133
Asian not Hispanic or Latino	78	92	34	27	973	1,364	5,653	7,717

Population Percent Change by Race and Ethnicity in North Lawndale and Comparison Communities, 2010 to 2020 Decennial Census					
	Total Population Percent change	Black or African American not Hispanic	Hispanic or Latino	White not Hispanic or Latino	Asian not Hispanic or Latino
North Lawndale	-2.2%	-9.7%	89.8%	56.6%	17.9%
Englewood	-20.5%	-26.5%	393.8%	70.5%	-20.6%
Kenwood	7.1%	1.1%	40.8%	6.1%	40.2%
Lakeview	9.2%	7.3%	29.8%	1.7%	36.5%

Population

- From 2010 to 2020, North Lawndale's total population decreased by 979 residents, from 44,434 to 43,455 residents.
- The Black (non-Hispanic) population of North Lawndale decreased by an estimated 3,981 residents from 2010 to 2020. This represents a 9.7 percent decrease in the Black population of North Lawndale.
- Black residents made up 84.9 percent (36,893) of the neighborhood's population in 2020, a decrease from 92 percent (40,874) in the 2010 period.

Population Change

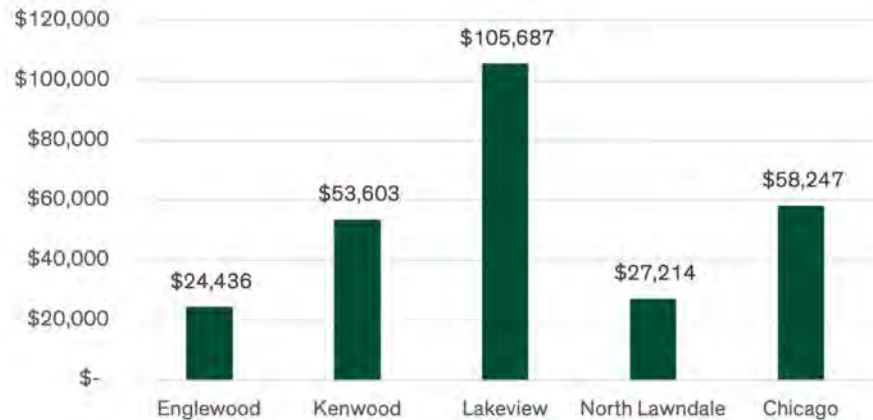
- The population change in North Lawndale from 2010 to 2020 represents a -2.2%. While this is a decrease, the population change was more stable than in Englewood which decreased by -20.5%. This is significant as we have seen there are comparable socio-economic indicators among the two community areas.
- From 2010 to 2020, the population of Hispanic or Latino residents increased by an estimated 2,177 people in North Lawndale, an 89.8 percent increase.
- In 2020, Latinos made up 10.6 percent of the population of North Lawndale, where in 2010 Latinos made up 5.5 percent of the population.

Source: Steven Manson, Jonathan Schroeder, David Van Riper, Tracy Kugler, and Steven Ruggles. IPUMS National Historical Geographic Information System: Version 16.0 [dataset]. Minneapolis, MN: IPUMS. 2021. <http://doi.org/10.18128/D050.V16.0>

Demographics (continued...)

Median Household Income in North Lawndale and Chicago, 2005 - 2009 to 2015 - 2019					
North Lawndale		Chicago		North Lawndale	Chicago
2009	2019	2009	2019	% Change	% Change
\$25,319	\$27,214	\$55,879	\$58,247	7.5%	4.2%

Median Household Income in North Lawndale and Comparison Communities, 2015-2019

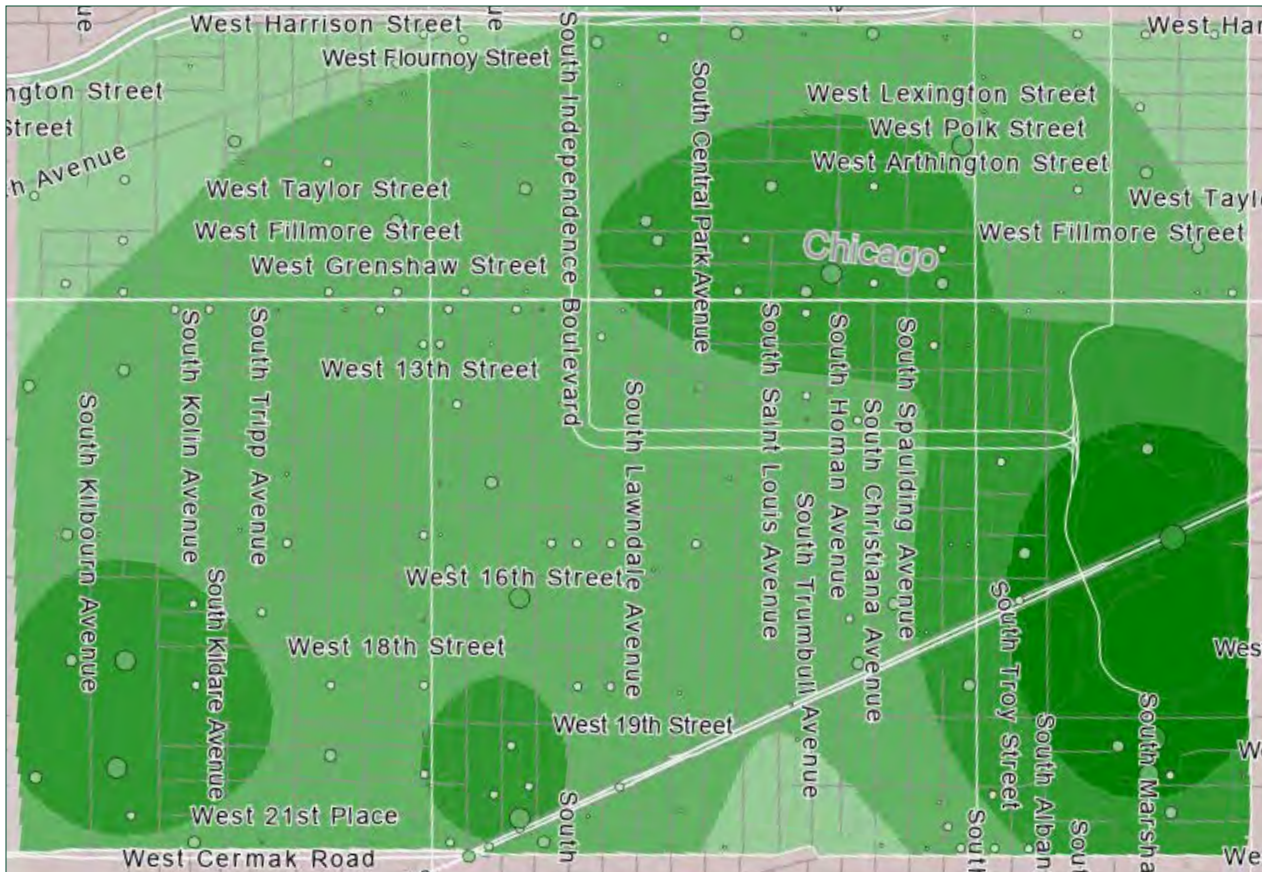


Income

- The median household income in North Lawndale from 2015-2019 is \$27,214, 47 percent of the median household income of Chicago (\$58,247).
- North Lawndale's average median household income is \$26,389 less than Kenwood, a community area that is in the median of economic hardship. This is comparable to the difference between North Lawndale and the City of Chicago (\$31,033).
- Lakeview, a community area that ranked 3rd lowest in economic hardship, has a median household income (\$105,687) that is approximately 4 times the median income of North Lawndale (\$27,214).

2005 - 2009 and 2015 - 2019 American Community Survey, 5-year estimates; U.S. Census Bureau

2018 Employment – All Primary Jobs



Location of All Primary Jobs

Jobs within the neighborhood are concentrated around the south end of Douglass Park, along Roosevelt Road and Ogden Avenue, and in the industrial area in the southwest part of the neighborhood.



Source: U.S. Census Bureau, OnTheMap Application and LEHD Origin-Destination Employment Statistics (Beginning of Quarter Employment, 2nd Quarter of 2018).

2018 Employment – All Primary Jobs

Total Private Primary Jobs				
	Workers		Residents	
	Count	Share	Count	Share
Total Private Primary Jobs	9,494	100.0%	12,145	100.0%

Jobs by Worker Age, 2018				
	Workers		Residents	
	Count	Share	Count	Share
Age 29 or younger	1,781	18.8%	3,586	29.5%
Age 30 to 54	5,467	57.6%	6,475	53.3%
Age 55 or older	2,246	23.7%	2,084	17.2%

Jobs by Earnings				
	Workers		Residents	
	Count	Share	Count	Share
\$1,250 per month or less	870	9.2%	3,205	26.4%
\$1,251 to \$3,333 per month	3,692	38.9%	6,126	50.4%
More than \$3,333 per month	4,932	51.9%	2,814	23.2%

Jobs by Worker Educational Attainment*				
	Workers		Residents	
	Count	Share	Count	Share
Less than high school	1,502	15.8%	1,696	14.0%
High school or equivalent, no college	1,885	19.9%	2,518	20.7%
Some college or Associate degree	2,315	24.4%	2,804	23.1%
Bachelor's degree or advanced degree	2,011	21.2%	1,541	12.7%
Educational attainment not available (workers aged 29 or younger)	1,781	18.8%	3,586	29.5%

* Educational Attainment is only produced for workers aged 30 and over.

All Primary Jobs

- There are 9,494 total jobs in North Lawndale, however residents of North Lawndale hold a total of 12,145 jobs.

Jobs Held by Worker Age

- More jobs within North Lawndale are held by older workers 30 years old or older, indicating that many younger residents with jobs are leaving the community for work.

Jobs by Earnings

- Over half of jobs (51.9 percent) in North Lawndale pay more than \$3,333 per month, however most working residents (76.8 percent) are paid \$3,333 or less per month.

Jobs by Worker Educational Attainment

- 21.2 percent of jobs in North Lawndale are held by someone with a Bachelor's degree or advanced degree, however just 12.7 percent of working residents have a Bachelor's degree or advanced degree.

Source: U.S. Census Bureau, OnTheMap Application and LEHD Origin-Destination Employment Statistics (Beginning of Quarter Employment, 2nd Quarter of 2018).

2018 Employment – All Primary Jobs

Jobs by NAICS Industry Sector				
	Workers		Residents	
	Count	Share	Count	Share
Agriculture, Forestry, Fishing and Hunting	0	0.0%	3	0.0%
Mining, Quarrying, and Oil and Gas Extraction	0	0.0%	3	0.0%
Utilities	0	0.0%	31	0.3%
Construction	614	6.5%	224	1.8%
Manufacturing	1,133	11.9%	982	8.1%
Wholesale Trade	215	2.3%	392	3.2%
Retail Trade	320	3.4%	1,497	12.3%
Transportation and Warehousing	272	2.9%	884	7.3%
Information	21	0.2%	189	1.6%
Finance and Insurance	39	0.4%	392	3.2%
Real Estate and Rental and Leasing	45	0.5%	232	1.9%
Professional, Scientific, and Technical Services	475	5.0%	570	4.7%
Management of Companies and Enterprises	1	0.0%	119	1.0%
Administration & Support, Waste Management and Remediation	438	4.6%	1,867	15.4%
Educational Services	1,229	12.9%	297	2.4%
Health Care and Social Assistance	4,118	43.4%	2,447	20.1%
Arts, Entertainment, and Recreation	0	0.0%	177	1.5%
Accommodation and Food Services	305	3.2%	1,404	11.6%
Other Services (excluding Public Administration)	269	2.8%	435	3.6%
Public Administration	0	0.0%	0	0.0%

Jobs by Industry Sector

- The largest employment sectors within North Lawndale are Health Care and Social Assistance (43.4 percent), Educational Services (12.9 percent), and Manufacturing (11.9 percent).
- Residents work in a wider array of industry sectors than jobs located within the community, with the largest categories being Health Care and Social Assistance (20.1 percent), Retail Trade (12.3 percent), and Accommodation and Food Services (11.6 percent).

Source: U.S. Census Bureau, OnTheMap Application and LEHD Origin-Destination Employment Statistics (Beginning of Quarter Employment, 2nd Quarter of 2018).

2018 Employment – All Primary Jobs

Jobs by Worker Race				
	Workers		Residents	
	Count	Share	Count	Share
White Alone	5,248	55.3%	2,811	23.1%
Black or African American Alone	3,365	35.4%	8,704	71.7%
American Indian or Alaska Native Alone	72	0.8%	81	0.7%
Asian Alone	652	6.9%	334	2.8%
Native Hawaiian or Other Pacific Islander Alone	18	0.2%	24	0.2%
Two or More Race Groups	139	1.5%	191	1.6%

Jobs by Worker Ethnicity				
	Workers		Residents	
	Count	Share	Count	Share
Not Hispanic or Latino	6,798	71.6%	10,666	87.8%
Hispanic or Latino	2,696	28.4%	1,479	12.2%

Jobs by Worker Sex				
	Workers		Residents	
	Count	Share	Count	Share
Male	4,289	45.2%	5,389	44.4%
Female	5,205	54.8%	6,756	55.6%

Jobs by Worker Race

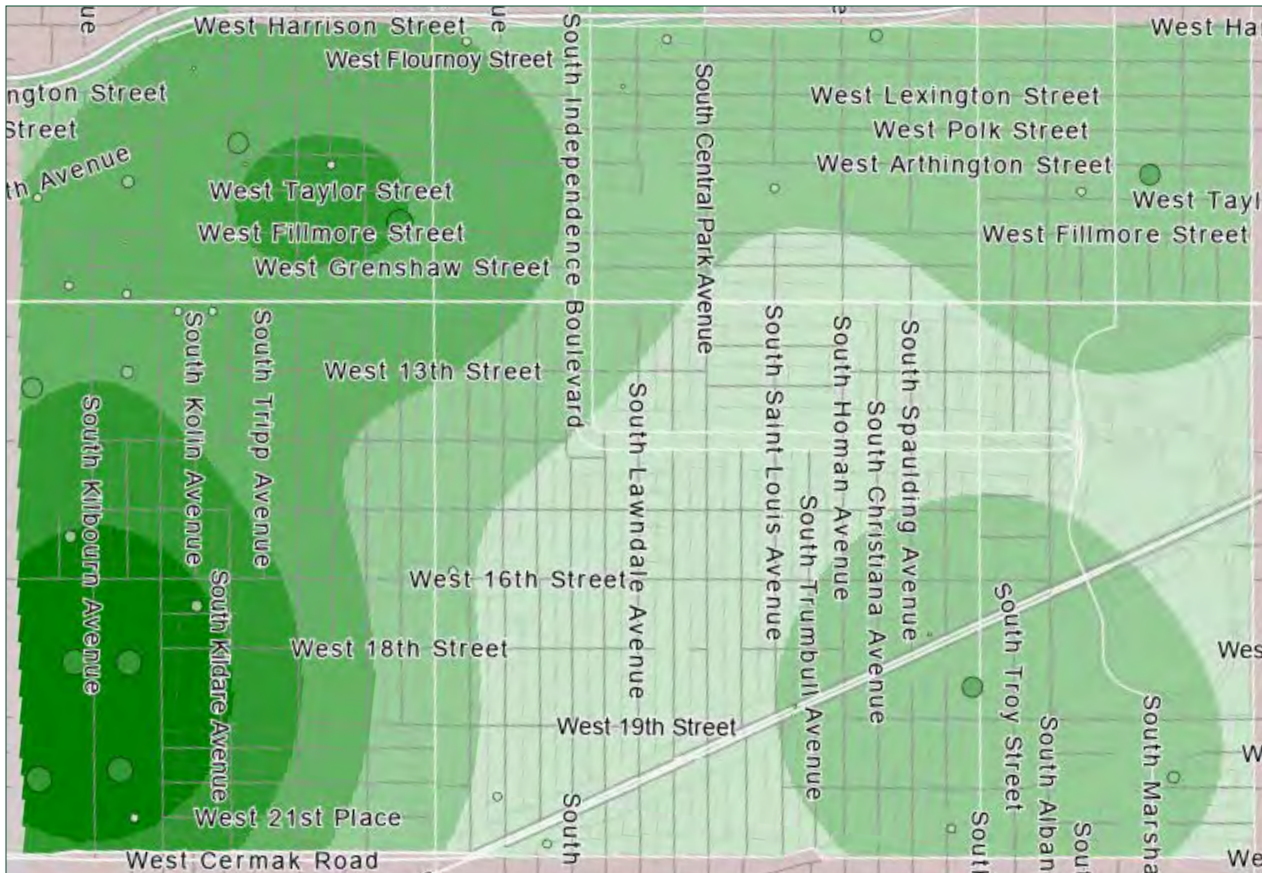
- Despite an overwhelming amount of workers living in North Lawndale being Black or African American (71.7 percent), the majority of jobs within the community are held by workers who identify as White Alone (55.3 percent).

Jobs by Worker Ethnicity

- However when accounted for by ethnicity, a higher portion of jobs are held by individuals who identify as Hispanic or Latino (28.4 percent) than residents who are working (12.2 percent)

Source: U.S. Census Bureau, OnTheMap Application and LEHD Origin-Destination Employment Statistics (Beginning of Quarter Employment, 2nd Quarter of 2018).

2018 Employment – Goods Producing Jobs



Goods producing jobs include the Agriculture, Forestry, Fishing and Hunting; Mining, Quarrying, and Oil and Gas Extraction; Construction; and Manufacturing NAICS Industry Sectors.

Location of Goods Producing Jobs

Goods producing jobs within the community are primarily located in the southwest part of the neighborhood centering on Kilbourn Avenue near Cermak Road, near Pulaski Road and Fillmore Street, along with smaller concentrations in the northeast and southeast areas.



Source: U.S. Census Bureau, OnTheMap Application and LEHD Origin-Destination Employment Statistics (Beginning of Quarter Employment, 2nd Quarter of 2018).

2018 Employment – Goods Producing Jobs

Total Private Primary Jobs				
	Workers		Residents	
	Count	Share	Count	Share
Total Private Primary Jobs	1,747	100.0%	1,212	100.0%

Jobs by Worker Age				
	Workers		Residents	
	Count	Share	Count	Share
Age 29 or younger	238	13.6%	207	17.1%
Age 30 to 54	998	57.1%	729	60.1%
Age 55 or older	511	29.3%	276	22.8%

Jobs by Earnings				
	Workers		Residents	
	Count	Share	Count	Share
\$1,250 per month or less	92	5.3%	124	10.2%
\$1,251 to \$3,333 per month	582	33.3%	620	51.2%
More than \$3,333 per month	1,073	61.4%	468	38.6%

Jobs by Worker Educational Attainment*				
	Workers		Residents	
	Count	Share	Count	Share
Less than high school	485	27.8%	240	19.8%
High school or equivalent, no college	407	23.3%	299	24.7%
Some college or Associate degree	404	23.1%	301	24.8%
Bachelor's degree or advanced degree	213	12.2%	165	13.6%
Educational attainment not available (workers aged 29 or younger)	238	13.6%	207	17.1%

* Educational Attainment is only produced for workers aged 30 and over.

Source: U.S. Census Bureau, OnTheMap Application and LEHD Origin-Destination Employment Statistics (Beginning of Quarter Employment, 2nd Quarter of 2018).

2018 Employment – Goods Producing Jobs

Jobs by NAICS Industry Sector				
	Workers		Residents	
	Count	Share	Count	Share
Agriculture, Forestry, Fishing and Hunting	0	0%	3	0.2%
Mining, Quarrying, and Oil and Gas Extraction	0	0%	3	0.2%
Construction	614	35.1%	224	18.5%
Manufacturing	1,133	64.9%	982	81.0%

Source: U.S. Census Bureau, OnTheMap Application and LEHD Origin-Destination Employment Statistics (Beginning of Quarter Employment, 2nd Quarter of 2018).

2018 Employment – Goods Producing Jobs

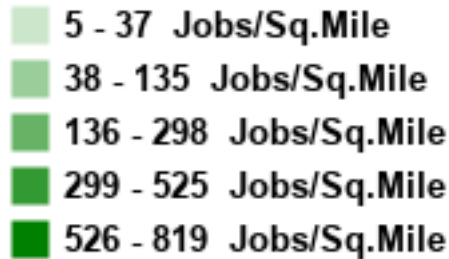
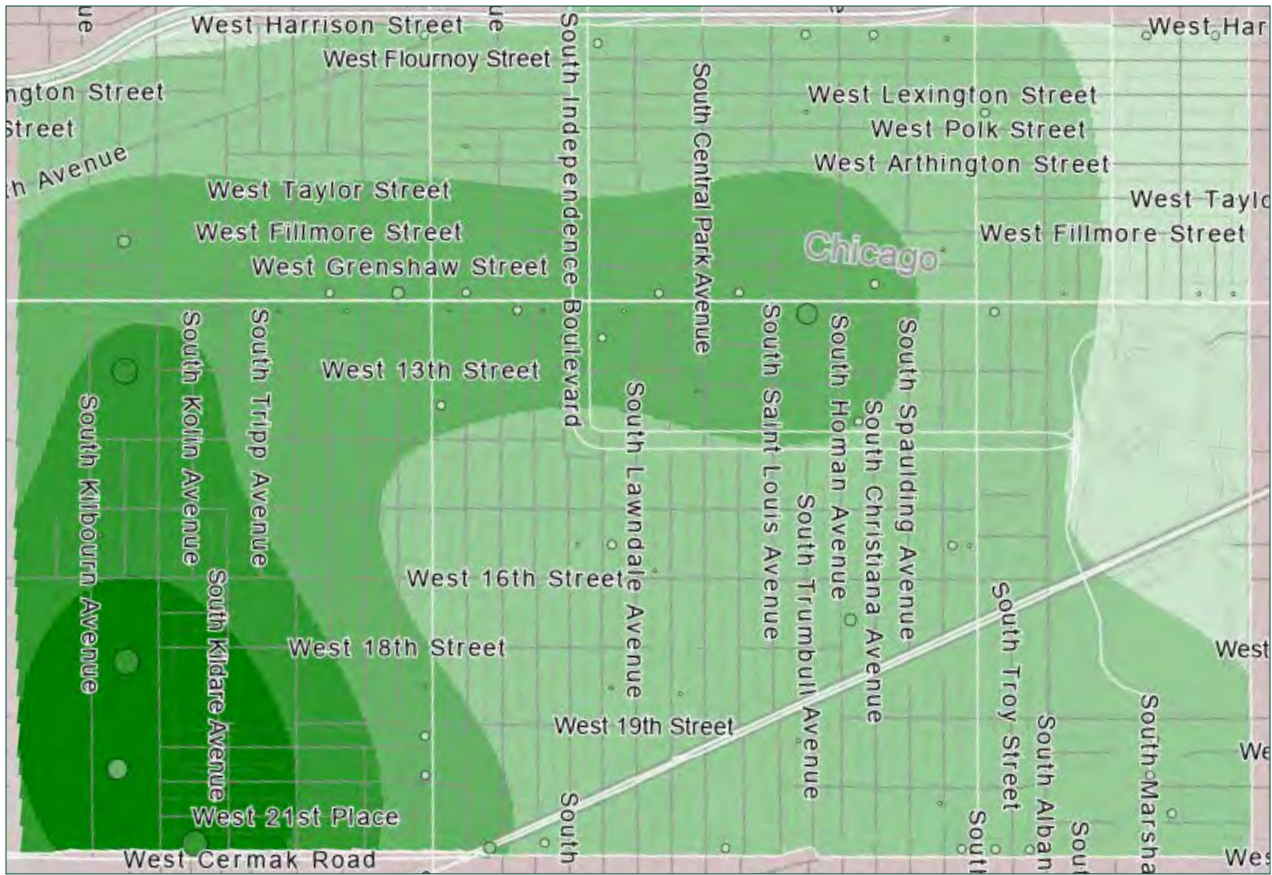
Jobs by Worker Race				
	Workers		Residents	
	Count	Share	Count	Share
White Alone	1,396	79.9%	474	39.1%
Black or African American Alone	260	14.9%	684	56.4%
American Indian or Alaska Native Alone	20	1.1%	10	0.8%
Asian Alone	44	2.5%	28	2.3%
Native Hawaiian or Other Pacific Islander Alone	6	0.3%	3	0.2%
Two or More Race Groups	21	1.2%	13	1.1%

Jobs by Worker Ethnicity				
	Workers		Residents	
	Count	Share	Count	Share
Not Hispanic or Latino	846	48.4%	934	77.1%
Hispanic or Latino	901	51.6%	278	22.9%

Jobs by Worker Sex				
	Workers		Residents	
	Count	Share	Count	Share
Male	1,383	79.2%	859	70.9%
Female	364	20.8%	353	29.1%

Source: U.S. Census Bureau, OnTheMap Application and LEHD Origin-Destination Employment Statistics (Beginning of Quarter Employment, 2nd Quarter of 2018).

2018 Employment – Trade, Transportation, and Warehousing Jobs



Trade, transportation, and warehousing jobs include the Utilities, Wholesale Trade, Retail Trade, and Transportation and Warehousing NAICS Industry Sectors.

Location of Trade, Transportation, and Warehousing Jobs

Trade, transportation, and warehousing jobs within the community are primarily located in the southwest part of the neighborhood centering on Kilbourn Avenue near Cermak Road and minor concentrations along Roosevelt Road.

Source: U.S. Census Bureau, OnTheMap Application and LEHD Origin-Destination Employment Statistics (Beginning of Quarter Employment, 2nd Quarter of 2018).

2018 Employment – Trade, Transportation, and Warehousing Jobs

Total Private Primary Jobs				
	Workers		Residents	
	Count	Share	Count	Share
Total Private Primary Jobs	807	100.0%	2,804	100.0%

Jobs by Worker Age				
	Workers		Residents	
	Count	Share	Count	Share
Age 29 or younger	172	21.3%	1,027	36.6%
Age 30 to 54	420	52.0%	1,326	47.3%
Age 55 or older	215	26.6%	451	16.1%

Jobs by Earnings				
	Workers		Residents	
	Count	Share	Count	Share
\$1,250 per month or less	143	17.7%	775	27.6%
\$1,251 to \$3,333 per month	355	44.0%	1,410	50.3%
More than \$3,333 per month	309	38.3%	619	22.1%

Jobs by Worker Educational Attainment*				
	Workers		Residents	
	Count	Share	Count	Share
Less than high school	136	16.9%	363	12.9%
High school or equivalent, no college	174	21.6%	575	20.5%
Some college or Associate degree	190	23.5%	585	20.9%
Bachelor's degree or advanced degree	135	16.7%	254	9.1%
Educational attainment not available (workers aged 29 or younger)	172	21.3%	1,027	36.6%

* Educational Attainment is only produced for workers aged 30 and over.

Source: U.S. Census Bureau, OnTheMap Application and LEHD Origin-Destination Employment Statistics (Beginning of Quarter Employment, 2nd Quarter of 2018).

2018 Employment – Trade, Transportation, and Warehousing Jobs

Jobs by NAICS Industry Sector				
	Workers		Residents	
	Count	Share	Count	Share
Utilities	0	0%	31	1.1%
Wholesale Trade	215	26.6%	392	14.0%
Retail Trade	320	39.7%	1,497	53.4%
Transportation and Warehousing	272	33.7%	884	31.5%

Source: U.S. Census Bureau, OnTheMap Application and LEHD Origin-Destination Employment Statistics (Beginning of Quarter Employment, 2nd Quarter of 2018).

2018 Employment – Trade, Transportation, and Warehousing Jobs

Jobs by Worker Race				
	Workers		Residents	
	Count	Share	Count	Share
White Alone	530	65.7%	616	22.0%
Black or African American Alone	206	25.5%	2,051	73.1%
American Indian or Alaska Native Alone	7	0.9%	18	0.6%
Asian Alone	47	5.8%	77	2.7%
Native Hawaiian or Other Pacific Islander Alone	2	0.2%	4	0.1%
Two or More Race Groups	15	1.9%	38	1.4%

Jobs by Worker Ethnicity				
	Workers		Residents	
	Count	Share	Count	Share
Not Hispanic or Latino	578	71.6%	2,477	88.3%
Hispanic or Latino	229	28.4%	327	11.7%

Jobs by Worker Sex				
	Workers		Residents	
	Count	Share	Count	Share
Male	578	71.6%	1,356	48.4%
Female	229	28.4%	1,448	51.6%

Source: U.S. Census Bureau, OnTheMap Application and LEHD Origin-Destination Employment Statistics (Beginning of Quarter Employment, 2nd Quarter of 2018).

2018 Employment – Inflow/Outflow Statistics

North Lawndale Labor Market Size (Private Primary Jobs)						
	2002		2010		2018	
	Count	Share	Count	Share	Count	Share
Employed in North Lawndale	6,569	100.0%	6,996	100.0%	9,494	100.0%
Living in North Lawndale	12,668	192.8%	10,843	155.0%	12,145	127.9%
Net Job Inflow (+) or Outflow (-)	-6,099	-	-3,847	-	-2,651	-

North Lawndale Labor Force Efficiency (Private Primary Jobs)						
	2002		2010		2018	
	Count	Share	Count	Share	Count	Share
Living in North Lawndale	12,668	100.0%	10,843	100.0%	12,145	100.0%
Living and Employed in North Lawndale	433	3.4%	337	3.1%	492	4.1%
Living in North Lawndale but Employed Outside	12,235	96.6%	10,506	96.9%	11,653	95.9%

North Lawndale Employment Efficiency (Private Primary Jobs)						
	2002		2010		2018	
	Count	Share	Count	Share	Count	Share
Employed in North Lawndale	6,569	100.0%	6,996	100.0%	9,494	100.0%
Employed and Living in North Lawndale	433	6.6%	337	4.8%	492	5.2%
Employed in North Lawndale but Living Outside	6,136	93.4%	6,659	95.2%	9,002	94.8%

- 9,494 people are employed in North Lawndale, however 12,145 working residents live in the community, representing a -2,651 outflow of jobs.
- Only 492 residents both live and work within North Lawndale, 11,653 other working residents leave the community to go to work.
- 9,002 people come from outside of North Lawndale to work at jobs within the community.
- Those coming into the community to work tend to be paid more (53.3 percent earn more than \$3,333 per month) than those leaving the community to work (23 percent earn more than \$3,333 per month).
- A higher proportion of jobs within the community are “Goods Producing”, while those leaving the community are more likely to work in “Trade, Transportation, and Utilities” or other industries.

Source: U.S. Census Bureau, OnTheMap Application and LEHD Origin-Destination Employment Statistics (Beginning of Quarter Employment, 2nd Quarter of 2018).

2018 Employment – Inflow/Outflow Statistics (continued...)

**Work in
North Lawndale
but live outside**



**Live and work in
North Lawndale**



**Live in
North Lawndale
but work outside**

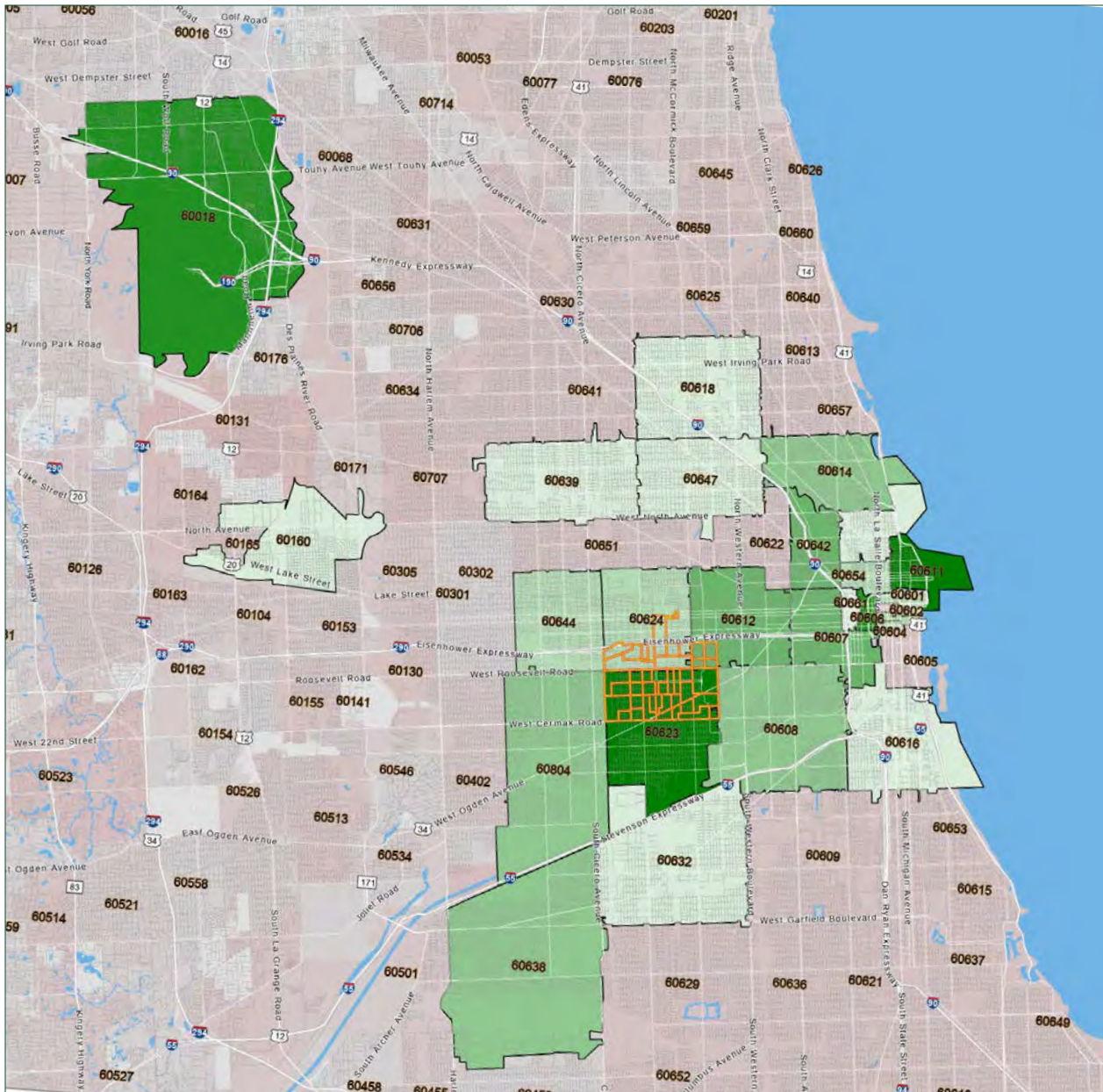


	2018	
	Count	Share
Inflow Job Characteristics (Private Primary Jobs)		
Internal Jobs Filled by Outside Workers	9,002	100.0%
Workers Aged 29 or younger	1,694	18.8%
Workers Aged 30 to 54	5,180	57.5%
Workers Aged 55 or older	2,128	23.6%
Workers Earning \$1,250 per month or less	788	8.8%
Workers Earning \$1,251 to \$3,333 per month	3,419	38.0%
Workers Earning More than \$3,333 per month	4,795	53.3%
Workers in the “Goods Producing” Industry Class	1,695	18.8%
Workers in the “Trade, Transportation, and Utilities” Industry Class	766	8.5%
Workers in the “All Other Services” Industry Class	6,541	72.7%

	2018	
	Count	Share
Interior Flow Job Characteristics (Private Primary Jobs)		
Internal Jobs Filled by Residents	492	100.0%
Workers Aged 29 or younger	87	17.7%
Workers Aged 30 to 54	287	58.3%
Workers Aged 55 or older	118	24.0%
Workers Earning \$1,250 per month or less	82	16.7%
Workers Earning \$1,251 to \$3,333 per month	273	55.5%
Workers Earning More than \$3,333 per month	137	27.8%
Workers in the “Goods Producing” Industry Class	52	10.6%
Workers in the “Trade, Transportation, and Utilities” Industry Class	41	8.3%
Workers in the “All Other Services” Industry Class	399	81.1%

	2018	
	Count	Share
Outflow Job Characteristics (Private Primary Jobs)		
External Jobs Filled by Residents	11,653	100.0%
Workers Aged 29 or younger	3,499	30.0%
Workers Aged 30 to 54	6,188	53.1%
Workers Aged 55 or older	1,966	16.9%
Workers Earning \$1,250 per month or less	3,123	26.8%
Workers Earning \$1,251 to \$3,333 per month	5,853	50.2%
Workers Earning More than \$3,333 per month	2,677	23.0%
Workers in the “Goods Producing” Industry Class	1,160	10.0%
Workers in the “Trade, Transportation, and Utilities” Industry Class	2,763	23.7%
Workers in the “All Other Services” Industry Class	7,730	66.3%

2018 Top 25 ZIP Codes where North Lawndale Residents Work



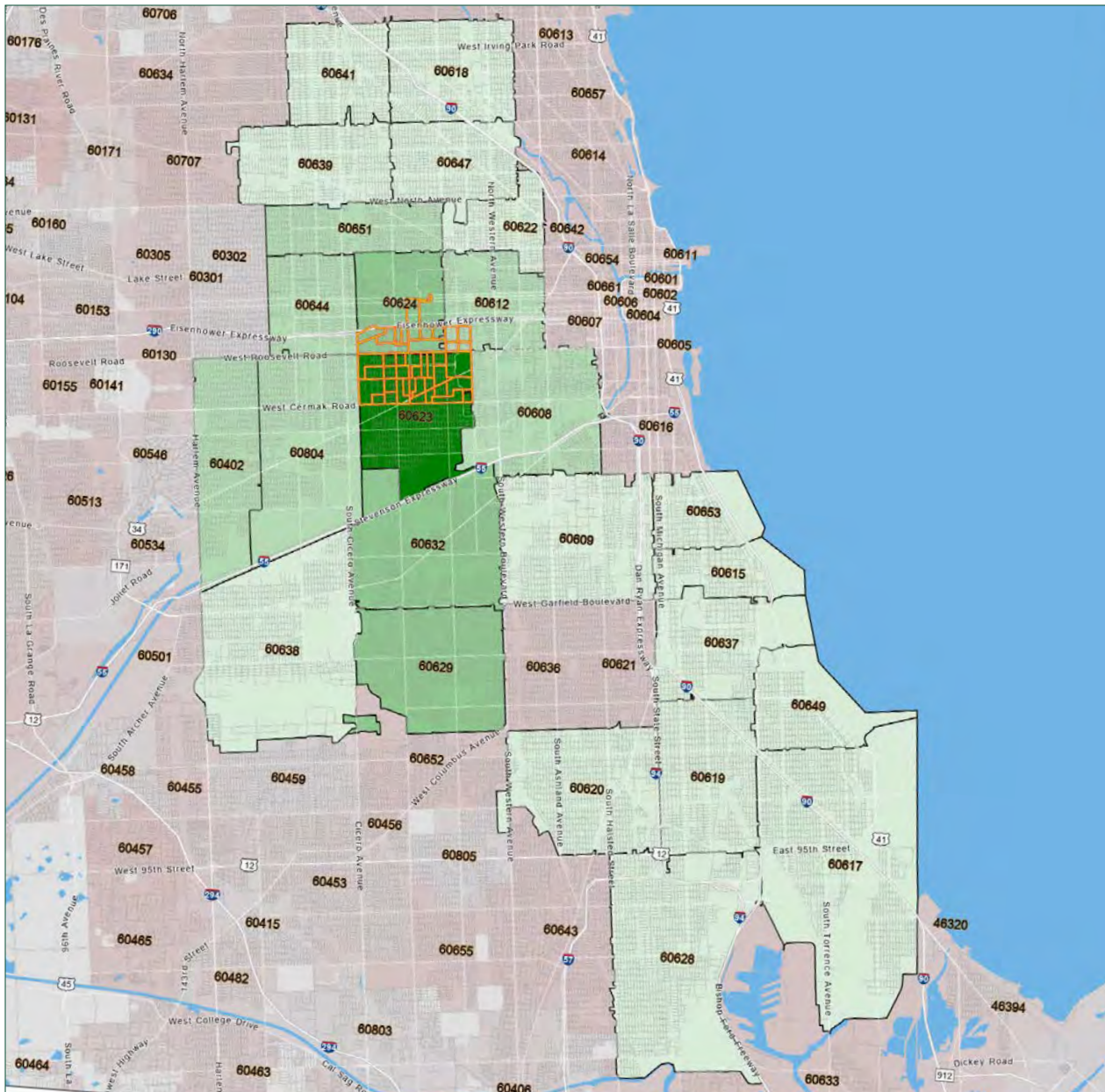
Jobs Counts by ZIP Code Where Workers are Employed - Private Primary Jobs

ZIP Code	Count	Share
60611	492	4.1%
60623	447	3.7%
60606	433	3.6%
60018	392	3.2%
60642	324	2.7%
60607	296	2.4%
60612	293	2.4%
60804	271	2.2%
60608	257	2.1%
60614	235	1.9%
60638	228	1.9%
60601	212	1.7%
60603	193	1.6%
60624	190	1.6%
60644	185	1.5%
60654	172	1.4%
60604	171	1.4%
60616	159	1.3%
60661	153	1.3%
60618	147	1.2%
60160	145	1.2%
60632	145	1.2%
60639	144	1.2%
60647	118	1.0%
60610	117	1.0%
All Other Locations	6,226	51.3%

North Lawndale residents work all over the Chicagoland region with large concentrations working in the Loop, North and South Lawndale, and in the O'Hare Airport areas.

Source: U.S. Census Bureau, OnTheMap Application and LEHD Origin-Destination Employment Statistics (Beginning of Quarter Employment, 2nd Quarter of 2018).

2018 Top 25 ZIP Codes where North Lawndale Workers Live

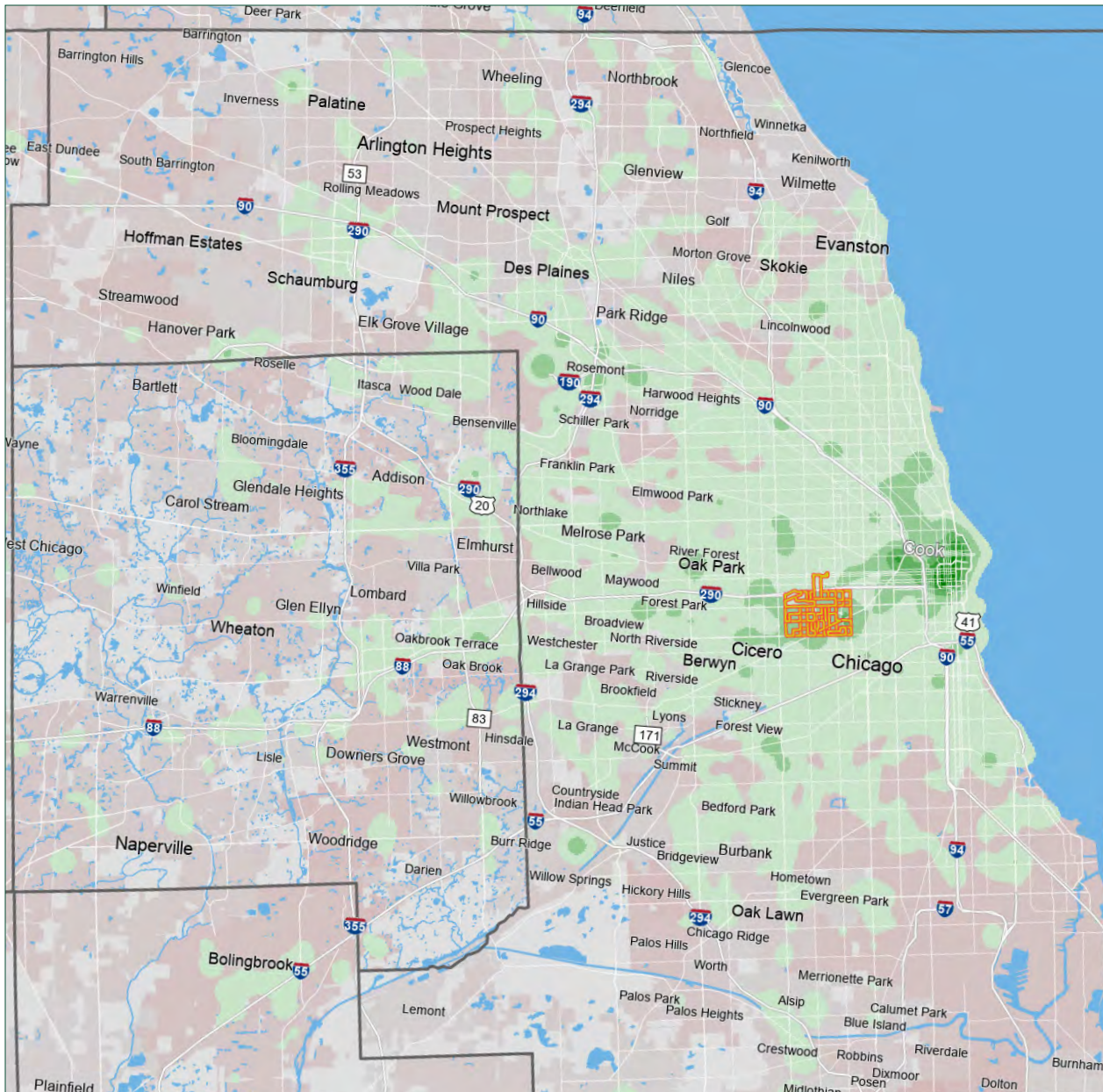


Jobs Counts by ZIP Code Where Workers Live - Private Primary Jobs		
ZIP Code	Count	Share
60623	648	6.8%
60629	315	3.3%
60624	256	2.7%
60632	253	2.7%
60804	252	2.7%
60608	245	2.6%
60402	199	2.1%
60644	193	2.0%
60651	187	2.0%
60612	175	1.8%
60647	168	1.8%
60639	159	1.7%
60609	149	1.6%
60638	145	1.5%
60622	137	1.4%
60620	135	1.4%
60619	134	1.4%
60649	109	1.1%
60618	107	1.1%
60617	103	1.1%
60628	103	1.1%
60637	102	1.1%
60615	97	1.0%
60641	96	1.0%
60653	94	1.0%
All Other Locations	4,933	52.0%

North Lawndale workers primarily come from surrounding neighborhoods and the southeast and northwest areas of Chicago.

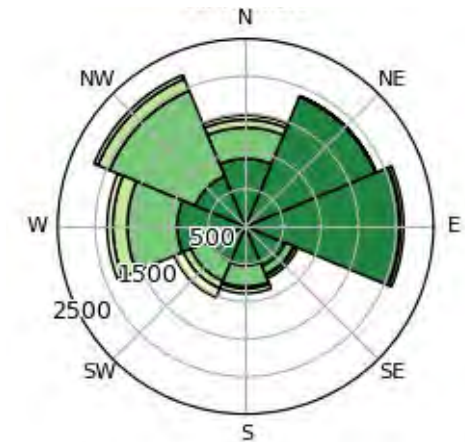
Source: U.S. Census Bureau, OnTheMap Application and LEHD Origin-Destination Employment Statistics (Beginning of Quarter Employment, 2nd Quarter of 2018).

2018 Employment Distance-Direction Analysis



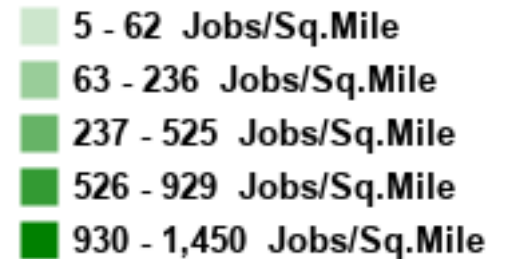
North Lawndale residents work all over the Chicagoland region with the largest concentration working in the direction of the Loop.

2018 Job Counts by Distance/Direction



2018 Job Counts by Distance

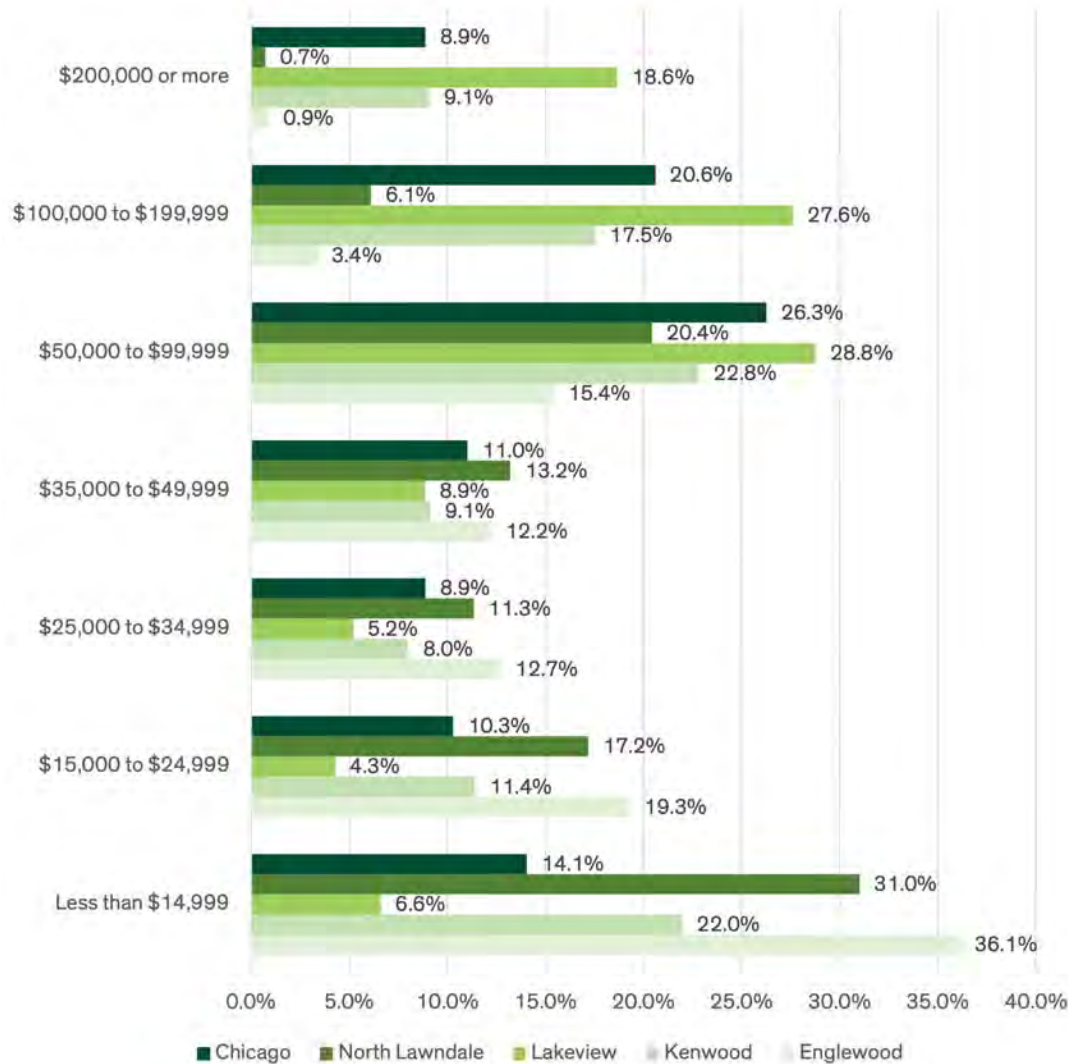
	2018	
	Count	Share
Total Private Primary Jobs	12,145	100.0%
Less than 10 miles	8,064	66.4%
10 to 24 miles	2,999	24.7%
25 to 50 miles	618	5.1%
Greater than 50 miles	464	3.8%



Source: U.S. Census Bureau, OnTheMap Application and LEHD Origin-Destination Employment Statistics (Beginning of Quarter Employment, 2nd Quarter of 2018).

Household Income

Household Income in North Lawndale and Comparison Communities, 2015-2019 (in 2019 \$)



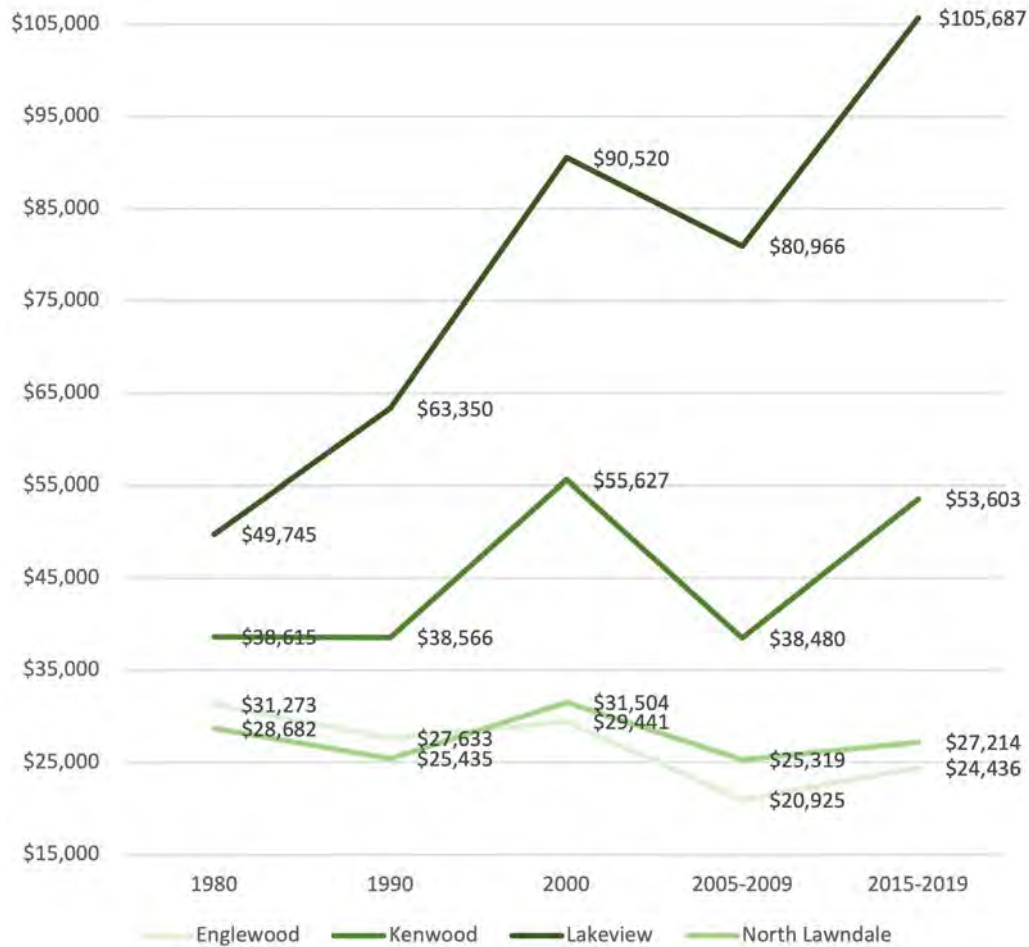
Household Income

- North Lawndale has a larger share of households that have an income less than \$14,999 at 31 percent. This is higher than Kenwood (22 percent), Lakeview (6.6 percent), and the City of Chicago 14.1 percent.
- North Lawndale's households that have an income between \$15,000 and \$24,999 is 17.2%. This is higher than Kenwood (11.4 percent), Lakeview (4.3 percent), and the City of Chicago 10.3 percent.
- North Lawndale has a much smaller share of households that have an income between \$100,000 to \$199,999 consisting of 6.1 percent of households. This is smaller than Kenwood (17.5 percent), Lakeview (27.6 percent), and the City of Chicago (20.6 percent).

Source: 2005 - 2009 and 2015 - 2019 American Community Survey, 5-year estimates; U.S. Census Bureau

Household Income (continued...)

Average of Median Household Income from 1980 to 2015-2019



Median Household Income Over Time

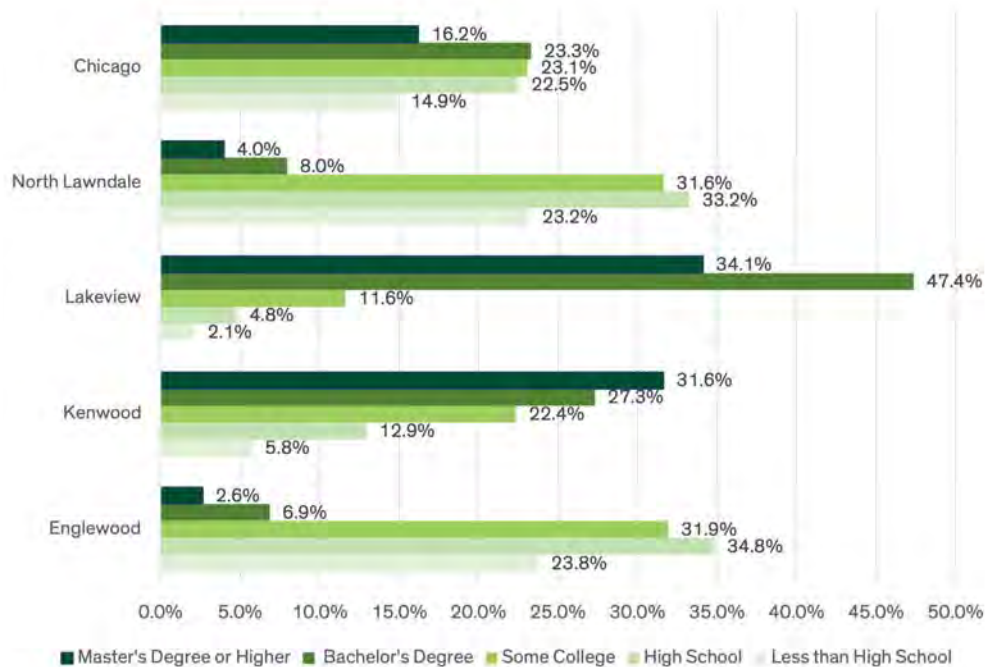
- Since 1980 to 2015-2019, the estimated median household income in Lakeview has more than doubled (from \$49,745 to \$105,687). During that same period, North Lawndale's median household income is estimated to have decreased slightly from \$31,273 to \$27,214.

Source: 2005 - 2009 and 2015 - 2019 American Community Survey, 5-year estimates; U.S. Census Bureau

Educational Attainment

Highest Level of Education Attained for the Population Age 25 and Over in North Lawndale and Chicago, 2005 - 2009 to 2015 - 2019						
Population and Highest Level of Education Attained	North Lawndale		Chicago		North Lawndale	Chicago
	2009	2019	2009	2019	% Change	% Change
Population Age 25 Years and Over	26,603	23,542	1,843,405	1,875,020	-0.3%	1.7%
Less than High School	7,041	5,457	390,343	278,926	-22.5%	-28.5%
High School Graduate (Includes Equivalency)	8,120	7,826	442,111	422,420	-3.6%	-4.5%
Some College	6,093	7,448	425,738	433,434	22.2%	1.8%
Bachelor's Degree	1,639	1,874	350,953	435,959	14.3%	24.2%
Master's Degree and Above	710	937	234,260	304,281	32.0%	29.9%

Highest Level of Education Attained for the Population Age 25 and Over in North Lawndale and Comparison Communities, 2015-2019



Education

- The population age 25 and over without a high school degree decreased by an estimated 1,584, a 22.5 percent decrease from 2005 – 2009 to 2015 - 2019.
- The population age 25 and over with some college increased by an estimated 1,355 representing a 22.2 percent increase from 2005 – 2009 to 2015 - 2019.
- The population age 25 and over with a bachelor's degree increased by an estimated 235 people representing, a 14.3 percent increase from 2005 – 2009 to 2015 - 2019. This increase lagged the general trend in Chicago where the estimated population with a bachelor's degree increased by 24.2 percent.

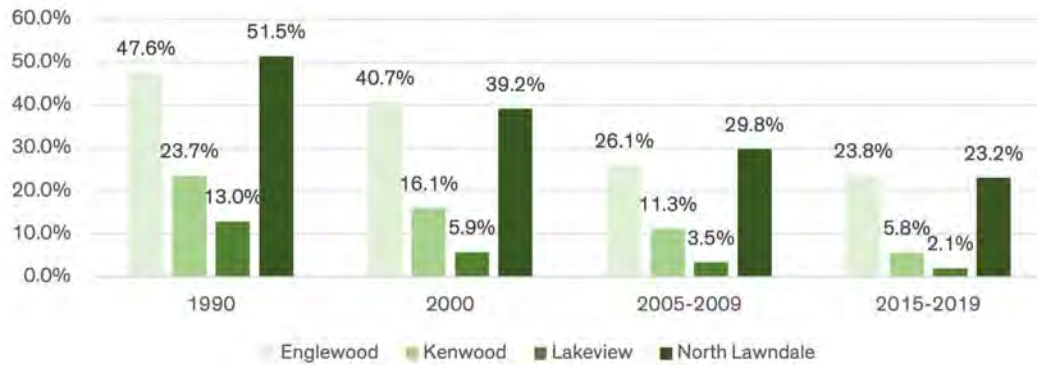
Comparison Communities

- North Lawndale's population over age 25 with a bachelor's degree is estimated at 8 percent, lower than Kenwood (27.3 percent), Lakeview (47.4 percent), and the City of Chicago (23.3 percent).
- North Lawndale's population over age 25 with a master's degree or higher is estimated at 4 percent, much lower than Kenwood (31.6 percent), Lakeview (34.1 percent), and the City of Chicago (16.2 percent).
- North Lawndale's population has a higher percentage of its population age 25 and over that has less than a high school degree (23.2 percent) compared to Lakeview (2.1 percent), Kenwood (5.8 percent), and the City of Chicago (14.9 percent).

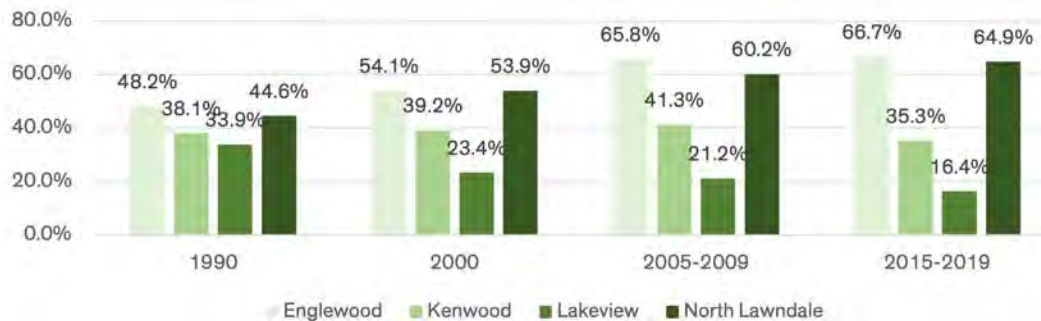
Source: 2005 - 2009 and 2015 - 2019 American Community Survey, 5-year estimates; U.S. Census Bureau

Educational Attainment

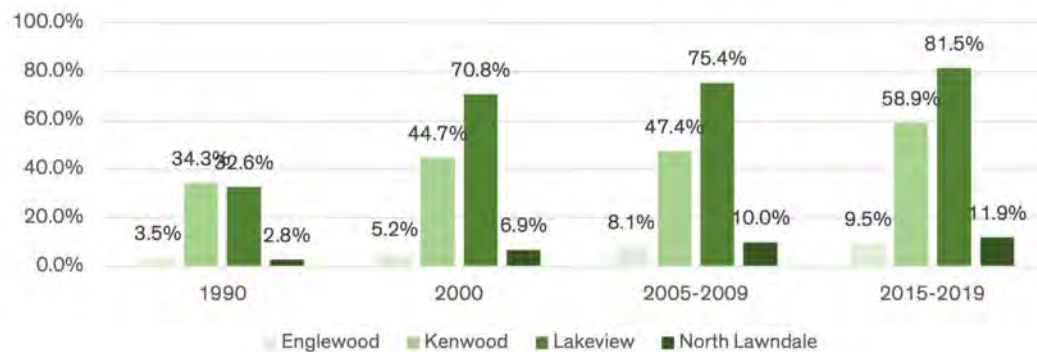
Population Age 25 and Over with Less than High School as the Highest Level of Education Attained in North Lawndale and Selected Areas 1990 to 2015-2019



Population Age 25 and Over with High School as the Highest Level of Education Attained in North Lawndale and Selected Areas 1990 to 2015-2019



Population Age 25 and Over with a Bachelor's Degree or More as the Highest Level of Education Attained in North Lawndale and Selected Areas 1990 to 2015-2019



- From 1990 to 2015-2019, North Lawndale's percentage of individuals age 25 and over whose highest level of education is less than high school has decreased significantly from 51.5% to 23.2%. When considering the period of 2015-2019 however, the population age 25 and over with less than a high school degree is still higher when compared to Kenwood (5.8%) and Lakeview (2.1%).
- From 1990 to 2015-2019, North Lawndale's population age 25 and over that have attained at least a high school degree has increased steadily from 44.6% of the population in 1990 to 64.9% of the population in 2015-2019. From 1990 to 2015-2019, Kenwood and Lakeview's population age 25 and over with a high school degree as the highest education attainment has decreased as the population has increased rates of post high school degree completion.
- From 1990 to 2015-2019, North Lawndale's population age 25 and over with a Bachelor's degree or higher has steadily increased from 3.9% in 1990 to 11.9% in 2015-2019, a change of 8%. These rates of growth are much higher for both Kenwood and Lakeview which in the same period saw increases of 20.7% (Kenwood) and 28.4% (Lakeview).

Source: 1990 and 2000 Decennial Census; 2005 - 2009 and 2015 - 2019 American Community Survey, 5-year estimates; U.S. Census Bureau

Educational Assets



Legend

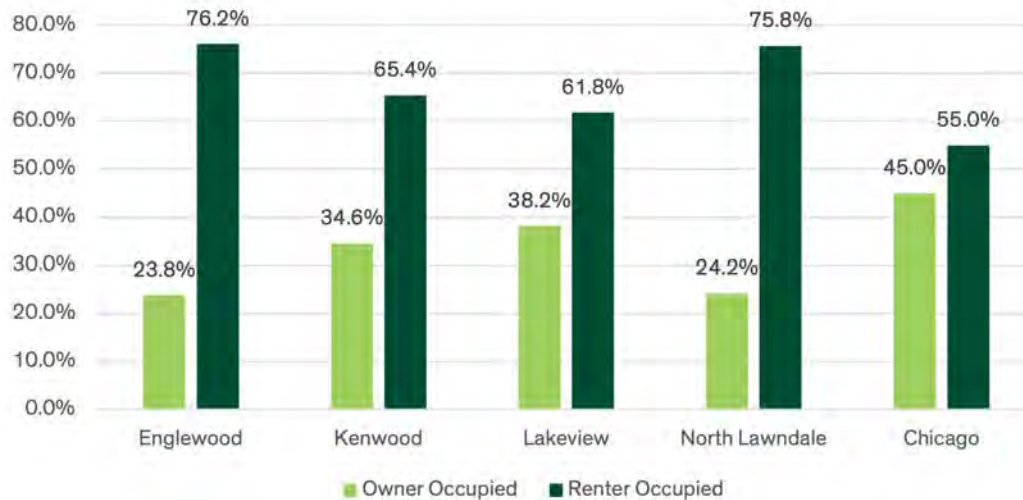
- Charter
- Private
- Traditional
- Parks
- Water
- North Lawndale Study Area

- | | |
|---|---|
| 1. Holy Family School | 14. Lawndale Elementary Community Academy |
| 2. Chicago West Side Christian School | 15. Roswell B Mason Elementary School |
| 3. UCAN Academy | 16. William Penn Elementary School |
| 4. KIPP Ascend Charter School | 17. Dvorak Technology Academy |
| 5. L.E.A.R.N. Romano Butler Campus | 18. James Weldon Johnson Elementary School |
| 6. Legacy Charter School | 19. Collins Academy High School |
| 7. North Lawndale College Prep - Christiana | 20. Frazier Prospective IB Magnet Elementary School |
| 8. North Lawndale College Prep - Collins | 21. Manley Career Academy High School |
| 9. Noble - DRW College Prep | 22. Kellman Corporate Community Elementary School |
| 10. Youth Connection Charter School - CCA Academy | 23. John Milton Gregory Math & Science |
| 11. Crown Community Academy of Fine Arts | 24. Charles G. Hammond School |
| 12. Theodore Herzl Elementary School | 25. Charles Sumner Math & Science Academy |
| 13. Charles Evans Hughes Elementary School | 26. Daniel Webster Elementary School |

Source: Chicago Data Portal, City of Chicago

Housing

Housing Tenure Percentage in North Lawndale and Comparison Communities, 2015-2019



Housing Tenure

- 75.8 percent of households in North Lawndale are renters. This is higher than Kenwood (65.4 percent), Lakeview (61.8 percent), and the City of Chicago (55 percent).
- From 2005-2009 to 2015-2019, there were 458 less occupied housing units that were owner occupied representing a 12.2 percent decrease.
- During that same period, owner occupied housing also decreased in the City of Chicago but at a lower rate (7.1 percent).

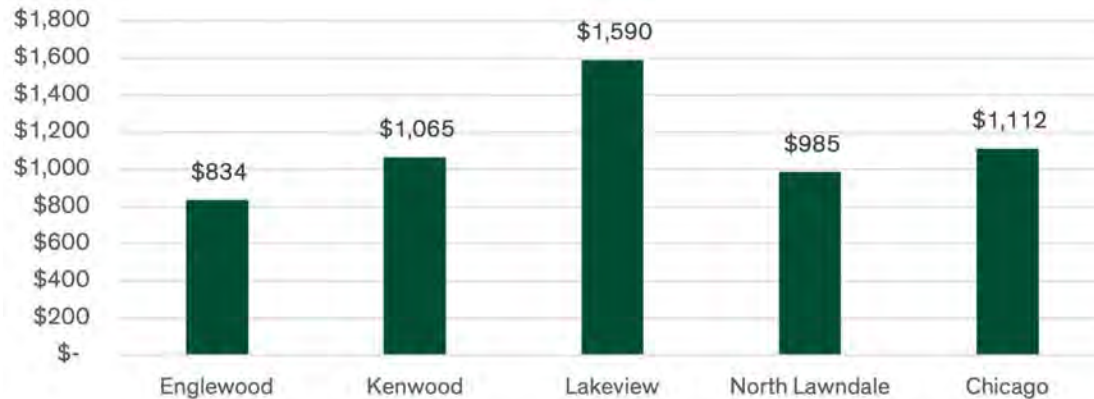
Housing Tenure in North Lawndale and Chicago, 2005 - 2009 to 2015 - 2019

Housing Tenure Type	North Lawndale		Chicago		North Lawndale	Chicago
	2009	2019	2009	2019	% Change	% Change
Occupied Housing Units	13,502	13,659	1,063,047	1,066,829	1.2%	0.4%
Owner Occupied	3,764	3,306	516,715	480,001	-12.2%	-7.1%
Renter Occupied	9,738	10,353	546,332	586,828	6.3%	7.4%

Source: 2005 - 2009 and 2015 - 2019 American Community Survey, 5-year estimates; U.S. Census Bureau

Housing (continued...)

Median Gross Rent in North Lawndale and Comparison Communities, 2015-2019



Median Gross Rent

- Given the large percentage of renters in North Lawndale and the lower median household income compared to the City of Chicago and other Community Areas, the average of median gross rent is comparable to other areas. North Lawndale's average of median gross rent is \$985 which is \$80 less than in Kenwood and \$127 less than in the City of Chicago.
- North Lawndale's average of median rent is much lower than in Lakeview's by \$605.

Gross Rent as a Percentage of Household Income

- From 2005-2009 to 2015-2019, renter-occupied households that paid less than 30 percent of their income on rent increased by 10.6 percent, slightly higher than the City of Chicago's increase of 6.1 percent.
- However, renter-occupied households who experience a high housing burden (paying 50 percent or more of their income on rent) also increased by 12.6 percent.

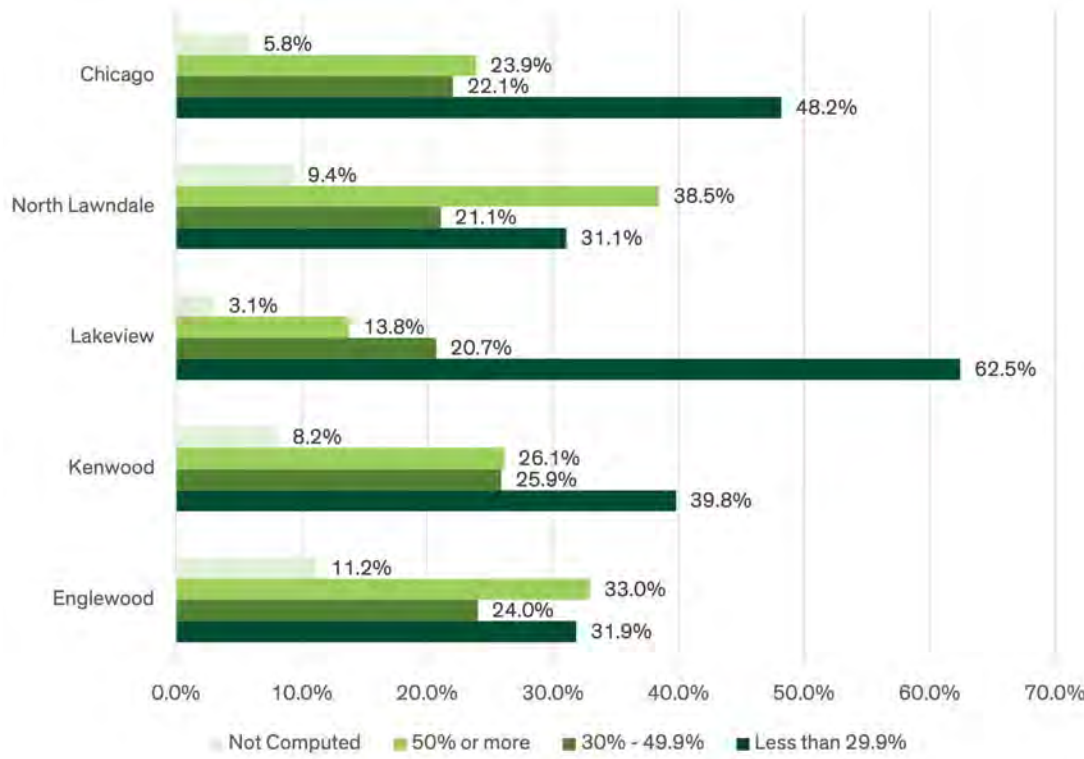
Gross Rent as a Percentage of Household Income in North Lawndale and Chicago, 2005 - 2009 to 2015 - 2019

Housing Units	North Lawndale		Chicago		North Lawndale	Chicago
	2009	2019	2009	2019	% Change	% Change
Renter-Occupied Housing Units	8,212	8,735	546,332	586,828	6.4%	7.4%
Not Computed	975	969	29,783	34,142	-0.6%	14.6%
Less than 29.9 Percent	2,912	3,220	244,467	282,905	10.6%	6.1%
30 to 49.9 Percent	2,317	2,183	123,398	129,499	-5.8%	4.9%
50 Percent or More	3,534	3,981	148,684	140,282	12.6%	-5.7%

Source: 2005 - 2009 and 2015 - 2019 American Community Survey, 5-year estimates; U.S. Census Bureau

Housing (continued...)

**Gross Rent as Percentage of Household Income
in North Lawndale and Comparison Communities, 2015-2019**



Comparison Communities

- North Lawndale has a higher portion of households that experience high housing burden, defined as paying 50 percent or more of their income on rent, than the City of Chicago and other community areas. North Lawndale's households that pay more than 50 percent of their income on rent is 38.5 percent, higher than Kenwood (26.1 percent), Lakeview (13.8 percent), Englewood (33 percent), and the City of Chicago (23.9 percent).

Monthly Owner Costs

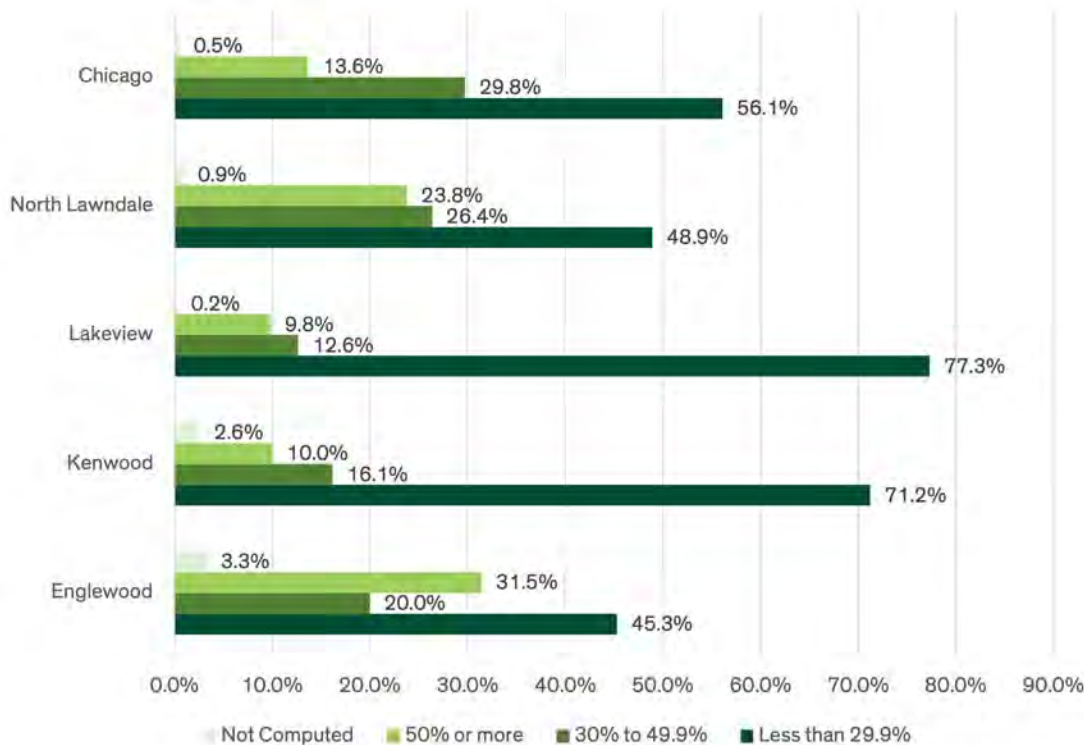
- From 2005-2009 to 2015-2019, there were approximately 771 less owner-occupied housing units (with a mortgage) representing a decrease of 20.2 percent. This is slightly higher than the City of Chicago's decline of owner-occupied housing units of 15.9 percent.
- From the same period, there was an increase of owner-occupied housing units (with a mortgage) where the households were not experiencing housing burden, defined as households that spent less than 30 percent of their household income on housing costs. These households increased by 146 housing units representing a 19.1 percent increase in that period, higher than the City of Chicago's rate of 9.5 percent.
- In that same period, North Lawndale's owner-occupied housing units with a high housing burden (households that pay 50 percent or more of their income on housing costs) decreased by 603 units, a decrease of 57.5 percent.
- North Lawndale's owner-occupied housing

Source: 2005 - 2009 and 2015 - 2019 American Community Survey, 5-year estimates; U.S. Census Bureau

Housing (continued...)

Monthly Owner Costs as a Percentage of Household Income in North Lawndale and Chicago (with a Mortgage), 2005 - 2009 to 2015 - 2019						
Housing Units with a Mortgage	North Lawndale		Chicago		North Lawndale	Chicago
	2009	2019	2009	2019	% Change	% Change
Owner-Occupied Housing Units with a Mortgage	2,641	1,870	379,831	319,595	-20.2%	-15.9%
Less than 30 Percent	769	915	189,609	207,645	19.1%	9.5%
30 to 49 Percent	778	493	187,830	110,115	-36.6%	-41.4%
50 Percent or More	1,048	445	86,668	50,513	-57.5%	-41.7%

Monthly Owner Costs for Households with a Mortgage in North Lawndale and Comparison Communities, 2015-2019



units with a housing burden (paying 30 to 49 percent of their income on housing costs) decreased by 36.6 percent from 2005-2009 to 2015-2019 representing 285 units.

- Given the decreases of owner-occupied households experiencing housing burden and more (paying more than 30 percent of income on housing costs) from 2005-2009 to 2015-2019, and the decrease of owner-occupied housing units with a mortgage, this points to households that lost their homes in that time period.

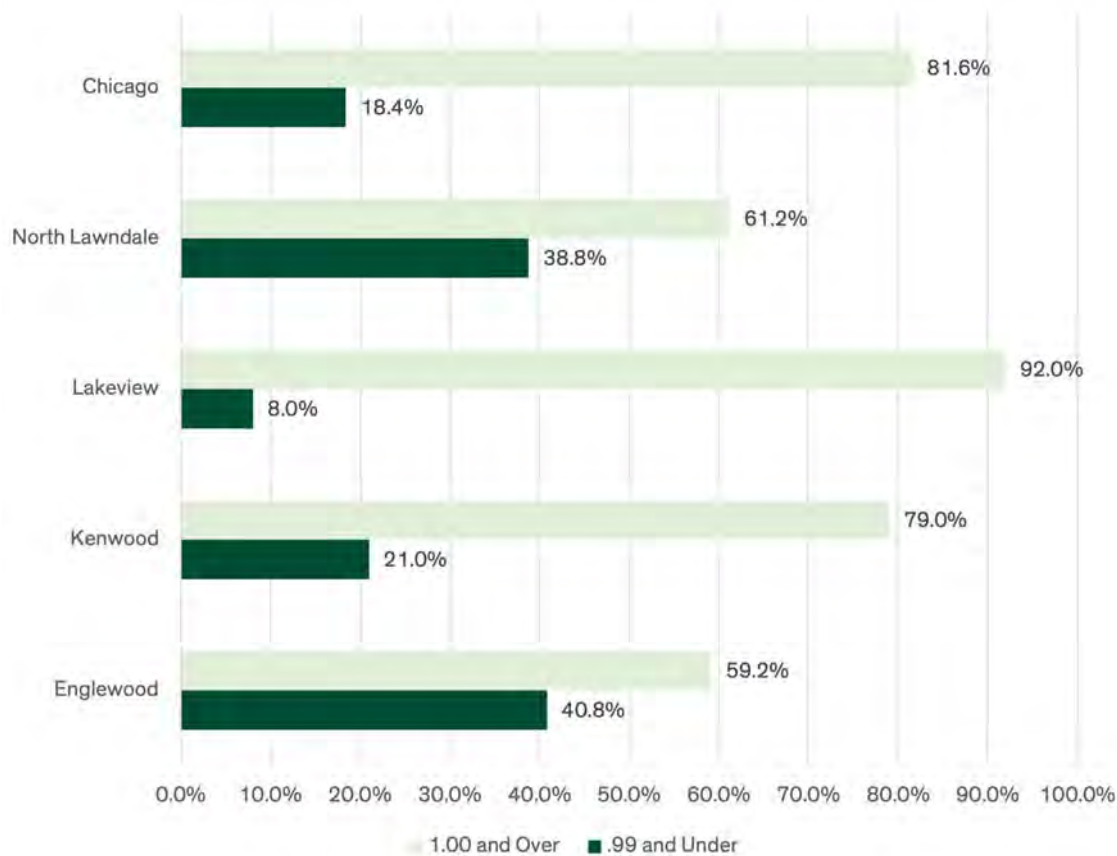
Comparison Communities

- North Lawndale's rate of households (with mortgage) experiencing housing burden (paying 30 percent or more of income on housing costs) decreased from 2005-2009 to 2015-2019. However, the rates of housing burden are still higher when compared to the City of Chicago and other community areas. North Lawndale's households with a mortgage paying 50 percent or more of their income on housing costs is 23.8 percent, higher than Kenwood (10 percent), Lakeview (9.8 percent), and the City of Chicago (13.6 percent).
- North Lawndale's households with a mortgage paying 30 percent to 49.9 percent of their income on housing costs is 26.4 percent, higher than Kenwood (16.1 percent), Lakeview (12.6 percent), and Englewood (20 percent).

Source: 2005 - 2009 and 2015 - 2019 American Community Survey, 5-year estimates; U.S. Census Bureau

Ratio of Income to Poverty Level

**Ratio of Income to Poverty Level in the Past 12 Months
in North Lawndale and Comparison Communities, 2015-2019**

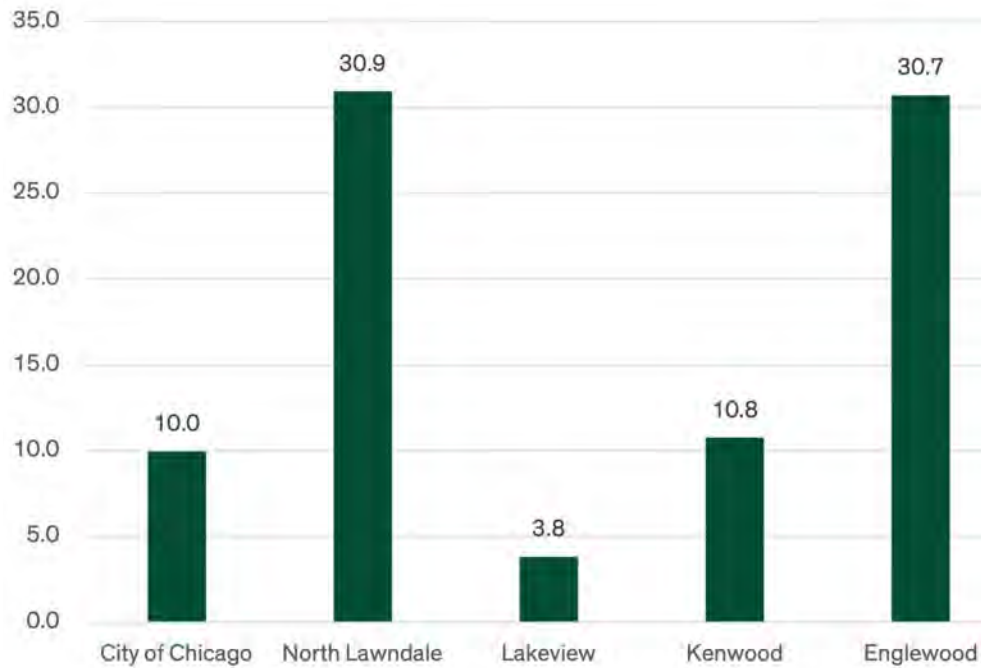


- Households with a ratio over 1 are considered to exceed the poverty rate. North Lawndale has 38.8% of its households below the poverty rate.
- North Lawndale's poverty rate is higher than Kenwood (21%), Lakeview (8.0%), and the City of Chicago (18.4%). North Lawndale's poverty rate is more than double the poverty rate of the City of Chicago and more than 4 times the rate of Lakeview.
- North Lawndale's households that exceed the poverty ratio by 2.0 and over is 35.6%, a rate lower than Kenwood (64.6%), Lakeview (85.3%), and the City of Chicago (62.1%).

Source: 2005 - 2009 and 2015 - 2019 American Community Survey, 5-year estimates; U.S. Census Bureau

Crime

Per Capita Violent Crime (Per 1,000) in North Lawndale and Selected Areas (2017)



- North Lawndale's per capita violent crime is 30.9 incidents (per 1,000), which is 3 times the rate of the City of Chicago (10 per 1,000) and Kenwood (10.8 per 1,000).
- North Lawndale's per capita violent crime is more than 8 times the per capita violent crime of Lakeview (3.8 per 1,000).

Source: 2017 Chicago Data Portal, City of Chicago

Health Indicators

Note: This data is for the North Lawndale community area, which encompasses most, but not all of the LCDC service area.

Category	Subcategory	Indicator	Units	North Lawndale	Comparison Communities				Time Period
					Englewood	Kenwood	Lake View	Chicago	
Clinical Care	Access to Care	Annual dental cleaning	adults	12,200	13,200	8,300	62,700	1,354,000	2018
		Annual dental cleaning rate	% of adults	50.5	50.9	60	77.7	64.1	2018
		Primary care provider	adults	15,700	18,700	9,500	66,600	1,570,000	2018
		Primary care provider rate	% of adults	66.5	70.4	69.6	81.2	73.2	2018
		Routine checkup	adults	18,200	20,700	8,200	56,500	1,654,000	2018
		Routine checkup rate	% of adults	77.2	90.7	69.5	75.6	77.9	2018
		Uninsured residents	residents	3,433	2,911	836	3,416	258,865	2015-2019
		Uninsured rate	% of residents	10.52	12.3	6.35	3.93	9.65	2015-2019
	Quality of Care	Early and adequate prenatal care	births	1,724	1,012	580	4,697	20,263	2017
		Early and adequate prenatal care rate	% of births	57	51.3	71.2	83.1	65.3	2017
		Prenatal care in first trimester	births	1,956	1,265	646	5,221	22,615	2017
		Prenatal care in first trimester rate	% of births	62.6	60.8	76.2	88.3	69.7	2017
		Health care satisfaction	adults	15,800	14,500	8,600	56,100	1,376,000	2018
		Health care satisfaction rate	% of adults	72.3	63	68.2	76.9	68	2018
Physical Environment	Housing & Transit	Received needed care	adults	15,300	11,200	8,400	61,500	1,454,000	2018
		Received needed care rate	% of adults	82.7	63.7	75.3	85.7	83.7	2018
		Accidents mortality rate	per 100,000 population	90.2	63.2	24.6	12.4	47.4	2017
		Crowded housing	% of occupied housing units	3.19	2.5	1.62	1.5	3.62	2015-2019
		Severely rent-burdened	% of renter-occupied housing units	37.72	32.39	25.08	13.68	23.91	2015-2019
	Pollution	Rent-burdened	% of renter-occupied housing units	58.63	57.71	48.79	32.73	45.97	2015-2019
		Traffic intensity	distance-weighted vehicles	480	2,687	1,494	1,686	1,458	2020
		Vacant	% of housing units	24.51	34.86	9.86	7.79	12.16	2015-2019
Resource Availability	Particulate matter (PM 2.5) concentration	µg/m ³	9.567	9.48	9.351	9.195	9.429	2020	
	Traffic intensity	distance-weighted vehicles	480	2,687	1,494	1,686	1,458	2020	
	Low food access	% of residents	26.13	21.77	0	6.15	27.61	2015	
Morbidity	Behavioral Health	Opioid-related overdoses		529	172	33	57	7,526	2017
		Opioid-related overdose mortality	deaths	31	10	3	19	636	2017
		Opioid-related overdose mortality (Chicago location)	deaths	41	15	4	21	796	2017

Health Indicators (continued...)

Category	Subcategory	Indicator	Units	North Lawndale	Comparison Communities				Time Period
					Englewood	Kenwood	Lake View	Chicago	
Morbidity	Behavioral Health	Opioid-related overdose mortality rate	per 100,000 population	93.2	34.9	15.6	22.6	23.4	2017
	Chronic Disease	Invasive breast cancer diagnosis rate	per 100,000 female population	157.19	238.82	221.85	203.33	188.9	2013-2017
		Cervical cancer diagnosis rate	per 100,000 female population	15.87	26.97	13.35	6.09	14.44	2013-2017
		Oral cancer diagnosis rate	per 100,000 population	18.37	33.38	26.64	15.03	17.86	1989-2013
		Lung cancer diagnosis rate	per 100,000 population	78.77	153.13	118.54	74.77	95.35	2013-2017
		Leukemia and lymphoma diagnosis rate	per 100,000 population	27.84	30.89	30.94	43.01	34.1	1989-2013
		Nervous system cancer diagnosis rate	per 100,000 population	4.25	3.73	4.74	7.05	5.95	1989-2013
		Colorectal cancer diagnosis rate	per 100,000 population	65.41	95.77	66.67	59.89	66.2	2013-2017
		Prostate cancer diagnosis rate	per 100,000 male population	158.95	253.34	207.83	133.47	161.15	2013-2017
		Cancer diagnosis rate	per 100,000 population	600.99	823.98	741.51	620.1	653.63	2013-2017
		Distant/systemic cancer diagnosis rate	per 100,000 population	122.59	185.16	149.24	117.77	127.19	1989-2013
		Adult asthma	adults	2,400	4,200	1,800	5,200	204,000	2018
		Adult asthma rate	% of adults	10	15.8	12.7	6.4	9.5	2018
		Adult diabetes	adults	2,200	3,300	700	5,400	212,000	2018
		Adult diabetes rate	% of adults	9	12.4	4.9	6.6	9.9	2018
		Hypertension	adults	7,000	8,500	3,600	22,800	593,000	2018
		Hypertension rate	% of adults	29.7	37	28.9	30.7	27.7	2018
		Adult obesity	adults	10,800	9,100	3,600	14,600	662,000	2018
		Adult obesity rate	% of adults	44.1	34.3	26.2	17.8	30.8	2018
		Maternal	Births		3,328	2,303	981	6,674	36,183
	Birth rate		per 1,000 population	18.5	15	11	14.1	13.4	2017
	Low birthweight		births	483	390	101	458	3,409	2017
	Low birthweight rate		% of births	14.5	16.9	10.3	6.9	9.4	2017
	Cesarean delivery		births	329	211	109	805	4,221	2017
	Cesarean delivery rate		% of births	14.2	12.8	15	15.7	15.8	2017
	General fertility rate		per 1,000 births	77.7	64	45.5	40.2	55.1	2017
	Mean age at first birth		first birth	28	26	31	35	28	2017
	Preterm births		births	468	347	98	573	3,817	2017
Preterm births rate	% of births		14.1	15.1	10	8.6	10.5	2017	

Health Indicators (continued...)

Category	Subcategory	Indicator	Units	North Lawndale	Comparison Communities				Time Period
					Englewood	Kenwood	Lake View	Chicago	
Morbidity	Maternal	Total fertility rate	live births per 1,000 women	2,267.00	1,845.40	1,404.00	985.2	2,097.70	2017
		Twin births	births	107	84	39	364	1,244	2017
		Twin birth rate	per 1,000 births	32.2	36.5	39.8	54.5	34.4	2017
		Very low birthweight	births	102	80	27	56	638	2017
		Very low birthweight rate	% of births	3.1	3.5	2.8	0.8	1.8	2017
	Quality of Life	Disability	% of residents	15.91	23.09	11.62	5.46	10.49	2015-2019
		Hearing difficulty	% of residents	2.88	3.58	2.2	1.48	2.15	2015-2019
		Vision difficulty	% of residents	4.1	6.25	2.46	1.05	2.39	2015-2019
		Cognitive difficulty	% of residents	7.33	7.84	3.83	2.04	3.78	2015-2019
		Ambulatory difficulty	% of residents	9.6	14.48	5.62	2.55	6.06	2015-2019
		Independent living difficulty	% of residents	6.38	9.71	3.5	1.93	4.18	2015-2019
		Self-care difficulty	% of residents	4.04	5.86	1.33	1.03	2.33	2015-2019
		Overall health status - excellent, very good, good	adults	20,000	19,500	12,100	74,100	1,752,000	2018
		Overall health status - excellent, very good, good rate	% of adults	82.1	73.5	87.6	90.5	81.4	2018
Social and Economic Factors	Community Safety	Neighborhood safety	adults	11,200	14,300	11,800	76,900	1,629,000	2018
		Neighborhood safety rate	% of adults	45.9	55.3	85.8	94.4	75.9	2018
	Education	High school graduation rate	% of residents	77.56	76.44	94.38	97.35	85.12	2015-2019
		College graduation rate	% of residents	12.5	8.89	59.61	81.32	39.48	2015-2019
		Preschool enrollment	% of toddlers	53.35	39.83	53.8	77.28	57.89	2015-2019
	Employment	Unemployment rate	%	14.41	24.47	9.58	2.8	8.06	2015-2019
	Family & Social Support	Community belonging	births	11,500	12,800	10,800	52,900	1,324,000	2018
		Community belonging rate	% of adults	49.5	48.7	78.1	65.4	62.6	2018
	Income	Economic Diversity Index	score	0.75	0.72	0.65	0.38	0.79	2015-2019
		Hardship Index	score	88.7	95	36.1	3.8	62.2	2015-2019
		Median household income	\$	\$28,897	\$23,050	\$53,211	\$102,202	\$55,703	2015-2019
		Per capita income	\$	\$14,849	\$15,042	\$46,333	\$72,740	\$35,482	2015-2019
		Poverty rate	% of residents	38.14	40.1	19.43	7.92	18.39	2015-2019
	Public Assistance	Food stamps (SNAP)	% of households	44.6	45.53	17.59	3.19	18.26	2015-2019

Health Indicators (continued...)

Category	Subcategory	Indicator	Units	North Lawndale	Comparison Communities				Time Period
					Englewood	Kenwood	Lake View	Chicago	
Social and Economic Factors	Public Assistance	Households in poverty not receiving food stamps (SNAP)	% of households below the poverty line	34.69	27.72	61.36	84.57	48.05	2015-2019
		Public assistance income (cash welfare)	% of households	4.3	8.4	1.25	0.87	3.15	2015-2019
Health Behaviors	Alcohol & Drug Use	Adult binge drinking	adults	4,900	4,600	2,700	29,600	553,000	2018
		Adult binge drinking rate	% of adults	21.9	20.2	21.8	39.8	26.4	2018
	Diet & Exercise	Adult fruit and vegetable servings	adults	3,500	5,600	4,500	29,500	546,000	2018
		Easy access to fruits and vegetables	adults	11,600	14,000	9,500	68,000	1,450,000	2018
		Easy access to fruits and vegetables rate	% of adults	49.8	54.5	68.7	82.9	67.8	2018
		Adult fruit and vegetable servings rate	% of adults	15	24.3	35.2	39.5	25.6	2018
		Adult physical inactivity	adults	6,200	7,500	2,700	11,600	580,000	2018
		Adult physical inactivity rate	% of adults	25.2	28.1	19.4	14.1	27	2018
		Adult soda consumption	adults	10,500	9,800	2,400	9,400	545,000	2018
		Adult soda consumption rate	% of adults	44	39.1	17.4	11.5	25.8	2018
	Sexual Activity	Teen births	births	523	350	39	23	1,963	2017
		Teen birth rate	per 1,000 population females aged 15-19 years	58.2	44.4	17.3	6.6	21.5	2017
	Tobacco Use	Adult smoking	adults	6,600	7,400	2,600	11,200	359,000	2018
		Adult smoking rate	% of adults	26.8	28.1	18.9	13.6	16.8	2018
		Smoking during pregnancy	births	219	264	24	22	865	2017
		Smoking during pregnancy rate	% of births	6.6	11.5	2.4	0.3	2.4	2017
Demography	Origin & Language	Foreign born	% of residents	4.08	3.01	9.24	11.98	20.64	2015-2019
		Limited English proficiency	% of residents	1.56	0.71	0.46	1.52	7.64	2015-2019
	Population	Percent of population	% of residents	4.52	0.63	18.97	77.91	33.28	2015-2019
		Population	residents	32,086	22,875	14,201	90,172	2,709,534	2015-2019
Mortality	Behavioral Health	Alcohol-induced mortality	deaths	15	13	6	10	223	2017
		Alcohol-induced mortality rate	per 100,000 population	9.7	8.8	5.5	3	8.5	2017
		Drug-induced mortality	deaths	104	45	12	23	770	2017
		Drug-induced mortality rate	per 100,000 population	62.8	33.4	11.4	5.4	28.4	2017
		Drug overdose mortality	deaths	101	44	12	23	762	2017
		Drug overdose mortality rate	per 100,000 population	60.8	32.7	11.4	5.4	28.1	2017
		Chronic liver disease and cirrhosis mortality	deaths	24	26	3	15	257	2017

Health Indicators (continued...)

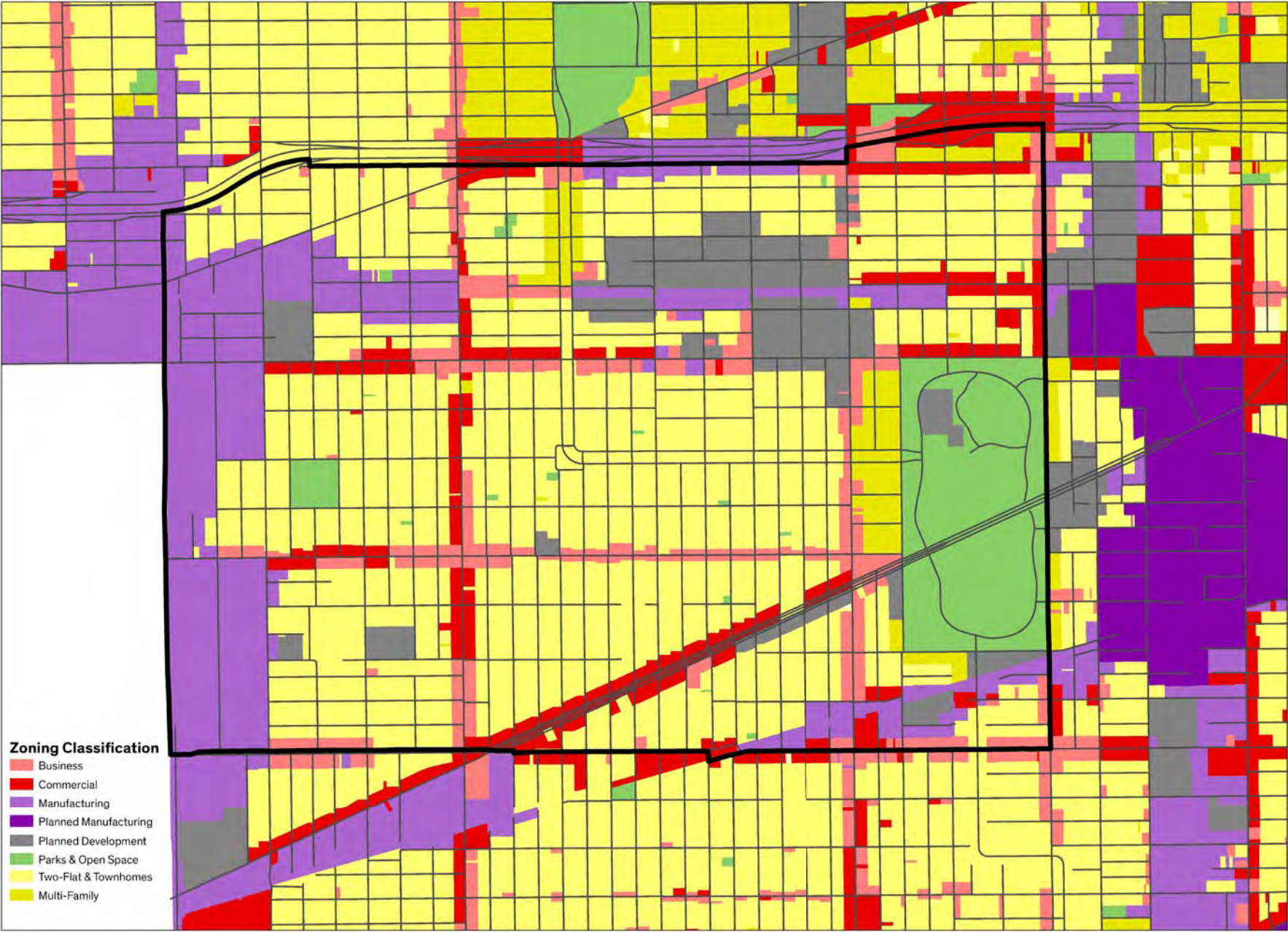
Category	Subcategory	Indicator	Units	North Lawndale	Comparison Communities				Time Period
					Englewood	Kenwood	Lake View	Chicago	
Mortality	Behavioral Health	Chronic liver disease and cirrhosis mortality rate	per 100,000 population	16.3	16.9	2.7	4.7	10.1	2017
		Suicide mortality	deaths	8	7	7	28	219	2017
		Suicide mortality rate	per 100,000 population	4.8	4.8	7.4	7.4	7.9	2017
	Chronic Disease	Alzheimer's disease mortality	deaths	29	27	19	30	537	2017
		Alzheimer's disease mortality rate	per 100,000 population	21.8	18.1	15.8	9.6	23.5	2017
		Female breast cancer mortality	deaths	30	28	25	32	353	2017
		Female breast cancer mortality rate	per 100,000 female population	21.1	19.1	25.2	10.9	25.6	2017
		Cancer mortality	deaths	366	327	195	277	4,246	2017
		Cancer mortality rate	per 100,000 population	254.1	224.3	174.8	94.6	179.2	2017
		Coronary heart disease mortality	deaths	159	197	85	164	2,265	2017
		Coronary heart disease mortality rate	per 100,000 population	112.5	135	75.2	54.7	96.6	2017
		Colorectal cancer mortality	deaths	47	33	17	28	443	2017
		Colorectal cancer mortality rate	per 100,000 population	32.7	22.3	14.3	8.7	18.8	2017
		Cervical cancer mortality	deaths	9	6	2	3	44	2017
		Cervical cancer mortality rate	per 100,000 population	5.7	4.7	1.7	1	3.1	2017
		Diet-related mortality	deaths	624	635	323	465	7,361	2017
		Diabetes mortality	deaths	51	44	21	28	614	2017
		Diabetes mortality rate	per 100,000 population	36.3	31.1	18.7	9.9	25.9	2017
		Diabetes-related mortality	deaths	126	127	43	76	1,416	2017
		Diabetes-related mortality rate	per 100,000 population	88.8	89	38.3	26.5	59.5	2017
		Diet-related mortality rate	per 100,000 population	434.2	437.2	287	156.3	312.2	2017
		Heart disease mortality	deaths	365	422	187	297	4,774	2017
		Heart disease mortality rate	per 100,000 population	251.7	288.5	164.9	97.7	201.3	2017
		Lung and bronchus cancer mortality	deaths	79	99	47	56	947	2017
		Lung and bronchus cancer mortality rate	per 100,000 population	55.8	67.1	41.4	19.5	40.4	2017
		Chronic lower respiratory disease mortality	deaths	39	63	21	79	660	2017
		Chronic lower respiratory disease mortality rate	per 100,000 population	27.2	43.2	19.1	27.6	28.8	2017
Nephritis, nephrotic syndrome and nephrosis mortality	deaths	47	29	14	17	451	2017		
Nephritis, nephrotic syndrome and nephrosis mortality rate	per 100,000 population	34.7	19.8	12.3	5.6	19.4	2017		

Health Indicators (continued...)

Category	Subcategory	Indicator	Units	North Lawndale	Comparison Communities				Time Period
					Englewood	Kenwood	Lake View	Chicago	
Mortality	Chronic Disease	Prostate cancer mortality	males	24	27	15	5	264	2017
		Prostate cancer mortality rate	per 100,000 male population	17.8	18.7	12.9	1.8	30.4	2017
		Stroke mortality	deaths	78	87	47	62	1,190	2017
		Stroke mortality rate	per 100,000 population	54.5	60.2	41.9	22	51.7	2017
		Tobacco-related mortality	deaths	470	476	243	347	6,107	2017
		Tobacco-related mortality rate	per 100,000 population	325.9	326	215	116.8	258.2	2017
	Infectious Disease	Influenza & pneumonia mortality	deaths	31	31	13	25	436	2017
		Influenza & pneumonia mortality rate	per 100,000 population	22	21	12.2	8.3	18.6	2017
	Injury & Violence	Homicide mortality	deaths	110	95	14	1	635	2017
		Accidents mortality	deaths	148	90	25	44	1,255	2017
		Firearm-related homicide mortality	deaths	101	86	12	0	578	2017
		Firearm-related homicide mortality rate	per 100,000 population	52.5	52.6	14.2	0	18.9	2017
		Homicide mortality rate	per 100,000 population	58	58.2	15.9	0.3	21	2017
		Injury mortality	deaths	235	166	42	49	2,137	2017
		Injury mortality rate	per 100,000 population	134.6	110.2	43.3	13.3	77.3	2017
		Motor vehicle crash mortality	deaths	23	17	8	10	189	2017
		Motor vehicle crash mortality rate	per 100,000 population	12.9	11.4	8.6	2.3	6.9	2017
	Maternal	Infant mortality	deaths	40	40	11	18	240	2017
		Infant mortality rate	per 1,000 live births	12	17.4	11.2	2.7	6.6	2017
	Quality of Life	Life expectancy	years	68.1	70.8	77.2	82	77.2	2017
Years of potential life lost			16,013	16,235	8,405	1,781	8,131	2017	

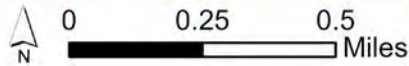
Source: Chicago Health Atlas, Chicago Department of Public Health; Population Health Analytics Metrics Evaluation (PHAME) Center, UIC School of Public Health

Zoning



- Zoning Classification**
- Business
 - Commercial
 - Manufacturing
 - Planned Manufacturing
 - Planned Development
 - Parks & Open Space
 - Two-Flat & Townhomes
 - Multi-Family

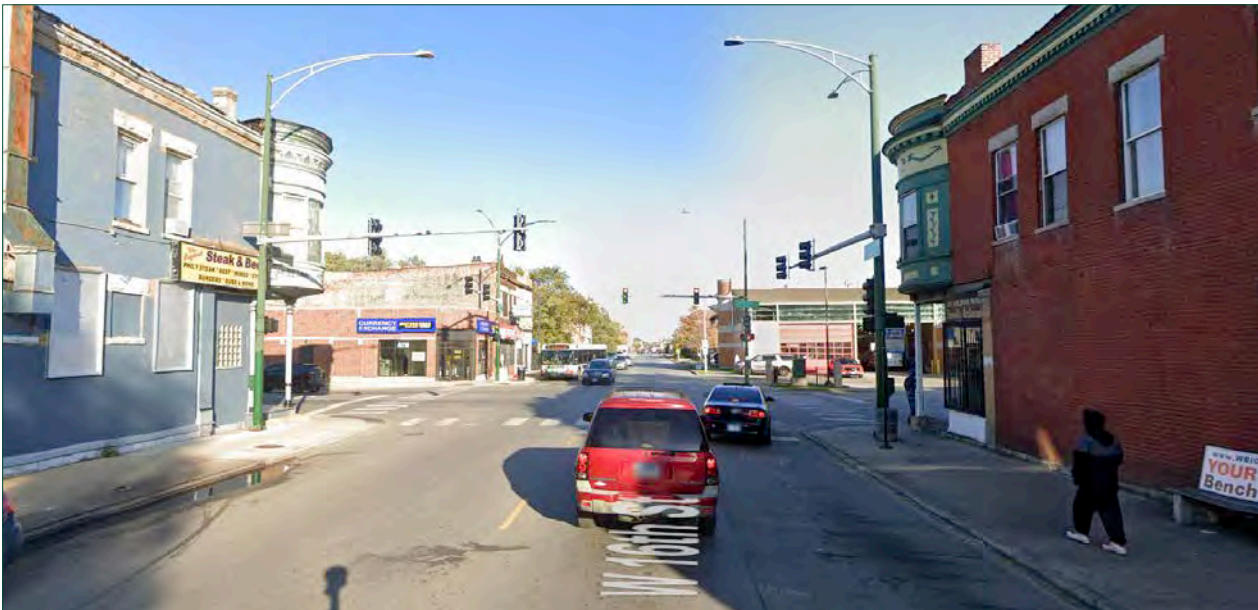
Map generated by Great Cities Institute



Streetscape Conditions



Roosevelt Road looking east from Independence Boulevard



16th Street looking east towards Pulaski Road

- North Lawndales streetscape varies greatly. Many of the commercial corridors are marked with many vacant lots interspersed with some intact historical buildings and newer construction
- Sidewalks are generally in a decent condition, though not optimal for pedestrians due to proximity to automobile traffic and an inconsistent streetwall to provide shelter from weather and shade.
- Street trees are almost non-existent compared to other commercial corridors.

Source: Google Streetview, 2021

Transportation Mode and Travel Times

Means of Transportation to Work for Workers 16 Years and Over		
Car, Truck, or Van:	7,925	58.8%
Drove Alone	6,805	50.5%
Carpooled	1,120	8.3%
Public Transportation (Includes Taxicab)	4,688	34.8%
Motorcycle	9	0.1%
Bicycle	64	0.5%
Walked	297	2.2%
Other Means	151	1.1%
Worked At Home:	354	2.6%

Travel Time to Work for Workers 16 Years and Over		
Did Not Work At Home:	13,134	97.4%
Less than 10 Minutes	719	5.3%
10 to 19 Minutes	1,984	14.7%
20 to 29 Minutes	2,080	15.4%
30 to 39 Minutes	2,909	21.6%
40 to 59 Minutes	2,716	20.1%
60 to 89 Minutes	1,900	14.1%
90 or More Minutes	826	6.1%
Worked At Home:	354	2.6%

Transportation Map (page 12)

The CTA blue line train runs along the north border of the LCDC region. The pink line train runs through the southern portion of the area. There is a Metra stop to the southeast of the area at Western Avenue and to the southwest at Cicero. Many bus lines run through the area, shown as green lines on the map.

The smaller circles represent a 1/4 mile radius from a train station, or roughly a five minute walk from the station. The larger circles represent a 1/2 mile radius from a train station, or roughly a ten minute walk from the station.

Transportation Mode

Just over half of workers drive alone to work. 34.8 percent rely on public transportation to get to work and 8.3 percent carpooled with someone else.

Travel Time to Work

Commute times vary throughout the community, with most workers having a commute under an hour to work. 20.2 percent of commutes take longer than an hour to get to work.

Source: 2015 - 2019 American Community Survey, 5-year estimates; U.S. Census Bureau

Environmental Conditions



Open space at the intersection of Douglas Boulevard and Independence Boulevard.



Vacant land at 5th Avenue between Kildare Avenue and Kostner Avenue.

- Air particulate matter is slightly higher (9.567 ppm) compared to the citywide average (9.429), however pollution levels are significantly higher in North Lawndale compared to wealthier areas like Lake View (9.195) due to the surrounding industrial areas. (see Health Indicators, page 18)
- North Lawndale has a lower traffic intensity (480) than the comparison communities, Lake View (1,686), Englewood (2,687), and Kenwood (1,494), meaning it is safer for pedestrians and bicyclists in regards to potential automobile accidents. (see Health Indicators, page 18)

Source: Chicago Health Atlas, Chicago Department of Public Health; Population Health Analytics Metrics Evaluation (PHAME) Center, UIC School of Public Health. Images: Google Streetview, 2021

Vacant Land



Map generated by Great Cities Institute

Legend

Vacant Land Types

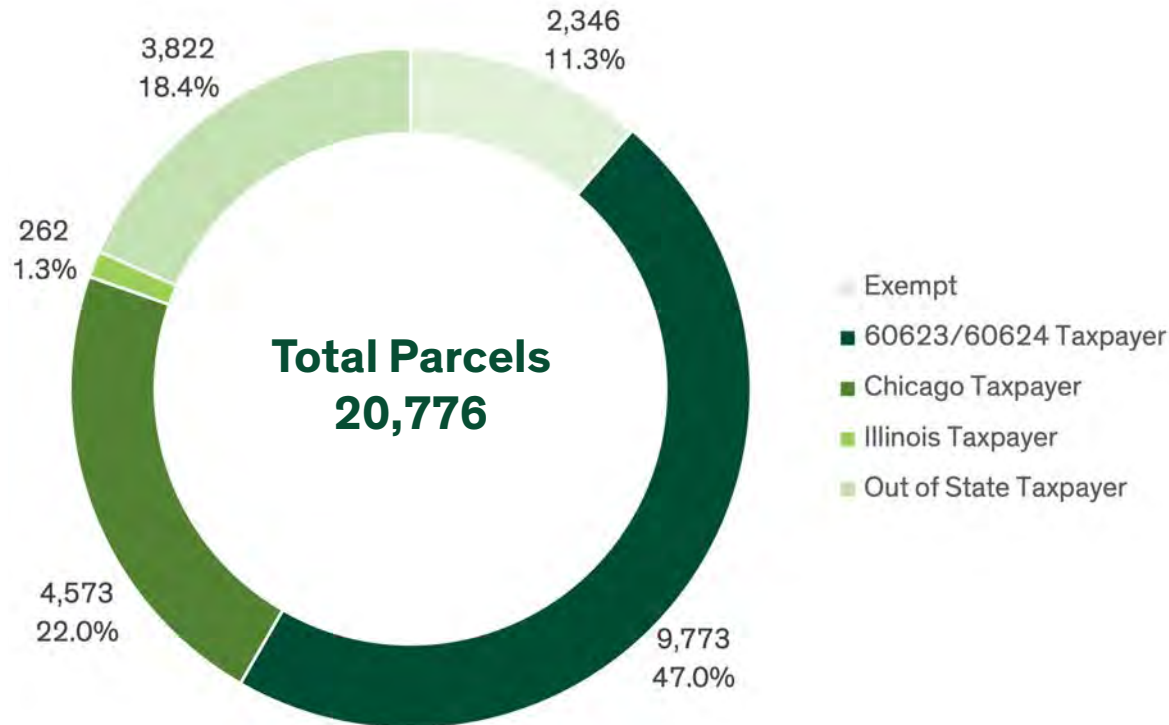
- 1-00 Vacant Land
- 1-90 Minor Improvement on Vacant Land
- Water
- Parks
- North Lawndale Study Area

- North Lawndale has an estimated 2,120 lots categorized as vacant land or minor improvement on vacant land which represents 7.8% of the total property in North Lawndale.

Source: Cook County Assessor's Office 2021 Data; Chicago Data Portal, City of Chicago

Taxpayer Analysis

Locality of Taxpayers for Parcels in North Lawndale



- There are 20,776 total parcels in North Lawndale.
- 47 percent of the taxpayers for parcels in North Lawndale also list their address as being located in the 60623 or 60624 ZIP codes which comprise of the majority of North Lawndale.
- 22 percent of taxpayers list their address as elsewhere within the City of Chicago.
- 1.3 percent of taxpayers list their address within the State of Illinois.
- 18.4 percent of taxpayers list their address as out of state.
- 11.3 percent of parcels in North Lawndale are listed as exempt from taxes, including parcels owned by railroads.

Source: Cook County Assessor's Office

Cultural Assets

Parks

- Douglass Park, 1401 S Sacramento Dr
- Peace Park of North Lawndale, 2101 S Spaulding Ave.
- Homan Playground Park, 2140 S Homan Ave.
- London (Louis) Park, 1654 S Trumbull Ave.
- Park 519, 1944 S St. Louis Ave
- Christiana Park, 1533 S Christiana Ave.
- Gingko Playground Park, 1448 S Trumbull Ave.
- Hornbeam Playground Park, 1426 Hamlin Ave.
- Ninebark Playground Park, 1447 S Harding Ave.
- Unity Park, 1900 S Kostner Ave.
- Violet Playground Park, 4120 W Taylor St.
- Keeler (Cyrus) Park, 1243 S Keeler Ave.
- Millard (Alden) Park, 1331 S Millard Ave.
- Park 500, 730 S Springfield Ave.
- Franklin (Benjamin) Park, 4320 W 15th St.
- Homan Square Park, 2559 W Arthington ST
- Boler (Leo Roscoe, Sr.) Park, 3601 W Arthington St.
- Magnolia Playlot Park, 3224 W Flournoy St.

Chicago Boulevards

- Independence BLVD
- Douglas BLVD

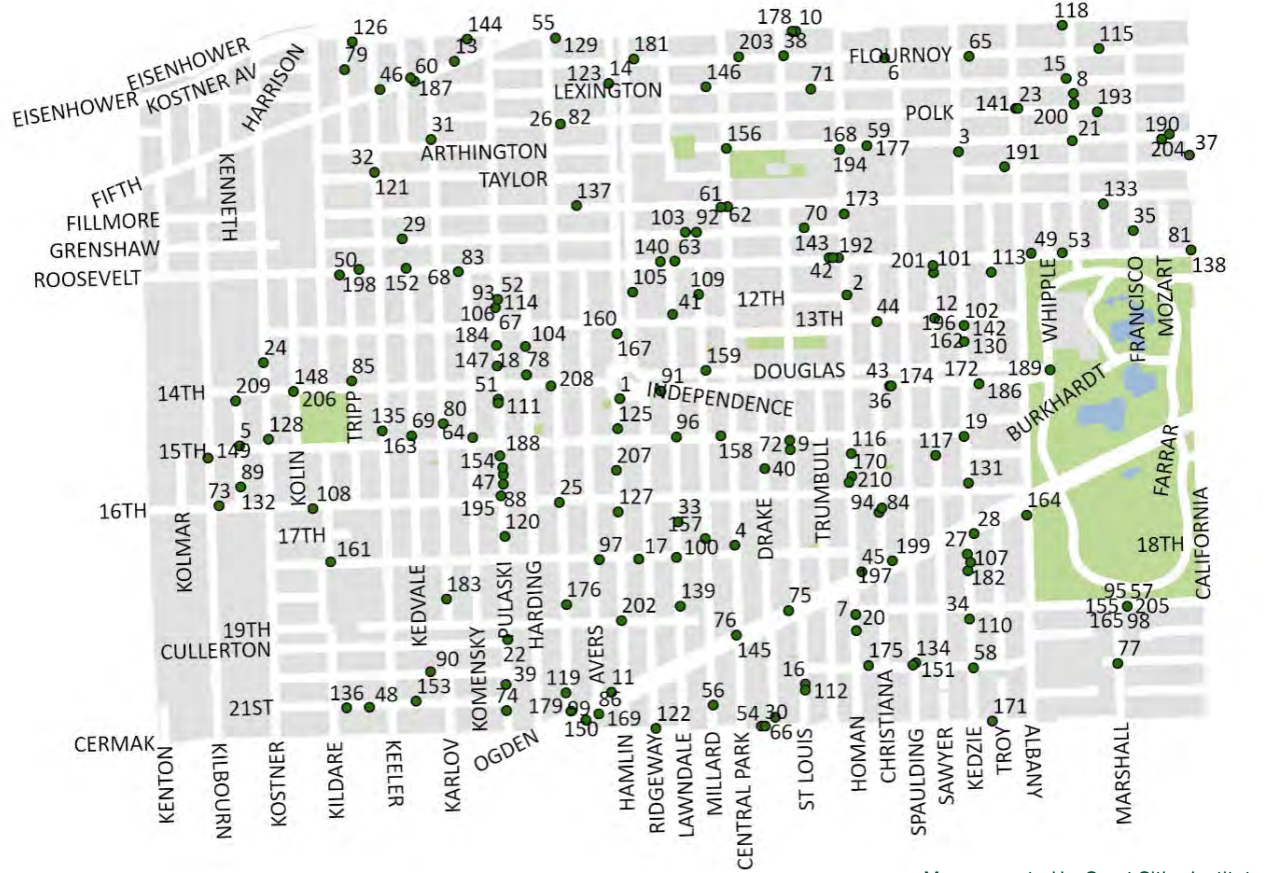
Chicago Public Library

- Douglass Branch, 3353 W 13th St.

Museums

- Lubavitcher Redde's Residence during Chicago visit, 3639 W Douglas BLVD
- Historic Sears Sunken Garden, 3312 W Arthington St
- Candor Health Education, 3517 W Arthington ST
- Free Spirit Media, 906 S Homan Ave
- Homan Rails Farm, 910 S Homan Ave

2018 Non-Profit Organizations



#	Organization Name	Organization Description
1	Greater Garfield Park M B Church	Christian
2	Christian Valley Baptist Church	Protestant
3	New Progressive St James Missionary Baptist Church	Christian
4	Westside Center of Trust for Better Living Inc	Named Trusts/Foundations N.E.C.
5	Grace Memorial Baptist Church	Protestant
6	Midwest Community Council	Community Service Clubs (Kiwanis, Lions, Jaycees, etc.)
7	Friendly Pentecostal Council of the Assembly of God	Protestant
8	Pleasant Grove Missionary Baptist Church	Christian
9	Christ Ministries Pentecostal Church of God in Christ	Christian
10	The Spirit of Truth M B Church C/O Robert L Patterson	Christian
11	Operation Brotherhood West Center	Senior Centers/Services
12	Open Door Baptist Church Corporation	Protestant
13	Christ Faith Christian Church	Christian
14	Greater Rock Development Corporation	Community, Neighborhood Development, Improvement
15	Lighthouse Gospel Missionary Baptist Church	Protestant
16	Westlawn Gospel Chapel	Christian
17	Israel of Gods Church the Wha	Jewish
18	Work of His Hands Ministries	Religion Related, Spiritual Development N.E.C.
19	Holy Sanctuary Community Church	Christian
20	Greater Bethel Missionary Baptist Church	Protestant
21	Saint James Unity Baptist Church	Christian
22	Jesus Christ Is Lord Fellowship	Christian
23	Westside Federation of Chicago	Community, Neighborhood Development, Improvement
24	New Age Services Corporation	Alcohol, Drug Abuse (Treatment Only)
25	New Rising Sun M B Church	Christian
26	North Lawndale Greening Committee	Environmental Beautification
27	Healing Wings of Glory Inc	Christian
28	Greater Christian Fellowship Missionary Baptist Church	Protestant
29	First Grace Missionary Baptist Church	Christian

Source: 2018 Guidestar Chicago MSA

2018 Non-Profit Organizations (continued...)

#	Organization Name	Organization Description
30	Shield of Faith Ministries	Christian
31	Church of the Living God I Am Love	Christian
32	First Corinthians M B Church	Christian
33	Greater Progressive Mb Church	Christian
34	Revelation M B Church	Christian
35	Gods Appointed Temple True Church	Christian
36	Thompson Hopewell United Primitive Baptist Church	Christian
37	Holy Temple Second Chance Ministries	Christian
38	Faith Community Baptist Church	Christian
39	Holy Ground Church of the Living God	Christian
40	Christ Centered Ministries	Christian
41	Church of the Living God Temple 93 Cwff	Christian
42	Faith Healing Temple Apostolic Church	Christian
43	Angels in Flight	Children's and Youth Services
44	MT Clearstone Community of Christ Church	Protestant
45	MT Tabor M B Church	Christian
46	Taps Winds & Keys School of Music Inc	Performing Arts Schools
47	Regular Grand Lodge of Illinois	Fraternal Societies
48	A Hand Up Recovery Homes NFP	Temporary Shelter For the Homeless
49	Apostolic Whole Truth Church	Protestant
50	Mount Calvary Missionary Baptist Church	Protestant
51	Zion Temple Church of God in Christ	Protestant
52	Community Services West	Employment Procurement Assistance and Job Training
53	Cathedral of Love Christian Church	Christian
54	Sure Deliverance M B Church Incorporated	Christian
55	Church of God in Christ	Protestant
56	The Learning Center House of Connections	Alcohol, Drug Abuse (Treatment Only)
57	Saint Anthony Health Ministries	Human Service Organizations
58	Illinois Manufacturing Foundation	Employment Training
59	Fathers Who Care	Human Service Organizations
60	Temple of Deliverance for Gospel Assembly	Christian
61	Sunrise Baptist Church	Protestant

#	Organization Name	Organization Description
62	Ucan	Children's and Youth Services
63	Sunshine Missionary Baptist Church Inc	Protestant
64	Deliverance Temple Church of the Apostolic Faith	Protestant
65	Freedom International Outreach Ministries	Democracy, Civil Society Development
66	Celestial Ministries Association	Human Service Organizations
67	Lawndale Christian Reformed Church	Protestant
68	Chicago-Midwest Section of the National Council of Negro Women	Women's Rights
69	Undershepherd Pentecostal Prayer Ministries	Protestant
70	St Timothy House of Prayer	Christian
71	New Life Baptist Church of Greater Chicago	Christian
72	Evangelistic Deliverance Temple Outreach Ministry	Protestant
73	Love Outreach Church	Christian
74	Grace and Glory Tabernacle Mbc Missionary Baptist Church	Protestant
75	ChicagO-Lawndale Amachi Mentoring Program Lamp	Adult, Child Matching Programs
76	Westside Association for Community Action Foundation	Human Service Organizations
77	Healthy Families Chicago	Family Services
78	Clair House NFP Inc	Public Housing
79	Home of Life Christian Ministries	Religion Related, Spiritual Development N.E.C.
80	Faith and Prayer Temple of Truth Ministries	Christian
81	New Rhema Harvest Kingdom of God Ministries	Protestant
82	North Lawndale Historical and Cultural Society Inc	Children's and Youth Services
83	Sankofa Safe Child Inc	Family Services
84	Holy Ground Missionary Baptist Church	Christian
85	Empire Washita De Dugdahmoundyah Ministry	Christian
86	The House Development Corporation NFP	Performing Arts Centers
87	The House Covenant Church Chicago IL	Christian
88	Anointed Vessel Ministries	Christian
89	Position of Pressure NFP	Protection Against and Prevention of Neglect, Abuse, Exploitation
90	Sisters in Sobriety Transformedanointed & Healed	Alcohol, Drug and Substance Abuse, Dependency Prevention and Treatment

#	Organization Name	Organization Description
91	Frazier Academy Design Team Inc	Arts Education/Schools
92	Hojo Family Assistance Program	Human Services - Multipurpose and Other N.E.C.
93	Young Mens Educational Network	Educational Services and Schools – Other
94	North Lawndale College Preparatory Charter High School	Charter Schools
95	Saint Anthony Health Affiliates	Community Health Systems
96	Direct Thy Path M B Church	Christian
97	Agape Church Baptist	Protestant
98	Saint Anthony Hospital	Community Health Systems
99	Lawndale Community Church	Christian
100	Lawndale Community Day Care	Child Day Care
101	Sawyer Gardens Inc	Housing Development, Construction, Management
102	Gift House Inc	Public Health Program
103	Third Gear Youth Leadership Organization	Leadership Development
104	Reaching and Empowering Youth	Educational Services and Schools - Other
105	Lawndale Missionary Baptist Church	Protestant
106	Community Christian Alternative Academy	Secondary/High School
107	Douglas Park Baptist Church	Protestant
108	16Th Street Church of God in Christ	Protestant
109	New Saint John Community Mb Church	Christian
110	Worship Warming Center	Protestant
111	Zion Temple Community Development Corporation	Community, Neighborhood Development, Improvement
112	King Foundation Inc	Private Grantmaking Foundations
113	Peoples Development Group	Senior Citizens' Housing/Retirement Communities
114	Chicago West Side Christian School Association	Elementary, Secondary Ed
115	New Life in Christ Ministries	Protestant
116	New Macedonia M B Church	Christian
117	Siloam Baptist Church	Christian
118	The Old Original Missionary Baptist Church	Protestant
119	Woman of Steele Foundation	Scholarships, Student Financial Aid, Awards
120	Pillar of Truth Ministries	Human Service Organizations
121	First Corinthian Missionary Baptist Church Inc	Protestant

2018 Non-Profit Organizations (continued...)

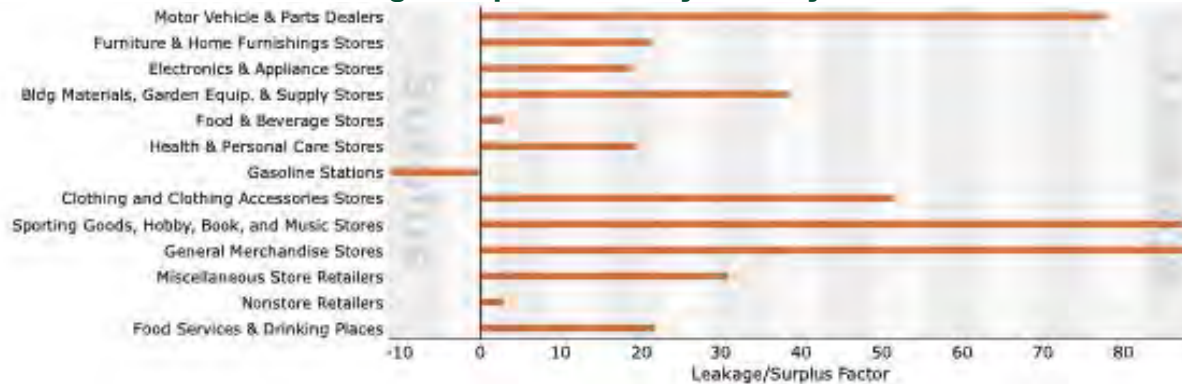
#	Organization Name	Organization Description
122	True Foundation Full Gospel Ministries	Christian
123	Biblical Exposition Conference Inc	Management & Technical Assistance
124	Lawndale Christian Supporting Corporation	Christian
125	Divine Destiny Christian Ministries	Christian
126	New Rock of Ages M B Church Inc	Christian
127	Greater Love Church of God in Christ	Unknown
128	St Anthony Willing Workers	Labor Unions/Organizations
129	Gt Community Services	Human Service Organizations
130	Chef Jonathans Lunch Box NFP	Nutrition Programs
131	Revelation Church of God in Christ Fifth Jurisdiction of Illinois	Protestant
132	Franklin Park Advisory Council	Amateur Sports Clubs, Leagues, N.E.C.
133	We Run Twelve	Human Services - Multipurpose and Other N.E.C.
134	Chicago Urban Art Retreat Center	Arts, Cultural Organizations - Multipurpose
135	Pentecostal Church of Holiness	Protestant
136	K-Town Historic District Association	Historical Societies and Related Activities
137	Women Making A Difference Ministries International NFP	Religion Related, Spiritual Development N.E.C.
138	Michael Gray Foundation of Dreams	Environmental Beautification
139	Mini Medical Program of North Lawndale	Community, Neighborhood Development, Improvement
140	Roll Call	Personal Social Services
141	Faith With Works	Christian
142	Sarah Robinson Group NFP	Community Improvement, Capacity Building N.E.C.
143	Gardeners	Educational Services and Schools - Other
144	City of Light Christian Arts Center	Christian
145	Chicago Family Partnership	Human Service Organizations
146	Remember Project Inc	Philanthropy / Charity / Voluntarism Promotion (General)
147	Redeemed Tabernacle Church of God in Christ	Protestant
148	Hopewell Primitive Baptist Church	Protestant
149	Stone Water Group NFP	Water Resource, Wetlands Conservation and Management
150	The House Evangelical Covenant Church	Christian
151	Hoopadmix Foundation Corp	Basketball

#	Organization Name	Organization Description
152	Far West Church of Christ	Protestant
153	Healing Tree Community Foundation	Alliance/Advocacy Organizations
154	All Nations Church of God in Christ	
155	Chicago Southwest Community Organization	Housing Owners, Renters Organizations
156	Homan Square Park Advisory Counsel	Single Organization Support
157	City Harvest Headstart Outreach Ministry	Christian
158	Harvest for the World Church	Christian
159	Stone Temple Missionary Baptist Church	
160	Greater Galilee Baptist Church	Protestant
161	Greater Mount Pleasant Baptist Church	Protestant
162	House of Abundance Treasure NFP	Human Services - Multipurpose and Other N.E.C.
163	Forgiven By Christ Missionary Baptist Church	Protestant
164	Westside Cultural Foundation	Arts, Cultural Organizations - Multipurpose
165	Chicago Southwest Development Corporation	Community, Neighborhood Development, Improvement
166	Community Services West Career Academy	Secondary/High School
167	Dorcas Helping Hands Inc	Human Service Organizations
168	Lawndale Business Renaissance Association	Economic Development
169	Ccda Flourishing Communities	Other Youth Development N.E.C.
170	Men Making A Difference	Community, Neighborhood Development, Improvement
171	Oral Health Education CDC	Health Support Services
172	Saint Agatha Dream Builders Association NFP	Other Housing, Shelter N.E.C.
173	New Covenant Community Development	Rural
174	Thompson Hopewell Primitive Baptist Church	Protestant
175	New Community Church	Protestant
176	Living Art NFP	Performing Arts
177	Artforms-22	Arts Education/Schools
178	Baptist Pastors Conference of Chicago and Vicinity	Christian
179	Lawndale Christian Health Center	Health Treatment Facilities (Primarily Outpatient)
180	Lawndale Christian Development Corporation	Economic Development

#	Organization Name	Organization Description
181	North Lawndale Employment Network	Employment, Job Related N.E.C.
182	Women Bridging the Gap	Family Services
183	A Voice for the Children Ministry	Christian
184	Improveu	Scholarships, Student Financial Aid, Awards
185	Neighborhood Ministries Inc	Neighborhood Center, Settlement House
186	Center for Catholic Social Thought and Action	Christian
187	Nonprofits Matter Inc	Fund Raising and/or Fund Distribution
188	Better Boys Foundation	Fund Raising Organizations That Cross Categories includes Community Funds/Trusts and Federated Giving Programs) e.g. United Way
189	Girls in the Game NFP	Youth Development Programs
190	Community and Family Partners	Human Service Organizations
191	Chicago Recovery Alliance	Public Health Program
192	I Am Able Center for Family Development	Mental Health Treatment
193	Umoja Student Development Corporation	Educational Services and Schools - Other
194	Free Spirit Media NFP	Arts Education/Schools
195	People of Vision Community Development Corp	Professional Societies & Associations
196	Unbound Music NFP	Music
197	Legacy Charter School Support Corporation	Single Organization Support
198	United Baptist Church	Philanthropy / Charity / Voluntarism Promotion (General)
199	Legacy Charter School	Charter Schools
200	Altus Academy	Elementary, Secondary Ed
201	Y E M B A	Nonmonetary Support N.E.C.
202	Creative Mindz Developmental Inc	Dance
203	Mujaani Insanun Instruct and Rescue the Youth Inc	Philanthropy / Charity / Voluntarism Promotion (General)
204	Mamie D Hayes Educational Foundation Inc	Educational Services and Schools - Other
205	Saint Anthony Hospital Foundation	Fund Raising and/or Fund Distribution
206	Village of Hope Learning Center	Child Day Care
207	Lawndale Christian Legal Center	Legal Services
208	Tabernacle of Prayer Ministries International	Christian
209	Bracey Phillips Community Dev Corp	Employment Training
210	North Lawndale Eagles Youth Programs	Youth Development Programs

Retail Marketplace Profile

2017 Leakage/Surplus Factor by Industry Subsector



2017 Leakage/Surplus Factor by Industry Group



Data Note

Supply (retail sales) estimates sales to consumers by establishments. Sales to businesses are excluded. Demand (retail potential) estimates the expected amount spent by consumers at retail establishments. Supply and demand estimates are in current dollars.

The Leakage/Surplus Factor presents a snapshot of retail opportunity. This is a measure of the relationship between supply and demand that ranges from +100 (total leakage) to -100 (total surplus). A positive value represents 'leakage' of retail opportunity outside the trade area. A negative value represents a surplus of retail sales, a market where customers are drawn in from outside the trade area.

The Retail Gap represents the difference between Retail Potential and Retail Sales. Esri uses the North American Industry Classification System (NAICS) to classify businesses by their primary type of economic activity. Retail establishments are classified into 27 industry groups in the Retail Trade sector, as well as four industry groups within the Food Services & Drinking Establishments subsector.

Source: Esri Business Analyst 2017 Retail Marketplace

Retail Marketplace Profile (continued...)

	NAICS	Demand (Retail Potential)	Supply (Retail Sales)	Retail Gap	Leakage/Surplus Factor	Number of Businesses
2017 Industry Summary						
Total Retail Trade and Food & Drink	44-45,722	\$263,781,335	\$139,668,825	\$124,112,510	30.8	134
Total Retail Trade	44-45	\$237,570,069	\$122,905,614	\$114,664,455	31.8	96
Total Food & Drink	722	\$26,211,266	\$16,763,211	\$9,448,055	22.0	38
	NAICS	Demand (Retail Potential)	Supply (Retail Sales)	Retail Gap	Leakage/Surplus Factor	Number of Businesses
2017 Industry Group						
Motor Vehicle & Parts Dealers	441	\$48,079,005	\$5,075,624	\$42,103,381	77.9	6
Automobile Dealers	4411	\$40,030,847	\$3,247,124	\$36,783,723	85.0	3
Other Motor Vehicle Dealers	4412	\$3,615,941	\$0	\$3,615,941	100.0	0
Auto Parts, Accessories & Tire Stores	4413	\$4,432,217	\$2,798,500	\$1,703,717	23.8	3
Furniture & Home Furnishings Stores	442	\$7,523,380	\$4,865,486	\$2,657,894	21.5	4
Furniture Stores	4421	\$4,657,632	\$4,865,486	-\$207,854	-2.2	4
Home Furnishings Stores	4422	\$2,865,748	\$0	\$2,865,748	100.0	0
Electronics & Appliance Stores	443	\$8,723,016	\$5,933,332	\$2,789,684	19.0	4
Bldg Materials, Garden Equip. & Supply Stores	444	\$13,678,089	\$6,034,756	\$7,643,333	38.5	10
Bldg Material & Supplies Dealers	4441	\$12,203,713	\$5,669,752	\$6,533,961	36.6	9
Lawn & Garden Equip & Supply Stores	4442	\$1,374,376	\$365,004	\$1,009,372	58.0	1
Food & Beverage Stores	445	\$42,083,127	\$39,742,563	\$2,340,564	2.9	32
Grocery Stores	4451	\$37,099,294	\$32,148,596	\$4,950,698	7.1	27
Specialty Food Stores	4452	\$2,208,459	\$1,749,723	\$458,736	11.6	1
Beer, Wine & Liquor Stores	4453	\$2,775,374	\$5,844,244	-\$3,068,870	-35.8	4
Health & Personal Care Stores	446,4461	\$15,790,987	\$10,613,018	\$5,177,949	19.6	12
Gasoline Stations	447,4471	\$25,557,927	\$32,101,437	-\$6,543,510	-11.3	8
Clothing & Clothing Accessories Stores	448	\$13,071,746	\$4,150,732	\$8,921,014	51.8	6
Clothing Stores	4481	\$8,922,718	\$3,306,598	\$5,616,120	45.9	5
Shoe Stores	4482	\$1,923,679	\$844,134	\$1,079,545	39.0	1
Jewelry, Luggage & Leather Goods Stores	4483	\$2,225,349	\$0	\$2,225,349	100.0	0
Sporting Goods, Hobby, Book & Music Stores	451	\$6,097,705	\$397,908	\$5,699,797	87.7	1
Sporting Goods/Hobby/Musical Instr Stores	4511	\$4,953,820	\$397,908	\$4,555,912	85.1	1
Book, Periodical & Music Stores	4512	\$1,143,885	\$0	\$1,143,885	100.0	0
General Merchandise Stores	452	\$42,015,323	\$2,477,130	\$39,538,193	88.9	4
Department Stores Excluding Leased Depts.	4521	\$29,589,143	\$0	\$29,589,143	100.0	0
Other General Merchandise Stores	4529	\$12,426,180	\$2,477,130	\$9,949,050	66.8	4
Miscellaneous Store Retailers	453	\$8,591,710	\$4,525,836	\$4,065,874	31.0	7
Florists	4531	\$464,197	\$0	\$464,197	100.0	0
Office Supplies, Stationery & Gift Stores	4532	\$1,488,869	\$0	\$1,488,869	100.0	0
Used Merchandise Stores	4533	\$855,655	\$1,110,540	-\$254,885	-13.0	3
Other Miscellaneous Store Retailers	4539	\$5,782,989	\$3,415,296	\$2,367,693	25.7	4
Nonstore Retailers	454	\$6,458,074	\$6,087,792	\$370,282	3.0	2
Electronic Shopping & Mail-Order Houses	4541	\$4,950,893	\$4,588,809	\$362,084	3.8	1
Vending Machine Operators	4542	\$193,253	\$1,498,983	-\$1,305,730	-77.2	1
Direct Selling Establishments	4543	\$1,313,928	\$0	\$1,313,928	100.0	0
Food Services & Drinking Places	722	\$26,211,266	\$16,763,211	\$9,448,055	22.0	38
Special Food Services	7223	\$631,748	\$708,486	-\$76,738	-5.7	3
Drinking Places - Alcoholic Beverages	7224	\$884,627	\$311,355	\$573,272	47.9	1
Restaurants/Other Eating Places	7225	\$24,694,891	\$15,743,370	\$8,951,521	22.1	34

In the Retail Gap column, positive dollar numbers (green) indicate how much is spent outside of the market area by residents. Negative dollar numbers (red) indicate a saturated market for that category within the market area.

The Leakage/Surplus Factor column indicates the degree of leakage/surplus in the community. A positive (green) factor of 100.0 means 100% of resident dollars for that category are spent outside of the market area. Conversely, a negative (red) factor indicates a surplus of spending within the market area (i.e. outside dollars being spent within the area). A zero would indicate adequate availability within the market area for residents, but that the category is not attracting outside dollars.

- There is a lack of nearly every category of retail goods and services available within North Lawndale, leading to a leakage of an estimated \$124 million dollars from the community every year.
- This lack of businesses leads to a large outflow of money from the community, but also opportunities for new businesses that would be successful within the community.
- Much of this leakage is due to the lack of an identifiable retail corridor or center within the community. Residents largely have to leave the community to buy most goods and services.

Source: Esri Business Analyst 2017 Retail Marketplace

Types of Businesses by NAICS Codes, 2017

by NAICS Codes	Businesses		Employees	
	Number	Percent	Number	Percent
Agriculture, Forestry, Fishing & Hunting	1	0.2%	2	0.0%
Mining	0	0.0%	0	0.0%
Utilities	0	0.0%	0	0.0%
Construction	32	5.4%	564	6.4%
Manufacturing	41	6.9%	1,386	15.8%
Wholesale Trade	6	1.0%	69	0.8%
Retail Trade	72	12.2%	407	4.6%
Motor Vehicle & Parts Dealers	5	0.8%	31	0.4%
Furniture & Home Furnishings Stores	2	0.3%	13	0.1%
Electronics & Appliance Stores	1	0.2%	5	0.1%
Bldg Material & Garden Equipment & Supplies Dealers	6	1.0%	25	0.3%
Food & Beverage Stores	25	4.2%	157	1.8%
Health & Personal Care Stores	8	1.4%	41	0.5%
Gasoline Stations	5	0.8%	23	0.3%
Clothing & Clothing Accessories Stores	4	0.7%	15	0.2%
Sport Goods, Hobby, Book, & Music Stores	2	0.3%	19	0.2%
General Merchandise Stores	4	0.7%	18	0.2%
Miscellaneous Store Retailers	7	1.2%	36	0.4%
Nonstore Retailers	3	0.5%	24	0.3%
Transportation & Warehousing	10	1.7%	48	0.5%
Information	13	2.2%	63	0.7%
Finance & Insurance	13	2.2%	56	0.6%
Central Bank/Credit Intermediation & Related Activities	3	0.5%	21	0.2%
Securities, Commodity Contracts & Other Financial Investments & Other	4	0.7%	18	0.2%
Insurance Carriers & Related Activities; Funds, Trusts & Other Financial	6	1.0%	17	0.2%
Real Estate, Rental & Leasing	25	4.2%	109	1.2%
Professional, Scientific & Tech Services	26	4.4%	136	1.6%
Legal Services	1	0.2%	5	0.1%
Management of Companies & Enterprises	0	0.0%	0	0.0%
Administrative & Support & Waste Management & Remediation Services	16	2.7%	113	1.3%
Educational Services	44	7.4%	1,946	22.2%
Health Care & Social Assistance	55	9.3%	1,252	14.3%
Arts, Entertainment & Recreation	5	0.8%	49	0.6%
Accommodation & Food Services	32	5.4%	301	3.4%
Accommodation	0	0.0%	0	0.0%
Food Services & Drinking Places	32	5.4%	301	3.4%
Other Services (except Public Administration)	149	25.2%	773	8.8%
Automotive Repair & Maintenance	22	3.7%	94	1.1%
Public Administration	16	2.7%	1,389	15.9%
Unclassified Establishments	35	5.9%	100	1.1%
Total	591	100.00%	8,763	100.00%

Source: Esri Business Analyst 2017

Business Inventory, 2017

SIC Code	Business Name	Employees	Sales (\$000)
521101	QUALITY GARAGE & GRGE GATE PRO W 16TH ST CHICAGO, IL 60623	3	\$1,021.
801104	ACCESS COMMUNITY HEALTH NTRWK W 16TH ST CHICAGO, IL 60623	8	\$1,664.
591205	VIKOL PHARMACY INC W 16TH ST CHICAGO, IL 60623	3	\$735.
811198	LAWNDALE CHRISTIAN LEGAL CTR S HAMLIN AVE CHICAGO, IL 60623	2	\$578.
591205	DEL-KAR PHARMACY INC W 16TH ST CHICAGO, IL 60623	3	\$735.
175107	GARAGE DOOR BROKEN SPG RPLCMNT W 16TH ST CHICAGO, IL 60623	2	\$328.
999977	YOUNG PROFESSIONALS-NORTH W 16TH ST CHICAGO, IL 60623	0	\$0.
999977	BOYCE ENTERPRISE LLC W 16TH ST CHICAGO, IL 60623	0	\$0.
866107	GREATER LOVE COGIC S HAMLIN AVE CHICAGO, IL 60623	2	\$0.
999977	KING LEGACY LP W 16TH ST CHICAGO, IL 60623	0	\$0.

SIC Code	Business Name	Employees	Sales (\$000)
541105	LONGDALE KWIK MARKET INC W 16TH ST CHICAGO, IL 60623	4	\$1,023.
999977	OLAMIR INC S LAWNDALE AVE CHICAGO, IL 60623	0	\$0.
999977	VANDI LLC S LAWNDALE AVE CHICAGO, IL 60623	0	\$0.
821103	KIPP ASCEND MIDDLE SCHOOL S AVERS AVE CHICAGO, IL 60623	50	\$0.
171102	OPULNCE HEATING & CONSTR CHICAGO, IL 60623	4	\$655.
546102	SWEET ON ME CAKES CHICAGO, IL 60623	5	\$304.
912101	DAVIS BROKERS TWO S MILLARD AVE CHICAGO, IL 60623	3	\$0.
999977	JUNE ANNETTE BARRETT CO S MILLARD AVE CHICAGO, IL 60623	0	\$0.
551101	DELL & BROTHERS S PULASKI RD CHICAGO, IL 60623	3	\$1,736.
792211	LIVIN CLEAN ENTERTAINMENT S PULASKI RD CHICAGO, IL 60623	3	\$229.
999977	CHITOWN STAYS LLC S CENTRAL PARK AVE CHICAGO, IL 60623	0	\$0.

SIC Code	Business Name	Employees	Sales (\$000)
581208	ZANNO'S FISH & CHICKEN S PULASKI RD CHICAGO, IL 60623	5	\$298.
734201	PETTY'S EXTERMINATING CO S PULASKI RD CHICAGO, IL 60623	12	\$1,617.
609901	CURRENCY EXCHANGE INTL S PULASKI RD CHICAGO, IL 60623	4	\$2,828.
609901	16-PYLASKI GGG CURRENCY EXCHNG S PULASKI RD CHICAGO, IL 60623	4	\$2,828.
866107	PILLAR OF TRUTH CHURCH S PULASKI RD CHICAGO, IL 60623	2	\$0.
792207	LIVING ART NFP S SPRINGFIELD AVE CHICAGO, IL 60623	4	\$305.
581208	CARRASCO GRILL S PULASKI RD CHICAGO, IL 60623	5	\$298.
801104	MINI MEDICAL PRGM-NORTH LWNDL S LAWNDALE AVE CHICAGO, IL 60623	7	\$1,456.
835101	CREATIVE MINDZ DEVELOPMENTAL S HAMLIN AVE CHICAGO, IL 60623	8	\$130.
866107	GETHSEMANE STAR BAPTIST CHURCH W 15TH ST CHICAGO, IL 60623	12	\$0.

Business Inventory (continued...)

SIC Code	Business Name	Employees	Sales (\$000)
581208	NEW PINE VALLEY RESTAURANT S PULASKI RD CHICAGO, IL 60623	5	\$298.
835101	LITTLE ANGELS HOME DAYCARE S CENTRAL PARK AVE CHICAGO, IL 60623	8	\$130.
364101	B & J LIVERY S PULASKI RD CHICAGO, IL 60623	5	\$885.
753801	TRUE LINE INC S PULASKI RD CHICAGO, IL 60623	3	\$372.
866107	STONE TEMPLE BAPTIST CHURCH W DOUGLAS BLVD CHICAGO, IL 60623	12	\$0.
873303	JOSEPH KELLMAN FAMILY FNDTN S PULASKI RD CHICAGO, IL 60623	4	\$0.
861102	BETTER BOYS FOUNDATION S PULASKI RD CHICAGO, IL 60623	30	\$0.
152144	L & M REMODELING S PULASKI RD CHICAGO, IL 60623	3	\$1,001.
866107	HARDING STREET CHURCH OF GOD W 14TH ST CHICAGO, IL 60623	2	\$0.
655202	CHICAGO METRO DEV ASSOC S MILLARD AVE CHICAGO, IL 60623	4	\$1,524.

SIC Code	Business Name	Employees	Sales (\$000)
912104	CHICAGO BUREAU OF SANITATION S PULASKI RD CHICAGO, IL 60623	18	\$0.
866107	PRAYER BAND GOSPEL HEALING S PULASKI RD CHICAGO, IL 60623	3	\$0.
866107	CHRIST CENTERED MINISTRIES S DRAKE AVE CHICAGO, IL 60623	2	\$0.
866110	INTERVARSITY S DRAKE AVE CHICAGO, IL 60623	4	\$0.
839998	GRAVES JOHNSON & ASSOC S KOMENSKY AVE CHICAGO, IL 60623	1	\$0.
839998	UP BY GRACE INC S HAMLIN AVE CHICAGO, IL 60623	6	\$0.
872102	HARDMAN BUSINESS ASSOC S KOMENSKY AVE CHICAGO, IL 60623	1	\$198.
866107	GREATER GALILEE MSSNRY BAPT S INDEPENDENCE BLVD CHICAGO, IL 60623	2	\$0.
869903	DORCAS HELPING HANDS INC S INDEPENDENCE BLVD CHICAGO, IL 60623	2	\$0.
541105	GROCERY STORE S PULASKI RD CHICAGO, IL 60623	3	\$767.

SIC Code	Business Name	Employees	Sales (\$000)
821103	HENSON ELEMENTARY SCHOOL S AVERS AVE CHICAGO, IL 60623	40	\$0.
866107	CLAIR CHRISTIAN UNITED MTHDST W 14TH ST CHICAGO, IL 60623	3	\$0.
651303	CLAIR HOUSE S HARDING AVE CHICAGO, IL 60623	6	\$1,472.
866107	DELIVERANCE TEMPLE CHURCH S KOMENSKY AVE CHICAGO, IL 60623	2	\$0.
866107	ZION TEMPLE CHURCH OF GOD S PULASKI RD CHICAGO, IL 60623	3	\$0.
172101	BOB'S DECORATING SVC CORP S DRAKE AVE CHICAGO, IL 60623	2	\$328.
866110	NIGHT MINISTRY S AVERS AVE CHICAGO, IL 60623	4	\$0.
562105	BOSS CHIC'S BOUTIQUE S KOMENSKY AVE CHICAGO, IL 60623	2	\$322.
832218	MIRROR PROJECT S PULASKI RD CHICAGO, IL 60623	8	\$432.
179405	BETTER BOYS FOUNDATION S PULASKI RD CHICAGO, IL 60623	5	\$818.

Business Inventory (continued...)

SIC Code	Business Name	Employees	Sales (\$000)
804946	TRILOGY INC S PULASKI RD CHICAGO, IL 60623	4	\$241.
473101	ODYSSEY MEDICAL IRANSPORTATON W DOUGLAS BLVD CHICAGO, IL 60623	5	\$1,216.
78204	CLEAN CUT LANDSCAPING S HARDING AVE CHICAGO, IL 60623	6	\$712.
999977	MODISH NECESSITIES S SPRINGFIELD AVE CHICAGO, IL 60623	0	\$0.
541105	NISSA'S NANA PUDDING & MORE S SAINT LOUIS AVE CHICAGO, IL 60623	3	\$767.
152112	LAWNDALE CHRISTIAN DEVELOPMENT S PULASKI RD CHICAGO, IL 60623	2	\$668.
523110	TEXAS AUTO GLASS S PULASKI RD CHICAGO, IL 60623	2	\$661.
866107	CHURCH OF THE LIVING GOD INC S LAWNDALE AVE CHICAGO, IL 60623	2	\$0.
209903	OSAMA FOOD S CENTRAL PARK AVE CHICAGO, IL 60623	1	\$446.
602103	ATM S PULASKI RD CHICAGO, IL 60623	0	\$0.

SIC Code	Business Name	Employees	Sales (\$000)
866107	REDEEM TABERNACLE CHR OF GOD S PULASKI RD CHICAGO, IL 60623	3	\$0.
829929	YOUNG MEN'S EDUCATIONAL NTWRK PO BOX 23410 CHICAGO, IL 60623	6	\$0.
866107	LIVESTONE MB CHURCH S MILLARD AVE CHICAGO, IL 60623	3	\$0.
754201	SALS HAND CAR WASH S PULASKI RD CHICAGO, IL 60623	5	\$261.
203303	SUPREME JUICES S PULASKI RD CHICAGO, IL 60623	13	\$3,832.
291105	FOUR PARTNERS PETROLEUM S PULASKI RD CHICAGO, IL 60623	4	\$41,902.
839998	CHICAGO LAWNDALE AMACHI W OGDEN AVE CHICAGO, IL 60623	6	\$0.
866107	WORK OF HIS HANDS MINISTRIES S PULASKI RD CHICAGO, IL 60623	1	\$0.
821103	LAWNDALE ELEMENTARY CMNTY ACAD W DOUGLAS BLVD CHICAGO, IL 60623	100	\$0.
753801	A & AUTO REPAIR BODY SHOP W OGDEN AVE CHICAGO, IL 60623	4	\$495.

SIC Code	Business Name	Employees	Sales (\$000)
651303	SPAUDLING & TRUMBULL APTS S TRUMBULL AVE CHICAGO, IL 60623	2	\$491.
866107	NEW ST JOHN COMMUNITY BAPT CHR S MILLARD AVE CHICAGO, IL 60623	8	\$0.
842207	CHICAGO BOTANIC W OGDEN AVE CHICAGO, IL 60623	31	\$0.
861102	NEIGHBORHOOD HOUSING SVC W OGDEN AVE CHICAGO, IL 60623	6	\$0.
839998	OPERATION BROTHERHOOD W OGDEN AVE CHICAGO, IL 60623	1	\$0.
835102	CAROLE ROBERTSON CTR- LEARNING W OGDEN AVE CHICAGO, IL 60623	42	\$681.
209903	ROGELIOS METALS FINISHING W OGDEN AVE CHICAGO, IL 60623	18	\$8,028.
554101	WALLY WHEELS W ROOSEVELT RD CHICAGO, IL 60624	3	\$3,177.
152144	AM CABLING TECHNOLOGIES INC S SPRINGFIELD AVE CHICAGO, IL 60623	3	\$1,001.
581212	UNIQUE'S SOUL SIDES CATERING S TRUMBULL AVE CHICAGO, IL 60623	10	\$596.

Business Inventory (continued...)

SIC Code	Business Name	Employees	Sales (\$000)
554101	M & S GAS & FOOD W ROOSEVELT RD CHICAGO, IL 60624	5	\$5,295.
653118	DORRAZ REAL ESTATE S MILLARD AVE CHICAGO, IL 60623	5	\$662.
592102	PLATINUM FOOD & LIQUOR W ROOSEVELT RD CHICAGO, IL 60624	3	\$953.
481207	CRICKET WIRELESS AUTH RETAILER W ROOSEVELT RD CHICAGO, IL 60624	4	\$3,961.
541105	BIG DADDY FOOD INC W ROOSEVELT RD CHICAGO, IL 60624	3	\$767.
723102	ROSE NAILS W ROOSEVELT RD CHICAGO, IL 60624	3	\$102.
541105	MOUNTAIN 1 FOODS W ROOSEVELT RD CHICAGO, IL 60624	2	\$512.
602103	ATM W ROOSEVELT RD CHICAGO, IL 60624	0	\$0.
899999	SPI SERVICES W 16TH ST CHICAGO, IL 60623	3	\$419.
832222	YOUNG MENS EDUCATIONAL NETWORK S PULASKI RD CHICAGO, IL 60623	8	\$432.
541105	PLAZA FOOD & LIQUOR W OGDEN AVE CHICAGO, IL 60623	3	\$767.

SIC Code	Business Name	Employees	Sales (\$000)
541105	21ST FOOD MART S PULASKI RD CHICAGO, IL 60623	2	\$512.
809907	CHRISTIAN LAWNSDALE HEALTH CTR W OGDEN AVE CHICAGO, IL 60623	200	\$25,831.
874201	BARIC LAWNSDALE LLC S KARLOV AVE CHICAGO, IL 60623	8	\$1,648.
723106	HAIR DESIGN BY ROBERT & CO S PULASKI RD CHICAGO, IL 60623	3	\$102.
821103	CCA ACADEMY S PULASKI RD CHICAGO, IL 60623	50	\$0.
821103	COMMUNITY CHRISTIAN S PULASKI RD CHICAGO, IL 60623	13	\$0.
754201	CHICAGO FINEST CAR WASH WHEELS W OGDEN AVE CHICAGO, IL 60623	5	\$261.
751303	U-HAUL NEIGHBORHOOD DEALER W OGDEN AVE CHICAGO, IL 60623	2	\$1,775.
866107	GREATER WHITESTONE M B CHURCH W OGDEN AVE CHICAGO, IL 60623	1	\$0.
152112	LAWNSDALE CHRISTIAN DEVMNT CORP W OGDEN AVE CHICAGO, IL 60623	2	\$668.

SIC Code	Business Name	Employees	Sales (\$000)
753301	PAYLESS MUFFLERS W ROOSEVELT RD CHICAGO, IL 60624	3	\$318.
874201	PAYLESS MUFFLER & BRAKE W ROOSEVELT RD CHICAGO, IL 60624	4	\$824.
541105	FINE FAIR FOOD & LIQUORS W 16TH ST CHICAGO, IL 60623	6	\$1,534.
729101	INTEGRITY TAX SVC S HOMAN AVE CHICAGO, IL 60623	5	\$135.
866107	CHRISTIAN COMMUNITY DEVMNT W OGDEN AVE CHICAGO, IL 60623	8	\$0.
999977	C C D A FLOURISHING CMNTY W OGDEN AVE CHICAGO, IL 60623	0	\$0.
866110	LAWNSDALE COMMUNITY CHURCH W OGDEN AVE CHICAGO, IL 60623	20	\$0.
821103	CHICAGO WEST SIDE CHRISTIAN S PULASKI RD CHICAGO, IL 60623	15	\$0.
581208	CHECKERS DRIVE-IN RESTAURANT W ROOSEVELT RD CHICAGO, IL 60624	20	\$1,191.
581208	FAD FOODS LLC W ROOSEVELT RD CHICAGO, IL 60624	6	\$358.

Business Inventory (continued...)

SIC Code	Business Name	Employees	Sales (\$000)
866107	NEW MACEDONIA BAPTIST CHURCH S HOMAN AVE CHICAGO, IL 60623	5	\$0.
641112	STATE FARM INSURANCE W ROOSEVELT RD CHICAGO, IL 60624	2	\$359.
866107	UNITED LIBERTY BAPTIST CHURCH S PULASKI RD CHICAGO, IL 60623	3	\$0.
864102	VETERAN HOUSING ALLOWANCE W ROOSEVELT RD CHICAGO, IL 60624	4	\$0.
866107	EMMANUAL HEALING TEMPLE W ROOSEVELT RD CHICAGO, IL 60624	1	\$0.
641112	AMERICAN FAMILY INSURANCE W ROOSEVELT RD CHICAGO, IL 60624	2	\$359.
478977	HARPER TRANSPORTATION W CULLERTON ST CHICAGO, IL 60623	5	\$776.
539901	STORE 1053 INC S INDEPENDENCE BLVD CHICAGO, IL 60624	2	\$303.
829972	CONNECTIONS ADULT LEARNING CTR S MILLARD AVE CHICAGO, IL 60623	6	\$0.
821108	LEARNING CENTER S MILLARD AVE CHICAGO, IL 60623	6	\$0.

SIC Code	Business Name	Employees	Sales (\$000)
866107	MISSIONARY BAPTIST CHR SNSHN W ROOSEVELT RD CHICAGO, IL 60624	3	\$0.
872105	LAWNDALE CONSULTANTS S PULASKI RD CHICAGO, IL 60623	3	\$594.
152139	J & D SOLIS REMODELING LLC W ROOSEVELT RD CHICAGO, IL 60624	3	\$1,001.
731908	REHOBOTH DISTRIBUTORS W CULLERTON ST CHICAGO, IL 60623	10	\$2,747.
753801	BROWN'S AUTO REPAIR S INDEPENDENCE BLVD CHICAGO, IL 60624	1	\$124.
152144	BARUCH CONSTRUCTION CO W CERMAK RD CHICAGO, IL 60623	3	\$1,001.
912102	IL DEPARTMENT OF HUMAN SVC W OGDEN AVE CHICAGO, IL 60623	96	\$0.
478977	TYL TRANSPORTATION INC W CULLERTON ST CHICAGO, IL 60623	5	\$776.
751303	DREAM'S MARKET W ROOSEVELT RD CHICAGO, IL 60624	2	\$1,775.
473101	TRANSPORT LINK INC W OGDEN AVE CHICAGO, IL 60623	5	\$1,216.
999966	CHICAGO RECOVERING CMNTY CLTN S HOMAN AVE CHICAGO, IL 60623	10	\$0.

SIC Code	Business Name	Employees	Sales (\$000)
541105	SUNSHINE FOOD W ROOSEVELT RD CHICAGO, IL 60624	3	\$767.
866107	SHILOH APOSTOLIC DELIVERANCE W ROOSEVELT RD CHICAGO, IL 60624	2	\$0.
641112	JANET FORD AGENCY W CERMAK RD CHICAGO, IL 60623	2	\$359.
729101	INK TAX SERICES LLC W CERMAK RD CHICAGO, IL 60623	3	\$81.
581208	SUPER SUBMARINE W ROOSEVELT RD CHICAGO, IL 60624	2	\$120.
866107	CHRISTIAN COMMUNITY DEVMNT W OGDEN AVE CHICAGO, IL 60623	2	\$0.
653118	KING LEGACY LLP W OGDEN AVE CHICAGO, IL 60623	12	\$1,589.
832218	LAWNDALE CHRISTIAN DEVMNT CORP W CERMAK RD CHICAGO, IL 60623	4	\$216.
481207	ROOSEVELT WIRELESS W ROOSEVELT RD CHICAGO, IL 60624	2	\$1,981.
824301	DIGITAL DEVELOPMENT CORP S MILLARD AVE CHICAGO, IL 60623	5	\$521.

Business Inventory (continued...)

SIC Code	Business Name	Employees	Sales (\$000)
581222	LOU MALNATI'S PIZZERIA W OGDEN AVE CHICAGO, IL 60623	20	\$1,191.
821103	KIPP ASCEND PRIMARY S CHRISTIANA AVE CHICAGO, IL 60623	0	\$0.
821103	KIPP CHICAGO S CHRISTIANA AVE CHICAGO, IL 60623	13	\$0.
835101	BETTY'S DAYCARE W CERMAK RD CHICAGO, IL 60623	1	\$17.
832241	HOPE HOUSE OF CHICAGO W ROOSEVELT RD CHICAGO, IL 60624	9	\$486.
209903	LA GARITA DE SAN LUIS W ROOSEVELT RD CHICAGO, IL 60624	4	\$1,784.
651303	ROOSEVELT INDEPENDENCE S INDEPENDENCE BLVD CHICAGO, IL 60624	5	\$1,227.
899999	CDSSERVICES W ROOSEVELT RD CHICAGO, IL 60624	3	\$419.
581208	A G & RC BURRITOS INC S PULASKI RD CHICAGO, IL 60623	5	\$298.
729101	JACKSON HEWITT TAX SVC S PULASKI RD CHICAGO, IL 60623	3	\$81.
541105	ROOSEVELT FOOD MARKET W ROOSEVELT RD CHICAGO, IL 60624	3	\$767.

SIC Code	Business Name	Employees	Sales (\$000)
809913	ST ANTHONY AFFILIATE W ROOSEVELT RD CHICAGO, IL 60624	5	\$646.
591205	PRO MED PHARMACY W ROOSEVELT RD CHICAGO, IL 60624	3	\$735.
801101	FAMILY CARE PARTNERS W ROOSEVELT RD CHICAGO, IL 60624	12	\$2,496.
832222	CHICAGO YOUTH CTR W 13TH PL CHICAGO, IL 60623	11	\$593.
835101	ABC CHILD DEV HEAD START W 13TH PL CHICAGO, IL 60623	13	\$211.
832222	BLESSED SACRAMENT YOUTH CTR W CERMAK RD CHICAGO, IL 60623	5	\$270.
481207	FYNE CONNECTIONS INC W CERMAK RD CHICAGO, IL 60623	2	\$1,981.
581208	SUBWAY W CERMAK RD CHICAGO, IL 60623	8	\$477.
581208	CERMAK CORNER LLC W CERMAK RD CHICAGO, IL 60623	5	\$298.
581208	MADEA'S DOWN HOME COOKING S PULASKI RD CHICAGO, IL 60623	5	\$298.
729101	JACKSON HEWITT TAX SVC W CERMAK RD CHICAGO, IL 60623	4	\$108.

SIC Code	Business Name	Employees	Sales (\$000)
581208	CHICAGO WINGS S PULASKI RD CHICAGO, IL 60623	4	\$239.
602103	ATM S PULASKI RD CHICAGO, IL 60623	0	\$0.
723102	DESIGN NO 1 NAILS CORP W CERMAK RD CHICAGO, IL 60623	3	\$102.
602103	ATM W CERMAK RD CHICAGO, IL 60623	0	\$0.
866110	CITY-REFUGE MINISTRIES- CHICAGO S KEELER AVE CHICAGO, IL 60623	4	\$0.
829929	EDUCATIONAL SERVICES OF AMER S KEELER AVE CHICAGO, IL 60623	6	\$0.
866107	GRACE-GLORY TABERNACLE BAPT S PULASKI RD CHICAGO, IL 60623	3	\$0.
541103	ADAMS FOOD MART PLUS S HOMAN AVE CHICAGO, IL 60623	2	\$512.
602103	ATM S HOMAN AVE CHICAGO, IL 60623	0	\$0.
821103	NORTH LAWDALE COLLEGE PREP S CHRISTIANA AVE CHICAGO, IL 60623	41	\$0.

Business Inventory (continued...)

SIC Code	Business Name	Employees	Sales (\$000)
554101	WEST TOWN MOBIL W ROOSEVELT RD CHICAGO, IL 60624	3	\$3,177.
602103	ATM W ROOSEVELT RD CHICAGO, IL 60624	0	\$0.
581208	CHICAGO STEAK & LEMONADE W ROOSEVELT RD CHICAGO, IL 60624	9	\$536.
592102	ROTHSCHILD LIQUOR MARTS W ROOSEVELT RD CHICAGO, IL 60624	9	\$2,858.
602103	ATM W ROOSEVELT RD CHICAGO, IL 60624	0	\$0.
866107	FIRST BAPTIST INSTITUTIONAL W 18TH ST CHICAGO, IL 60623	4	\$0.
734201	CONCERNED PEST CONTROL W GRENSHAW ST CHICAGO, IL 60624	3	\$405.
835101	LESFINCHS LEARNING TREE DAY W 16TH ST CHICAGO, IL 60623	25	\$405.
753301	INTERSTATE AUTO S PULASKI RD CHICAGO, IL 60623	3	\$318.
723106	G G AFRICAN HAIR BRAIDING S PULASKI RD CHICAGO, IL 60624	2	\$68.
866107	WESTLAWN GOSPEL CHAPEL S SAINT LOUIS AVE CHICAGO, IL 60623	2	\$0.

SIC Code	Business Name	Employees	Sales (\$000)
821103	CROWN ELEMENTARY CMNTY ACD S SAINT LOUIS AVE CHICAGO, IL 60623	50	\$0.
472402	TLD LUXXE TRAVEL S INDEPENDENCE BLVD CHICAGO, IL 60624	3	\$651.
866107	KEDVALE NEW MT ZION BAPTIST S KEDVALE AVE CHICAGO, IL 60623	3	\$0.
571220	BEDDING EXPERTS HILLSIDE W ROOSEVELT RD CHICAGO, IL 60624	3	\$832.
599992	BEAUTY CENTER W ROOSEVELT RD CHICAGO, IL 60624	2	\$356.
651303	SANKOFA HOUSE W ROOSEVELT RD CHICAGO, IL 60624	5	\$1,227.
533101	FAMILY DOLLAR STORE W OGDEN AVE CHICAGO, IL 60623	5	\$758.
821103	HOWLAND CHARTER SCHOOL S SPAULDING AVE CHICAGO, IL 60623	25	\$0.
489999	FREE SPIRIT MEDIA S SPAULDING AVE CHICAGO, IL 60623	1	\$452.
553111	AUTOZONE W OGDEN AVE CHICAGO, IL 60623	7	\$1,178.
541103	OGDEN MINUTEMAN INC W OGDEN AVE CHICAGO, IL 60623	5	\$1,278.

SIC Code	Business Name	Employees	Sales (\$000)
602103	ATM W OGDEN AVE CHICAGO, IL 60623	0	\$0.
821103	LEGACY CHARTER SCHOOL W OGDEN AVE CHICAGO, IL 60623	30	\$0.
821103	ROSWELL B MASON ELEMENTARY SCH S KEELER AVE CHICAGO, IL 60623	287	\$0.
801101	HOLY CROSS MEDICAL CTR W ROOSEVELT RD CHICAGO, IL 60624	9	\$1,872.
581208	HOOK FISH & CHICKEN W ROOSEVELT RD CHICAGO, IL 60624	5	\$298.
721501	NEIGHBORHOOD LAUNDROMAT W ROOSEVELT RD CHICAGO, IL 60624	3	\$290.
581208	POPEYES LOUISIANA KITCHEN W ROOSEVELT RD CHICAGO, IL 60624	20	\$1,191.
721501	SPIN CYCLE W ROOSEVELT RD CHICAGO, IL 60624	3	\$290.
835101	SANDERSON HOME S KEELER AVE CHICAGO, IL 60623	7	\$114.
721501	WASHTUB S PULASKI RD CHICAGO, IL 60623	8	\$773.
581208	SUBWAY W ROOSEVELT RD CHICAGO, IL 60624	8	\$477.

Business Inventory (continued...)

SIC Code	Business Name	Employees	Sales (\$000)
581208	UMIYA BROTHERS INC W ROOSEVELT RD CHICAGO, IL 60624	5	\$298.
866107	THOMPSON HOPEWELL UPB W DOUGLAS BLVD CHICAGO, IL 60623	3	\$0.
546105	DUNKIN' W OGDEN AVE CHICAGO, IL 60623	12	\$728.
723102	QUEEN NAILS SALON W ROOSEVELT RD CHICAGO, IL 60624	3	\$102.
922104	CHICAGO POLICE DEPT W OGDEN AVE CHICAGO, IL 60623	300	\$0.
912104	CITY OF CHICAGO W OGDEN AVE CHICAGO, IL 60623	8	\$0.
591205	WALGREENS W ROOSEVELT RD CHICAGO, IL 60624	23	\$5,632.
602103	ATM W ROOSEVELT RD CHICAGO, IL 60624	0	\$0.
609910	WESTERN UNION AGENT LOCATION W ROOSEVELT RD CHICAGO, IL 60624	3	\$2,121.
821103	FRAZIER INTERNATIONAL MAGNET W GRENSHAW ST CHICAGO, IL 60624	50	\$0.
821103	C HUGHES ELEMENTARY SCHOOL W 15TH ST CHICAGO, IL 60623	40	\$0.

SIC Code	Business Name	Employees	Sales (\$000)
999966	BLACKMON BROCK & BROWN LLC W 21ST ST CHICAGO, IL 60623	10	\$0.
823106	FREDRICK DOUGLASS PUBC LIBRARY W 13TH ST CHICAGO, IL 60623	8	\$0.
999977	CHICAGO CITY W 13TH ST CHICAGO, IL 60623	0	\$0.
653108	EAST LAKE W ROOSEVELT RD CHICAGO, IL 60624	4	\$530.

Source: Esri Business Analyst 2017



Great Cities Institute

Great Cities Institute (MC 107)
College of Urban Planning and Public Affairs
University of Illinois at Chicago
412 South Peoria Street, Suite 400
Chicago, Illinois 60607-7067

312.996.8700
gcities@uic.edu
greatcities.uic.edu